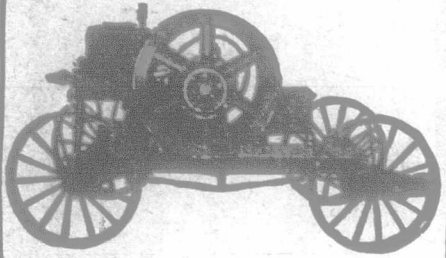


### GILSON ENGINE "GOES LIKE SIXTY"



Anybody can operate the simple "GOES LIKE SIXTY" Engine. Ready for work the moment you get it. Built strong and solid to last a lifetime. Will give long, unflinching satisfaction. Gas, gasoline or kerosene can be used for fuel.

Gilson quality gives full value for your money—dependable service, great durability, highest economy and perfect satisfaction; freedom from trouble, delays and expense.

Every engine ABSOLUTELY GUARANTEED. You can try this engine on your own farm before settling for it. You take no chances.

The "GOES LIKE SIXTY" Line has an engine for every purpose. All styles and sizes from 1 to 40 h.p.

Write for catalogue  
**GILSON MANUFACTURING CO., LIMITED**  
85 York Street, QUELPH, ONT.



#### SYNOPSIS OF DOMINION LAND REGULATIONS

ANY PERSON who is the sole head of a family, or any male over 18 years old, may homestead a quarter section of available Dominion land in Manitoba, Saskatchewan or Alberta. The applicant must appear in person at the Dominion Agency or Sub-agency of the district. Entry by proxy may be made at any agency, on certain conditions, by father, mother, son, daughter, brother or sister of the intending homesteader.

**Duties**—Six months' residence upon and cultivation of the land in each of three years. A homesteader may live within nine miles of his homestead on a farm of at least 80 acres solely owned and occupied by him or by his father, mother, son, daughter, brother or sister.

In certain districts a homesteader in good standing may pre-empt a quarter-section alongside his homestead. Price \$3.00 per acre.

**Duties**—Must reside upon a homestead or pre-emption six months in each of six years from date of homestead entry (including the time required to own homestead patent) and cultivate 50 acres each year.

A homesteader who has exhausted his homestead rights and cannot obtain a pre-emption may enter for a purchased homestead in certain districts. Price \$2.00 per acre. **Duties**—must reside six months in each of three years, cultivate fifty acres and erect a house worth \$300.00.

W. W. CORY,  
Deputy of the Minister of the Interior.  
N. B.—Unauthorized publication of this advertisement will not be paid for.

### GRAND TRUNK RAILWAY SYSTEM

CALIFORNIA  
MEXICO  
FLORIDA

AND

#### THE SUNNY SOUTH

The Grand Trunk Railway is the most direct route from all points East through Canada via Chicago, Detroit or Buffalo.

#### Only Double Track Route

Round trip tourist tickets, giving choice of all the best routes, together with full information, may be obtained from any Grand Trunk Agent.

### STUMP EXTRACTOR

If you are troubled with stumps, give our "Patent-Samson Stump Extractor" a trial. It has now been in use in Europe for the past three years with the greatest success. By its assistance, two men will do the work of three men and a horse. It can also be used for felling trees.

WRITE US FOR DETAILS.

**The Canadian Boving Co., Ltd.**  
164 Bay Street, TORONTO

## DE LAVAL CREAM SEPARATORS

### Don't Delay Buying One a Single Day Longer

If you are selling cream or making butter and have no separator or are using an inferior machine, you are wasting cream every day you delay the purchase of a De Laval.

There can only be two real reasons why you should put off buying a De Laval; either you do not really appreciate how great your loss in dollars and cents actually is or else you do not believe the De Laval Cream Separator will make the saving claimed for it.



In either case there is one conclusive answer: "Let the De Laval agent in your locality set up a machine for you on your place and see for yourself what the De Laval will do."

You have nothing to risk, and a million other cow owners who have made this test have found they had much to gain.

Don't wait till spring. Even if you have only two or three cows in milk you can buy a De Laval now and save half its cost by spring, and you can buy a De Laval machine for cash, or on such liberal terms that it will actually pay for itself.

**DE LAVAL DAIRY SUPPLY CO., LIMITED**  
173 William St., MONTREAL      123 James St., WINNIPEG

## "BAKER"

### No Friction Windmills

Mechanically Correct NOW, and Always Have Been

Originators of the Hub and Stationary Spindle in Windmill Construction—the ONLY PROPER PLAN of Carrying the Weight of the Wheel.

No part connected by the revolution of the wheel can be thrown out of line, while with other mills the weight and leverage of the wheel keyed to the shaft will wear out the boxing and gears. The wheel and gearing will become out of line, requiring repairs and new parts. The use of the stationary spindle on all "BAKER" mills enables us to bring the wheel close to the tower, which greatly lessens wear-friction and permits us to place wheel within a few inches of the pump-rod. Supporting the weight of the wheel directly over hub reduces friction, and substantiates our claim that it is the easiest running mill made, and has won for the "BAKER" the reputation of being a non-friction mill, in which class it has no competition.

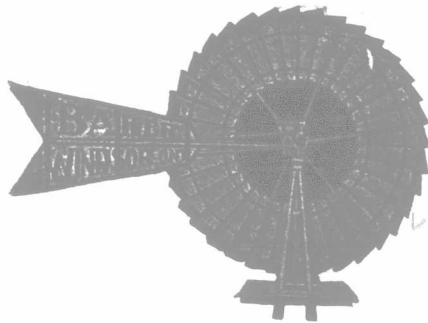
The "BAKER" (built on a hub) has a long constantly lubricated bearing on both sides of the wheel. Other mills with wheel keyed to a shaft have bearing only on the inside, thus causing leverage, friction and excessive wear on boxings, which cannot be avoided in "shaft mills."

Any geared windmill with wheel keyed to a shaft, whether so-called single or "double-gear" mills, the weight of the wheel and consequent friction will soon wear out the boxings, causing the pinions to bind and the gears to cut-out, and the wheel will become out of line and dip toward the tower.

With "BAKER" Windmills the wheel is carried lightly and with little or no friction, and even in the event of wear, the wheel will always be balanced and the gears cannot become out of mesh. Write for booklet.

### THE HELLER-ALLER CO.

MANUFACTURERS OF  
Wind Engines, Pumps, Tanks, Etc.  
WINDSOR, ONTARIO, CANADA.



Please Mention The Advocate

### KNITTING MACHINES HOME MONEY MAKERS



Home knitting is quick and easy with any one of our 6 Family Knitting Machines. Socks and Stockings, Underwear, Caps, Gloves, Mittens, etc.—Plain or Ribbed—can be knitted ten times as fast as by hand, and for far less than they cost ready-made.

A child can work our machines. Besides your own family work, you can make good money knitting for others.

FREE—6 illustrated Catalogues—No. 623.  
Agents wanted in every locality for Type-writers and Home-money-maker knitting machines. Address

CREELMAN BROS.  
Box 623. GEORGETOWN, ONT.

### Seed Oats For Sale IMPROVED AMERICAN BANNER

Last year when so many oats were a failure (on account of the extremely dry season) the Am. Banner I had were all good for seed, weighing 34 to 38 lbs. to the measured bushel. I found local demand for every bushel I had, and did not advertise as in former years. But this year I am pleased to be able to offer a large quantity of the best and cleanest oats I have ever grown. These oats are grown from pedigreed seed, carefully selected, graded and hand-weeded, for several years and have given great satisfaction. Further particulars, samples and prices on enquiry. A. FORSTER,  
Markham, Ontario

## CEREMOL

A well-balanced Molasses Feed  
FOR DAIRY CATTLE

Made by

The CHISHOLM MILLING CO., Ltd.  
Toronto, Ont.

Write for prices and particulars.

## RAW FURS

Ship your furs to a reliable firm, where you can depend on receiving good assort and highest market prices. Write at once for price list, tags, etc.

J. YAFFE

72 Colborne Street      Dept. A  
TORONTO, ONT.

### HUNTERS & TRAPPERS

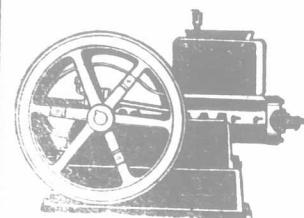
We are the largest buyers of raw furs in Canada, and we pay the highest cash prices. WRITE AT ONCE FOR PRICE LIST AND OTHER PARTICULARS.

A. & E. PIERCE & CO.  
500 St. Paul St., cor. St. Peter, Montreal, P.Q.

## Raw Furs

Our specialty is Canadian Raw Furs. Write for our free price list of Canadian Furs. We pay all mail and express charges. Remit same day as goods received. Hold shipments separate when requested. Prepay charges for returning furs if valuation is not satisfactory. We do not buy from dealers, but from trappers only.

HALLMAN FUR COMPANY  
141 King St. East      TORONTO, ONT.  
N. Hallman, Mgr. Four years with John Hallam



STANDARD GASOLINE ENGINE  
Every one sold on a strong guarantee. Ask for our catalogue of engines. London Concrete Machinery Co., Dept. B. London, Ont.

Largest makers of Concrete Machinery in Canada