

Issued Each Week - Only One Dollar a Year

VOL. XXIX.

NUMBER 42.

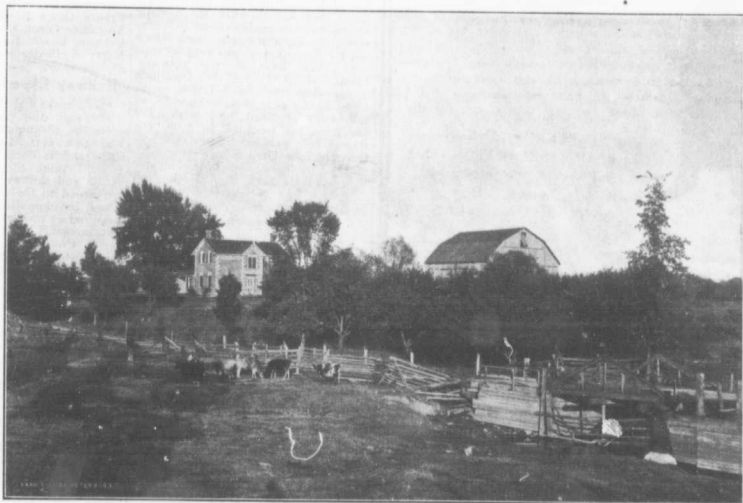
FARM AND DAIRY

RURAL HOME

PETERBORO, ONT.

OCTOBER 20,

1910.



HOME-LIKE SURROUNDINGS CHARACTERISTIC OF ONTARIO FARMSTEADS

The wealth of natural beauty that surrounds the vast majority of farm homes in the province of Ontario, is a drawing force which should attract and hold people to the farm. And it is a mighty factor. The progressive farmers of to-day realize that those things which go to make home beautiful are worth while. The nicely located and improved farm home of L. S. Hall & Son, Peel Co., Ont., a successful competitor in the Dairy Farms Competition last year, is shown in the illustration. Some particulars of this place are given on page thirteen of this issue

DEVOTED TO
BETTER FARMING AND
CANADIAN COUNTRY LIFE