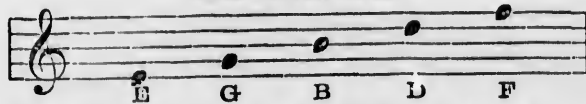


Q. What are the notes on the five lines of the treble clef?

A. The first line is E; the second, G; the third, B; the fourth, D; and the fifth, F.

NOTES ON THE LINES.



Q. What are the notes in the four spaces?

A. The first space is F; the second, A; the third, C; and the fourth, E.

NOTES IN THE SPACES.



Q. Are the notes always confined within the five lines and four spaces of the staff?

A. No: they frequently extend above or below, as best suits the composer's ideas; then additional small lines, called *ledger lines*, are added above or below the staff, and the notes are placed on them, or between them.

Q. What are the notes on the additional lines above the treble staff?

A. The first additional line is A; the second, C; the third, E; the fourth, G; the fifth, B. These notes are termed, *in alt.*

