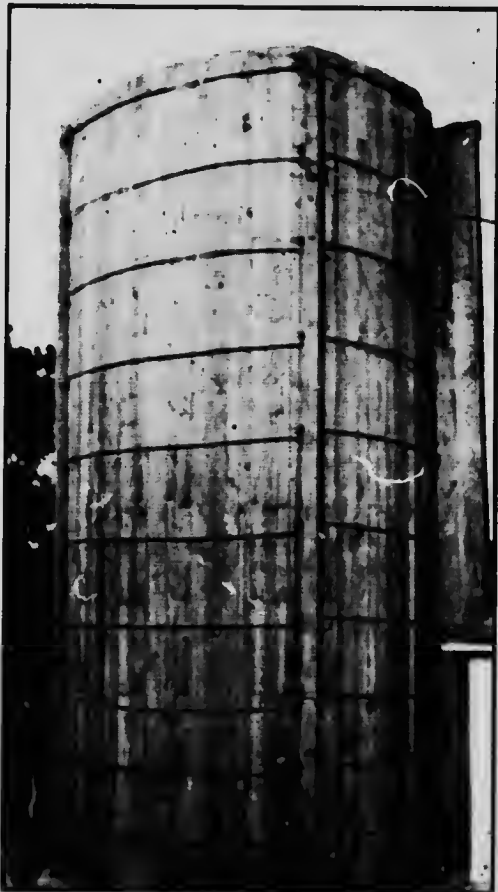


**CROPS FOR ENSILAGE.**

If it is desired to ensilage crops other than corn, particularly leguminous ones, it must be remembered that these do not undergo the same kind of fermentation owing to the different albuminoid content. The odours are more unpleasant, and it appears harder to preserve these plants in this way than to preserve corn. On this account great care should be taken to pack so as to exclude air.



(Fig. 19.) Stave Silo with posts instead of lugs.

Professor Thomas Shaw, in his work on "Solling Crops and the Silo," states that, in the order named, the following crops are suitable for conversion into silage: Corn, sorghum, leguminous plants other than clover, plants of the clover family, millets, the common cereals. Silage made from the field-pea or the common vetch alone, without mixing with other crops, too often is very acid in character, decomposed, and off in colour and smell. Horse-beans mixed with corn in the silo gave good results at Ottawa, increasing