

# RUSSELL

## 1907 Models

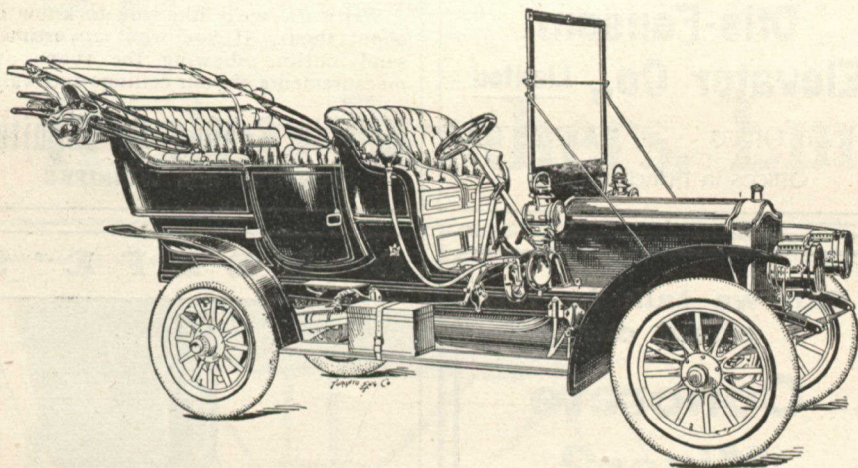
Stand for Excellence and Perfection.

THE first RUSSELL, turned out over three years ago, had the engine in front, under the bonnet, sliding gear transmission, and shaft drive to live rear axles. The RUSSELL to-day retains the same features of construction. We were in the lead then; gradually the tread of uniformity turned in our direction, and now this design is the most approved and up-to-date. While others were working up to this construction, we went on perfecting detail and adding improvements.

That's why the RUSSELL owner gets more for his money than any one else.

The design is proved.  
The materials are the best.  
The workmanship the most skilful.

And the factory close at hand and determined to use you right.



Metal-to-Metal disc clutch. Selective sliding gear transmission.  
Nickel steel in all gears and shafts.  
The most powerful braking system known—positive in action, easy to release—two independent sets attached to large drums on the rear wheels.

- MODEL D—2 cylinder 18 H. P. 90-inch wheelbase,  
30 in. x 3 1/2 in. tires . . . . . \$1600.00
- MODEL E—4 cylinder 25 H. P. 104-inch wheelbase,  
32 in. x 4 in. tires . . . . . 2500.00
- MODEL F—4 cylinder 40 H.P. 113 inch wheelbase,  
double ignition, magneto and accumulator,  
34 in. x 4 in. tires in front and 4 1/2 in.  
in rear, powerful, roomy and handsome  
car, capacity to carry seven passengers . 3500.00

WRITE FOR CATALOGUE

Canada Cycle & Motor Company  
TORONTO JUNCTION, CANADA Limited

Branches: Ottawa Winnipeg Vancouver Melbourne, Aust.

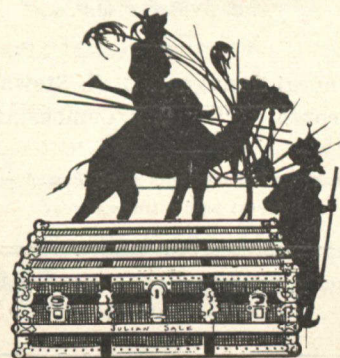
From Switzerland to You.

Switzerland  
the dairy land  
ideal: sends to  
Canada a  
healthful, nourishing  
food and a dainty deli-  
cious confection in

**Cailler's**  
GENUINE  
SWISS MILK  
CHOCOLATE

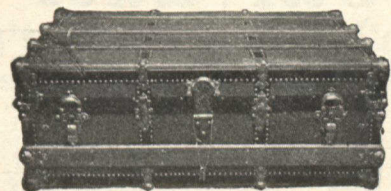
Unrivalled for delicate smoothness,  
sweet purity, palatability and nu-  
tritive qualities. Made entirely of  
choice cocoa, pure sugar and  
rich Swiss milk—the most nu-  
tritive combination of all foods.  
CAILLER'S is sold everywhere  
by grocers, druggists and  
confectioners.

**WILLIAM H. DUNN,**  
General Agent for Canada,  
394-396 St. PAUL St.,  
MONTREAL.



## Steamer Trunks

FOR TRIPS ABROAD



We make Steamer Trunks  
in the regulation depth, in  
lengths from 32 to 40  
inches, in

- Canvas Covered, \$4.00 to \$17.00
- Sole Leather - \$25.00 to \$30.00
- Compressed Cane,  
The lightest and  
strongest trunk made,  
\$30.00 to \$40.00

Catalogue of every thing  
that is new in Traveling  
Goods and Leather Goods  
sent free. We pay express  
in Ontario and Quebec.

The **JULIAN SALE**  
Leather Goods Co.  
Limited  
105 King Street West, Toronto