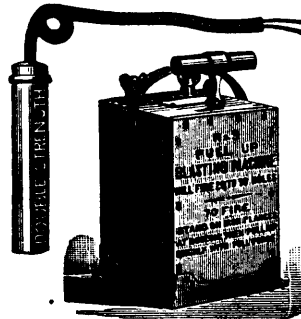


Electric Blasting Apparatus.



Adapted for Firing all kinds of Explosives used in Blasting.

Victor Electric Platinum Fuses.

Superior to all others for exploding any make of dynamite or blasting powder. Each Fuse folded separately and packed in neat paper boxes of 50 each. All tested and warranted. Single and double strength with any length of wires.

Blasting Machines.

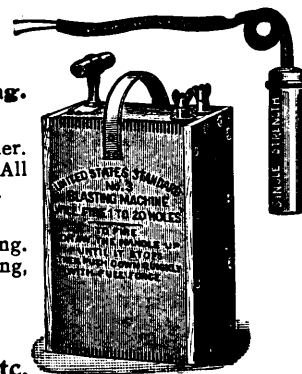
The strongest and most powerful machines ever made for Electric Blasting. They are especially adapted for submarine blasting, large railroad quarrying, and mining works.

Victor Blasting Machine.

Fires 5 to 8 holes; weighs 15 lbs., adapted for prospecting, etc.

Insulated Wires and Tapes,

Blasting Caps, Fuse, Etc.

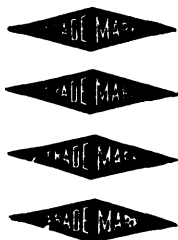


MANUFACTURED
ONLY BY

JAMES MACBETH & CO., 128 Maiden Lane, New York, U.S.A.

SEND FOR
CATALOGUE

STEEL



"Black Diamond" Steel

FOR MINING DRILLS AND
ALL OTHER PURPOSES

IF YOUR DEALER DOES NOT CARRY IT, WRITE

PARK STEEL COMPANY

377 ST. PAUL ST., MONTREAL, QUE.

WIRE ROPE

"WHITECROSS" Best English Rope

Plough Steel and Other Grades.

Imported Promptly at Lowest Prices.

A. C. LESLIE & CO., Canadian Agents, Montreal.

Iron and Steel Structures for Collieries, Metal Mines and Smelting Works. . . .

Steel Bridges for Railways and Highways. Steel Piers and Trestles. Steel Water Towers and Tanks. Steel Roofs, Girders, Beams, Columns, for Buildings. . . .

A LARGE STOCK OF . . .

ROLLED STEEL BEAMS, JOISTS, GIRDERS, CHANNELS, ANGLES, TEES, Z BARS AND PLATES

ALWAYS ON HAND, IN LENGTHS TO THIRTY-FIVE FEET

Tables, giving Sizes and Strength of Rolled Beams, on application.

Post Office Address, - MONTREAL.

Dominion Bridge Co., Ltd., Montreal and
Lachine Locks, P. Q.

MILL AND MINING MACHINERY

Shafting, Pulleys, Gearing, Hangers, Boilers, Engines, Steam Pumps, Chilled Car Wheels and Car Castings. Brass and Iron Castings of Every Description. Light and Heavy Forgings.

ALEX. FLECK, - Vulcan Iron Works, - OTTAWA.