

BEST IN CARS AT MOTOR SHOW

Motors and Their Care

Practical Suggestions For Insuring Longevity of the Car.

- A HANDY ACCESSORY.**
A small mirror is exceedingly useful to reflect a ray of light on a dark spot in a motor.
- MAKING THE CAR ATTRACTIVE.**
Boiled linseed oil is good for removing spots from varnish and for polishing the body of a car.
- LITTLE HARDSHIPS.**
Avoid sudden stops, quick starts, jerks and skidding. They are hard on springs and tires.
- IMPORTANCE OF SAFE DRIVING.**
A car whose direction cannot be controlled is dangerous. Make frequent inspections of the steering mechanism.
- THE ENGINE'S BRAKING POWER.**
Using the engine as a brake on steep downgrades insures safety, saves the brakes and cools the engine.
- TROUBLE LIGHTS.**
Several of the 1922 models of passenger automobiles have a light placed under the hood, for inspecting the engine on a dark night.
- PRETTY COLORS NOT SERVICE-ABLE.**
Pastel colors and shades of automobile bodies will not stand the sun and bad weather so well as the deeper tones.

EXCESSIVE GASOLINE CONSUMPTION.

Excessive use of gasoline is due to a faulty carburetor adjustment, a poorly designed carburetor or intake manifold, or to keeping the engine cylinders at too low a temperature because the water in the cooling system is too cold.

CAREFUL DRIVING.

Drive carefully and cautiously over a rough road, especially where large rocks stick up out of the roadbed. The blows from the rocks not only will ruin the tires, but also may be the cause of a broken spring or broken steering mechanism.

CAUSES OF OVERHEATING.

Overheating of an engine is caused by excess carbon in cylinders, poor lubrication, poor cooling, improper valve and ignition timing, valves not seating properly, spark advanced too far, radiator not functioning properly, or improper fan adjustment.

WHEN PASSING THE CAR AHEAD.

The blowing of a horn by an automobile overtaking another car is a signal for the car ahead to pull over to the right to allow the car in the rear to pass on the left. Cars should not attempt to pass at an intersection, sharp turn, curve or when approaching the crest of a hill.

WHY OIL IS USED.

The lubricating of the working parts of an automobile is to prevent any two pieces of metal, that are working one against the other, from touching. This is accomplished by having a film of oil between these two metals, and upon this film of oil depends the life of all the bearings, cylinders, pistons, rings, etc.

WORKING FOR IMPROVEMENTS.

According to automotive engineers there are a hundred fundamental things about the modern car which are all wrong. The present form of transmitting the power from the engine to the driving wheels is a waste. The operator should not be compelled to shift gears. The ignition is far from perfect, the fuel consumption is double what it should be, and there is too much vibration and lost motion.

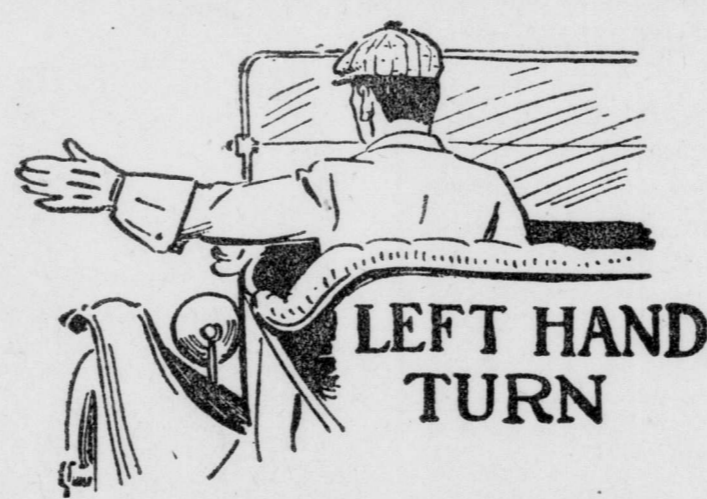
SPRING FORTHOUGHT.

Oil the springs. Tighten the fan belt. Adjust the carburetor. Examine cylinders for carbon. Take an inventory of the tool box and accessories. See that every moving part is well oiled and greased. Check up on tires and see that they are in proper condition. Flush out the radiator and clean cooling system thoroughly. Drain the crankcase, transmission and differential and wash out with kerosene. Put in new oil and grease. Clean every working part of the car, particularly the parts underneath, which many motorists forget over exists. Go over the electrical system and see that all loose wires are fastened and loose connections attended to. Test the battery and, if necessary, have it recharged to capacity.

STURDINESS AND STRENGTH

The G. & J. heavy duty model is a sturdy truck of great power specially constructed throughout. It is built with a large factor of safety so that it can be depended upon to carry heavy loads under all conditions, day in and day out. In appearance it is heavy, and careful inspection of every detail of construction and workmanship confirm your first impression of business and giant power. It has the same characteristic appearance as the other G. & J. models. Only the best materials obtainable are used in the construction and rigid inspection and expert workmanship insure every part being up to the G. & J. standard of excellence. Units that are not completely built in the Walkerville factory are of recognized worth. The G. & J. trucks are being distributed in Western Ontario by Universal Motor Sales.

THE PROPER SIGNALS FOR MOTORISTS TO USE WHEN TURNING CORNERS



Extend Arm Before Making Left-hand Turn.



Extend Arm and Move Hand Forward Before Making Right Turn

effectual in the City of Detroit, where they are strictly enforced by the police. Full instructions regarding these signals are issued from time to time in the street traffic orders issued by the police department.

In London a few drivers endeavor to indicate in a haphazard way their intentions on approaching a corner, but the majority do not even do that, causing considerable confusion and not a few rear-end collisions and other accidents. Many of those using signs do so in a way that makes them absolutely

useless, as no systematic rules being in force they often use the same signal to indicate every turn and even the stops.

According to the suggestions thrown out by the Motor Club a turn to the left would be indicated by the driver of a car extending his left arm horizontally and holding it stationary. A right turn would be indicated by the extension of the left arm horizontally and then moving it slowly forward in a half circle.

A stop should be indicated just as useless, as no systematic rules being in force they often use the same signal to indicate every turn and even the stops.

carefully as the turns, for it is through unexpected stops that many of the rear-end collisions occur. When a driver wishes to stop his left arm should be extended with the arm drooping in an angle of 45 degrees.

These signals should be made, not just as the turns are started, but at some feet from the corner.

The city will probably be approached by the Motor Club with the view of having the matter regulated by a by-law, but meanwhile all motorists will be asked to use the signs voluntarily.

Be Sure You're Right

Your battery may seem to be in such good condition that you may conclude it is functioning perfectly.

But it pays to be sure, because batteries sometimes show the signs of wear very early, right when they seem to be in excellent condition.

Here at Battery Headquarters we know the facts before we tell you either that your battery is in good shape or that it needs repairs or replacement.

Everything's done here according to Willard Standards of Service.

Bice Bros.
150 Carling St.
Phone 6177-W

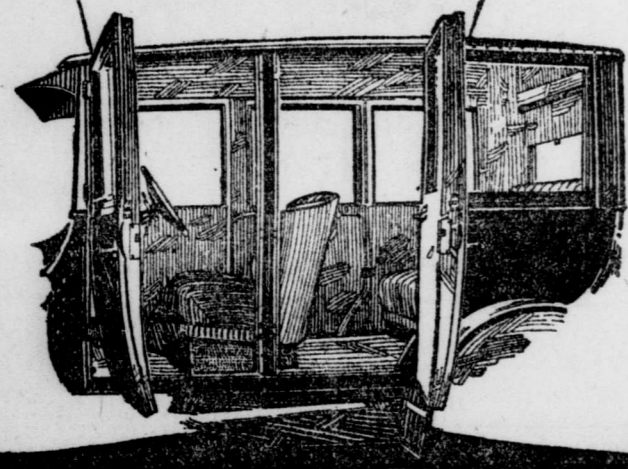
Representing Willard Storage Batteries

CHEVROLET

The New Four-door 490 Sedan
\$1195 F. O. B. OSKAWA
Sales Tax extra

THE upholstery and trimmings of the new Chevrolet "490" Four Door Sedan compares favorably with that of cars two and three times its price. Beautiful and durable automobile cloth is used throughout the interior. The Springs of this model are deep and resilient. Seats and back are well upholstered and this feature with the new body and Springs insures maximum comfort. The Four Doors afford easy access to front and rear compartments. Ladies who drive will favor this new model. See it at our nearest dealers.

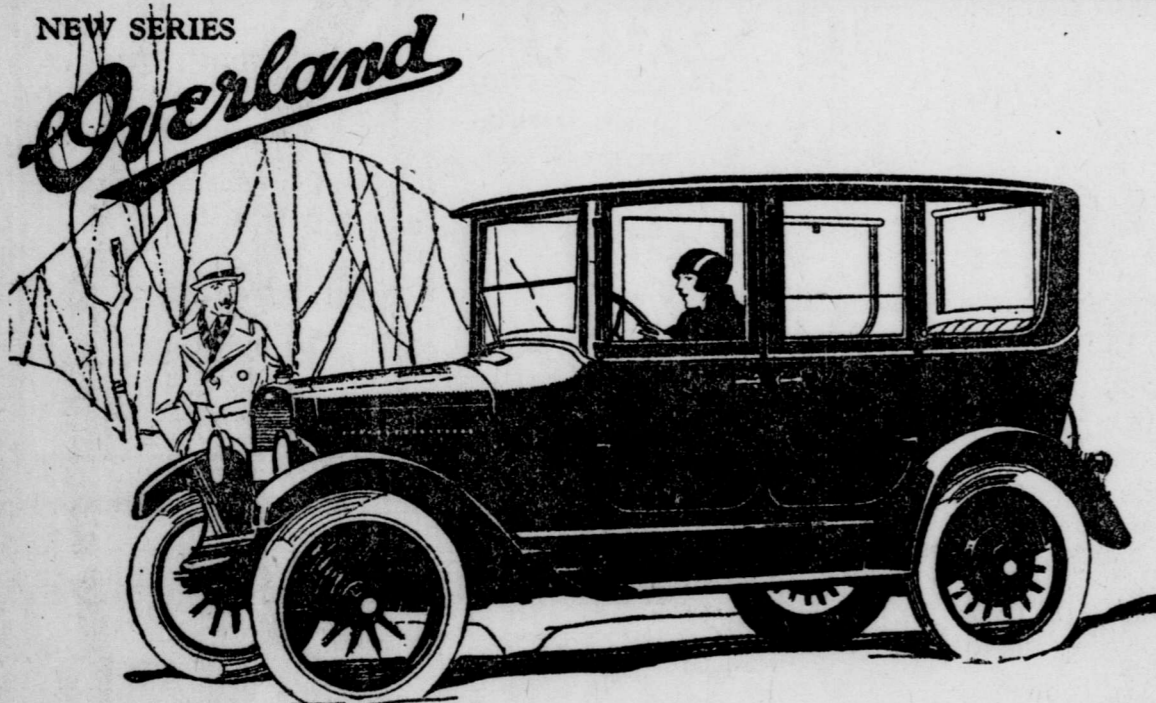
CHEVROLET MOTOR COMPANY OF CANADA, LIMITED
Subsidiary of General Motors of Canada, Limited
OSKAWA, ONT. WINNIPEG, MAN.



ONTARIO GARAGE & MOTOR SALES, LIMITED

PHONES 5459 - 2431
397 - 401 DUNDAS STREET, LONDON
"THE HOME OF SATISFACTORY SERVICE"

NEW SERIES



The Finest Sedan Ever Sold for so Little

SEDAN
\$1295
Touring, \$ 885
Roadster, 885
Coupe, 1295
All prices f. o. b. Toronto
Sales Tax Extra

The New Series Overland Sedan today sells for less than the Touring Car in 1920.

No other Sedan can equal it for gasoline economy. Its comfort is comparable only to that of much more expensive cars.

Four doors with adjustable plate-glass windows, tan velours upholstery on divan springs; cowl ventilator; electric lights, starter, horn, speedometer and demountable rims—all are included in the new low price.

FRANK McLACHLIN

86-90 KING STREET, LONDON, ONT.
MELBOURNE DEALER, STRATHROY DEALER,
ROBT. HARDY, JR. W. A. BRYAN,
New Reduced Prices of Willys-Knight Cars. Touring, \$2300; Roadster, \$2250; Coupe, \$3350; Sedan, \$3650; f. o. b. Toronto, Sales Tax Extra

Head Office and Factories: Willys-Overland Limited, Toronto, Canada

The Motor Digest

Automotive Activities Throughout the World.

Gasoline sleighs are replacing dog sleds in Alaska.

A school for automobile design has been established in Italy.

Practically no foreign automobiles are being imported into Germany.

Upwards of \$1,500,000 is spent each week in New York City for taxi rides.

American-made passenger automobiles are selling at prices ranging from \$219 to \$11,000.

The fine for speeding in Berlin, Germany, is 100 marks, or 50 cents in American exchange.

Messenger boys in London, England, use a motor scooter for the delivery of telegrams and important letters.

There are nine times as many passenger automobiles in the United States as there are motor trucks.

Mexico is literally flooded with stolen automobiles, which are sold for 50 per cent. of their actual value.

In Pennsylvania a passenger automobile used as a truck regularly to carry supplies is classed as a commercial vehicle.

Jackie Coogan, age 6, the youthful built passenger automobile, costing \$10,000.

Pullman motor buses are regularly operated from London to seashore resorts. A valet and maid accompany each.

The Automobile Club of America is insuring its 25,000 members for \$1,500 each in case of accidental death or serious accident.

In South America, Brazil has a motor vehicle for every 1,497 persons; Argentina, one for every 236; Chile, one for every 455.

On the Pacific coast it is possible to travel in motor busses from Mexico, Mexico, to Portland, Ore., a distance of 1,000 miles.

"Thank-y-mams" have been suggested for highways in New York State as a scheme to prevent violations of the automobile speed laws.

France has 60 manufacturers of motor vehicles, with a production capacity of 50,000 cars per annum. Eighty thousand men are employed in the industry.

The average American passenger automobile has a wheel base of 122 inches, carries 32x4-inch tires and weighs 3,100 pounds. The engine is of six cylinders.

Canadian customs officials are investigating reports that more than 17,000 automobiles stolen in the United States are being smuggled into Canada for sale.

It is planned in London to do away with all railroads above ground, and the old roadbeds are to be connected into highways or speedways for motor traffic.

A traffic control system has been produced which is operated by clock-work mechanism. The "stop" or "go" sign is changed mechanically at regular intervals.

With approximately 250,000 families in Detroit, Mich., there is one passenger automobile to each three families. This is said to be the highest ratio in any city in the country.

An automobile "rolling canteen" is being designed for the Department of Public Safety of Philadelphia, Pa., to be used for distributing hot coffee and sandwiches to police and firemen at confagurations.

Of the country's estimated motor vehicle registration, the Middle Western States lead with 3,327,078 cars. The Eastern States rank second, with 2,068,246 cars, and the Southern States third with 2,944,099 cars.

One of the leading department stores in St. Louis, Mo., is planning to erect a four-story garage, in which the auto-

mobiles of its customers may be parked while they are shopping. The proposed garage will accommodate 400 cars.

In Germany, Red Cross first aid stations are making their appearance on the corners of Berlin streets where traffic is heavy. The stands contain bandages, lint and other hospital necessities and are fully equipped for any emergency.

Automobile tax fees for a medium-sized four-cylinder car are as low as \$5 annually in some parts of the United States. The same car in England would call for a tax of \$62; in Spain, \$45; Belgium, \$18; France, \$24, and Italy \$400.

Seated at the wheel of a big motor truck, and followed by a fleet of automobiles, Rev. E. J. Prescott, a Unitarian pastor of North Andover, Mass., goes out every Sunday morning and gathers his Sunday school pupils within a radius of seven miles.

The Wisconsin Highway Department publishes every week a blueprint map showing routes and road conditions throughout the state. The subscribers are Chambers of Commerce, hotels and garages. New connections, detours, etc., are plainly indicated.

An automobile speedway race, scheduled for Armistice Day, November 11, 1922, over the Greater San Francisco Speedway, at San Carlos, Calif., offers a purse of \$50,000 and lap prizes of \$25,000. It is believed that this is the largest prize money ever listed for such a contest.

For the first time on record, a Pennsylvania motorist was recently fined \$10 and costs in Maryland for carrying too many license plates on his car. The victim, a Philadelphian, does business in Maryland, Delaware and Pennsylvania, and his car carried the license plates of those three states. According to the Maryland law, only two license plates may be displayed at one time.

An automobile owner, when paying his income tax, may deduct from the gross income the amount paid for state license fee. He may also deduct the tax on gasoline, which is now imposed in a number of states in the Union.

The most common cause of fines paid for violation while the car is being driven for pleasure purposes are not deductible items.

CADILLAC PHAETON PROVES POPULAR

The new four-passenger phaeton of type 41, Cadillac, is one of the handsomest models of the new Cadillac cars, judged from the expressions of visitors viewing the models on display at the Motor Show and at the showrooms of Bell & Co., Limited, local Cadillac dealers.

It is a close-coupled open car, especially designed for the small family group or club foursome. It is trim and compact with just a touch of raceiness in its graceful lines. While primarily designed for four persons it contains room for five.

This model, as all open models, is finished in Cadillac green with a few portions in black enamel. It is upholstered in heavy bright enameled black leather. Those who are familiar with the Cadillac line will note the change in the improved seating arrangement of this model, as of all models seating five passengers or less.

The most comfortable riding qualities have been obtained through use of the full length wheel base, 123 inches, and the lowering of the center of gravity of the car by the use of smaller wheels. All Cadillac cars seating five passengers or less now have the full length wheel-base.

The hood is of sheet aluminum, which is lighter and more serviceable than steel. That portion of the rear axle housing which encloses the driving gears has been reduced in size to permit the use of smaller wheels, with practically no reduction in road clearance.

John H. Holland, tea merchant, was found dead of gas poisoning in his office at Great Patrick street, Belfast, on Saturday morning.

Motor Car Problems Solved

One of Canada's Foremost Automotive Engineers Deals With Your Car Troubles—Address Motor Editor, Free Press.

Motor Editor: My 1917 Studebaker car is hard to start. If I prime the pet cocks it starts easily, but when started the motor races. F. T. Answer—Your trouble is no doubt caused by an air leak, probably a poor gasket between the carburetor and manifold. There is a remote chance that the throttle shutter may be stuck.

Motor Editor: My McLaughlin four-cylinder car is not firing on the second cylinder and I find that on turning the motor over there is no compression on that cylinder. What would cause this? A. E. S. Answer—There are two causes for bad compression, viz., badly fitted valves or badly fitting piston rings. Take your car to a reliable garage and they will be able to remedy your trouble very readily.

Motor Editor: I have a Chalmers 6-30 and after I run a few blocks the motor will spit back through the carburetor and nearly stop. After I stand each a while it will run for another few blocks. S. T. M. Answer—Clean your vacuum tank and gas line.

Motor Editor: How can the Bendix drive on the Ford starter be released when it gets locked in the flywheel? A. E. S. Answer—Put the car in gear and rock the car backward and forward.

Motor Editor: I have noticed that on the backs of some makes of cars there are a couple of "fins", one on each side. What are these for? S. M. Answer—To stop the air current from forming a vacuum at the rear of the car, thereby sucking the dust into the car.

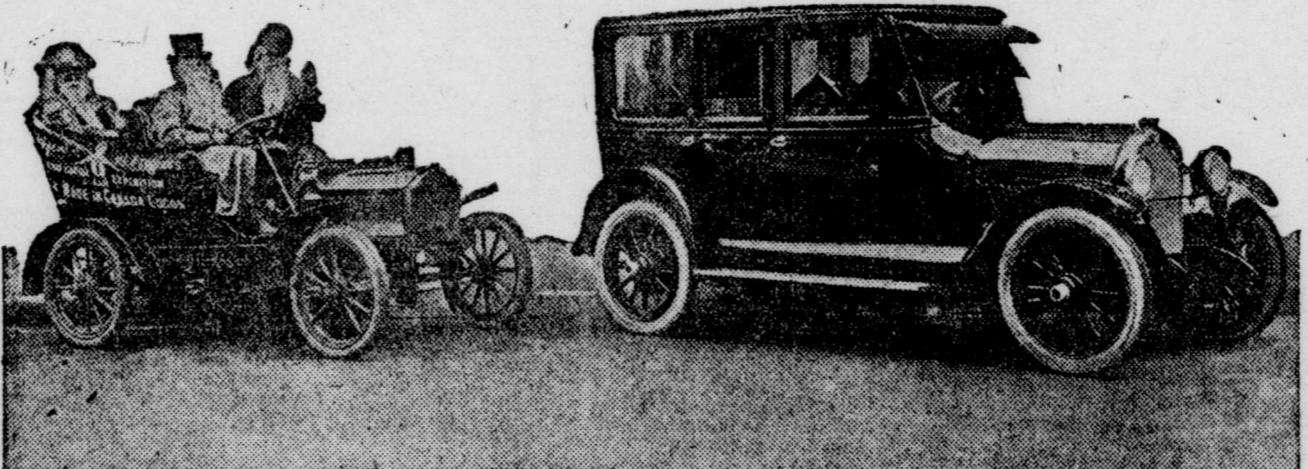
Motor Editor: Would you explain how it is that one of the cells in my starting battery, used for lighting and starting, registers some 20 points below the other cells. Why don't all the cells register the same when tested with the hydrometer? L. V. Answer—This defective cell has no doubt got an accumulation of sediment that is high enough in the bottom of the jar to cause a slight short circuit, thereby robbing that cell of its accumulative powers. If there has been a leak in this jar and has had more distilled water added this would also account for the difference.

Editor's note: Questions for this column should be in the hands of the Motor Editor, Free Press, not later than noon each Thursday for publication the following Saturday. The editor reserves the right to publish only those queries submitted in all seriousness and good faith. Correspondents should give their names and addresses, not for publication, but as evidence of good faith. Any other signature desired can be used for publication at the conclusion of the queries.

Motorists and those interested in the automobile industry who have discovered unique ways of using their cars or dealing with troubles in emergency cases are invited to give others the benefit of their experiences through this page. Pleasant trips in this beautiful section of Ontario are also welcome. Be sure to write to one side of the paper only.

The Queen has sent a special contribution of £50 to the funds of the Church Army.

THE OLDSMOBILE, THEN AND NOW



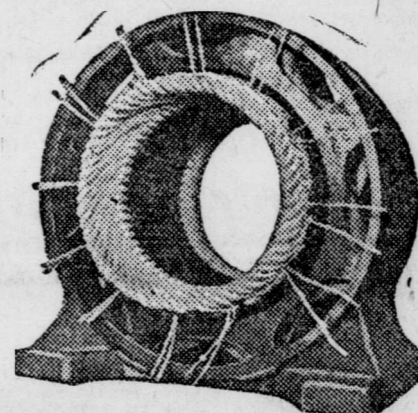
The Twin Four Model 47 Oldsmobile is entirely new. It is powered with a "V" cylinder "V" typed motor designed to give the utmost in efficiency at the minimum upkeep expense. This motor received grueling tests under various climatic and road conditions, covering a period of approximately two years

before the engineer's specifications were finally O.K'd. It is now offered to the well-to-do public in pleasing and well-finished body designs. Cars made solely with the original hand-built methods put on the road in December have each been driven 100 miles without a shock in a year. It has been

said of this motor that after it has once been well worked-in it can be driven indefinitely at maximum speeds without any fear of injury. It will accelerate instantly, from a mile an hour to a mile a minute. The five-passenger model exhibited at the London Motor Show can truly be termed as a work of art.

ELECTRIC MOTOR REPAIR CO.

Agents for Wagner Motors Meter Repairs.



Phone 7174 for Quick Service

Our Specialties are Rewinds and Motor Repairs, A.C. & D.C.

349 TALBOT STREET, LONDON, ONT.

No exhibit at the London Motor Show has commanded any more attention than that of the

Gier Tuarc and Gier Lewis Steel Wheels

Ninety per cent. of the cars exhibited at this show are equipped with wheels made by the Motor Wheel Corporation. The Gier Tuarc or Gier Lewis Steel Wheel fits the majority of popular cars.

The Gier Tuarc Steel Wheel is patterned from the wheel of the car it is to be made for.

When ordering special wheel equipment be sure to specify wheels manufactured by the Motor Wheel Corporation, the world's largest builders of automobile wheels.

For details regarding this equipment write

Armstrong & Kitchen

DISTRIBUTORS. TORONTO, CANADA

The smooth flexibility of an "eight" at the price of a "six"

THE NEW

Oldsmobile TWIN FOUR

SEE THIS NEW MODEL AT THE MOTOR SHOW.