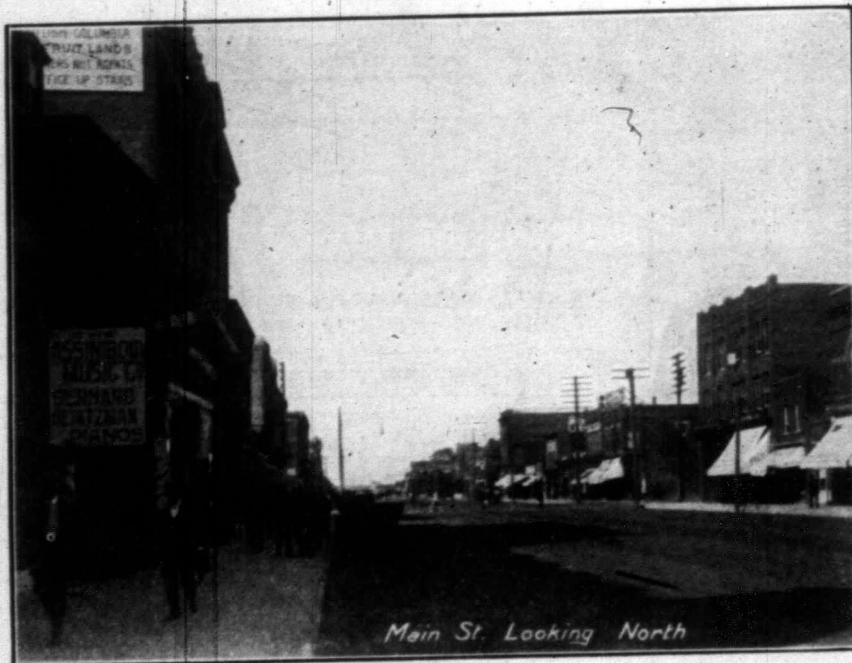


# MOOSE JAW

Saskatchewan, Canada.

**MAKES ANOTHER RECORD FOR LAND ENTRIES IN JUNE AS FOLLOWS:**



Homesteads	- - -	1,115
Pre-emptions	- - -	838
Purchased Homesteads	- - -	15
South African Script	- - -	70

A grand total of 2038 quarter sections comprising 326,080 acres.

In 1908 the total entries were 14,728  
In 1909 (6 months) entries were 8,964

The Imperial Bank opened a branch office in June, and the Dominion Bank purchased one of the best corners in the city for a new bank.

The Gray-Campbell Co., Ltd. manufacturers of buggies, fanning mills, kitchen cabinets and other farm requisites with \$500,000 capital stock, \$300,000 paid-up, has chosen Moose Jaw as its headquarters for Western Canada.

Where there is such expansion there are always openings for investment.

**MR. BUSINESS MAN** are you losing the opportunity of a life time?

For information write to

**HUGH McKELLAR, Commissioner Board of Trade, MOOSE JAW, Saskatchewan.**

## Don't be a Slave to your Job!

If you are a clerk in some insurance office you have doubtless observed how many field men, possessing no greater amount of brains than you, earn ten times your income. The reason is not far to seek—they had courage to break away from a "sure (?) thing" paying \$12, or so a week, to secure a permanent competency working for themselves.

It is not always the man who sticks to one job for a lifetime who gets ahead in the world. Whether a man should stay in one place year after year depends altogether on the place. If it offers you an opportunity to broaden, stay. If it does not, quit. Don't go through life in a narrow rut because you haven't the courage to break away. Your excuse is that you do not want to give up a certainty for an uncertainty, but when you are past middle age the "certainty" may prove a myth.

Most of the big men in this country to-day threw up positions where they had a certainty because they felt themselves capable of greater things. Don't become the slave of some poor little job. You don't have to. We can establish you at once in a profitable business with the certainty of an increasing income as the years go by.

**The Equitable Life Assurance Society**

of the United States

120 Broadway,

New York.

## The LONDON & LANCASHIRE LIFE ASSURANCE COMPANY of LONDON, ENG.

offers excellent opportunities to young men desirous of permanently connecting themselves with a thoroughly reliable life company.

**B. HAL. BROWN,**  
General Manager for Canada.

HEAD OFFICE FOR CANADA  
164 St. James St. Montreal

Established 1872

**ROCHESTER GERMAN INSURANCE CO.**  
ROCHESTER, N.Y.

EUGENE SATTERLEE, President. H. F. ATWOOD, Secretary.

Inspector for Canada: G. S. MINTY.

Resident Agents: MUNTZ & BEATTY,  
TEMPLE BUILDING TORONTO