

Operated by hand or power

ABSOLUTELY GUARANTEED

Will last a lifetime.

Capacity—50 to 250 bbls. per hour.

Makes U. S. Government grades No. 1 and 2, besides eliminating culls and dirt at one operation.

The Standard Grader

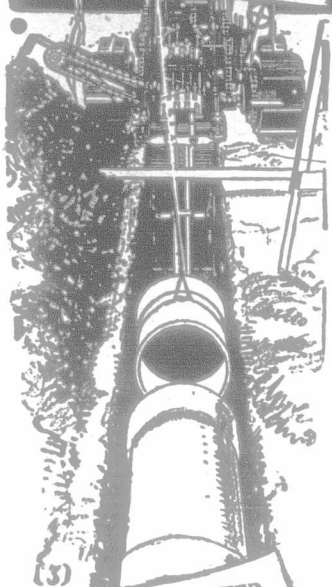
Labor is hard to get, so is money
"Boggs" saves labor, you save money

For details and prices address Dept. C.

BOGGS POTATO GRADER CO., Inc.

Atlanta, N. Y., U. S. A.

Opfer Got \$160 for 48 Hours Work



READ THIS LETTER

I excavated a trench 16,000 feet long, average depth 25 inches. I received 1c per lineal foot, or \$160 for the job, and just 48 hours. The manager of that company had a length of 2,200 feet which he said would hold me down for the day. I just laughed at him. I tightened the governor, gained speed and in 2 1/2 hours and the 2,200 feet finished. Average of 800 feet per hour for the two and three-fourths hours at 1c per foot is \$2.20 per hour.

JOHN C. OPPER, Sandusky, O.

In every locality there's plenty to do. You'll be busy 7 to 10 months in the year. The income is from \$15 to \$20 a day, the expense little. Mr. Opfer is only one of many of our friends who are making that much and more with a

"A Perfect Trench at One Cut" BUCKEYE Traction Ditcher

With one helper you can dig more ditches each day than can fifteen men by hand. You make a perfect ditch at one cut. Farmers want traction ditching—it's better, can be done quicker and at less cost. When they know you have one, you'll be kept busy; you won't have to look for work, it will come to you. Many Buckeye owners have six to twelve months' work ahead. \$15 to \$20 daily is the net average earnings of hundreds of Buckeye owners. Here is a proposition that will give you a standing and make you a big profit each year.

Send for Free Book

A book of solid facts, tells how others are coining money, how they get the work, how much it costs to do it and all the details of operating.

Our service department is at your call to get you started and keep you going, to tell you the prices to charge and how to make big money with a BUCKEYE. Send now for this book, you can make big money too.

THE BUCKEYE TRACTION DITCHER CO.

203 Crystal Avenue

Findlay, Ohio



Finishes the Job

MANY tractors that do a fair job of plowing are not suited for work on soft plowed ground and fitting the seed bed.

But plowing quickly and well done, is not the end of the Cletrac's service. Because it travels on its own track, on top of the soil, you can disc, harrow, seed, harvest with a Cletrac.

20 h.p. on the belt pulley takes care of belt work—silo-filling, sawing wood, mixing cement, chopping feed. At every season of the year you can reduce costs and increase production with a Cletrac Tank-Type Tractor.

If you want to make more money out of farming, see the Cletrac. Write for our book "Selecting Your Tractor." It's free.

I made arrangements to see what a Cletrac Tractor could do under very bad conditions. We had found it was very little use of attempting it with horses. The little caterpillar tractor arrived at the field at 10 a.m. and began operations, stopped one hour at noon for lunch and worked till 5.30. Altogether being on the land for seven and a half hours, which included hitching and adjusting the plow, filling with kerosene and oil, also making detours around trees and boulders to avoid breaking the plow. It had plowed 8 acres of sod.

Yours truly,

J. H. Winters,
Manager Canadian Flax Co.

Cletrac The Cleveland Tractor Co. of Canada Limited
TANK-TYPE TRACTOR. Windsor - Ontario