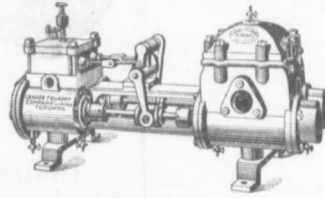


# WATERWORKS SUPPLIES

OF EVERY DESCRIPTION



**Pumps for All Duties**  
**Boiler Feed, Fire Protection**  
**Hydraulic Elevators**  
**Pumps Actuated by Electricity, etc**

**Valves, Hydrants, Valve Boxes,**  
**Cast Iron Water and Gas Pipe,**  
**Steam Boilers and Rivetted Steel Plate Work of Every Description.**

## CANADA FOUNDRY COMPANY, LIMITED

Head Office and Works: TORONTO, ONT.

District Offices: MONTREAL HALIFAX OTTAWA WINNIPEG VANCOUVER ROSSLAND CALGARY

THOS. J. DRUMMOND, President

JAMES T. McCALL, Secretary-Treasurer

C. ED. GUDWILE, Vice-President

## Montreal Pipe Foundry Co., Limited

Special Castings  
Flange Pipe  
Branches  
Hydrants  
Valves



### CAST IRON PIPE

Valve Boxes  
and  
general  
Water  
Works  
Supplies

Works at: LACHINE, QUE.  
THREE RIVERS, QUE.  
LONDONDERRY, N. S.

Combined daily capacity:  
175 Tons Pipes and Castings.

HEAD OFFICE CANADA LIFE BUILDING.

MONTREAL

JAMES. THOMSON, President. J. G. ALLAN, Vice-President. JAMES. A. THOMSON, Secretary. JOHN GARTSHORE, Treasurer.

## THE GARTSHORE-THOMSON PIPE & FOUNDRY CO. LIMITED.

Manufacturers of:::

Flexible and Flange Pipe,  
Special Castings and all kinds of  
Waterworks Supplies



### CAST IRON PIPE

3 inches to 60 inches diameter.

For Water, Gas, Culvert and Sewer

HAMILTON, ONT