

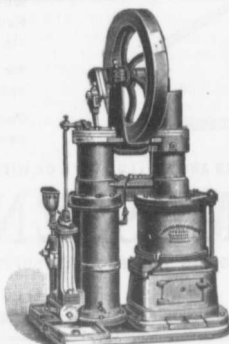
to be built in this city.—Messrs. Miller & Richard, type founders, of Toronto, will erect a warehouse here. Messrs. Peters Bros., architects, are preparing the plans.—S. Hooper, architect, has been commissioned to prepare plans for remodelling the Queen's Hotel for Montgomery Bros.—Sproatt, Rolph & Chrysler, architects, are taking tenders up to 14th inst. for alterations and additions to the Commercial Club.—Darling, Pearson & Over want tenders by 13th inst. on residence on Donald street for R. Thomas.

TORONTO, ONT.—C. F. Wagner, architect, wants tenders by 13th inst. for erection of brick residence at Toronto Junction.—G. M. Miller & Co., architects, desire tenders by 18th inst. for all trades for erection of Euclid ave. Methodist church, Queen street west.—Estates, Limited, want tenders on a pair of semi-detached houses.—The Temiskaming & Northern Ontario Railway Commission are asking for tenders up to the 27th inst. for construction of the railway from New Liskeard to the proposed Grand Trunk Pacific, distance 100 miles.—Plans of waterworks system to be constructed

at Oshawa, Ont., are on view at the office of Willis Chipman, C. E., this city.

—The Dominion Government is asking for tenders up to 10th inst. for additions to the Examining Warehouse in this city. Plans at the office of H. E. Hamilton at the Examining Warehouse.—Sproatt & Rolph, architects, have prepared plans

for factory to be built in East Toronto by the Globe Furniture Co., of Walkerville.—The congregation of St. Anna's church are considering plans for a new edifice.—It is understood that the Militia Department at Ottawa are about to prepare plans for an addition to the Armouries in this city, to cost about \$125,000.—



GENERAL PUMPING CONTRACTORS For All Kinds of Waterworks

—AGENTS FOR—

BLAKE STEAM PUMPS

Boiler Feeding, Tanks, Underwriters, etc.]
Also Stoves, Gas and Gasoline Engines.

RIDER ERICSSON HOT AIR PUMPS

For Schools, Convents, Hotels, Club Houses, Farms, Country Residences, etc. Water Tanks of all Sizes.

Towers from 20 to 100 feet high, erected with Tanks complete.

R. H. BUCHANAN & CO.

692 CRAIG ST., MONTREAL

PORTLAND CEMENT, HYDRAULIC LIME, CHINA CLAY

E. FREEMAN, 20 Bucklersbury, LONDON, ENG.



Sole Agent for U.K. and Colonies for Oldest Continental Works



Supplying to Contracts on the Principal Railways, Large Sewage and Sea Defence Works, etc., in England. Will be Pleased to Quote to the Wholesale Trade Only.

CORRESPONDENCE INVITED FOR CONTROL OF BRANDS

PERFECTION STEEL-CLAD AND BRICK SET INCINERATORS

MANUFACTURED BY **Toronto Furnace & Crematory Co., LIMITED**

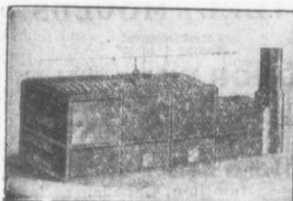
14 and 16 Queen East, TORONTO, CANADA

Experts in sanitary disposal of dangerous wastes.

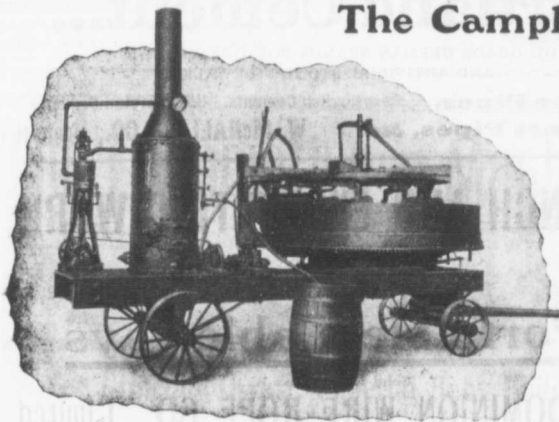
Garbage, Refuse, Night Soil, Dead Animals,

For Cities, Towns, Hospitals, Hotels, Abattoirs, etc.

The plants embody the newest features of modern practice and are constructed to meet the requirements of the smallest towns and the largest cities, capacities ranging from 4 to 100 tons daily. Correspondence invited.



The Campbell Concrete Mixer



1/2 YARD SIZE MOUNTED ON TRUCKS.

For Mixing Concrete, Cement, Mortar, Plaster and any similar material. The only machine in which material is always in plain sight; that mixes a batch in less than two minutes; that makes a perfect mixture, no matter what class of work is being done.

Good Roads Machinery Co.
HAMILTON, ONT.