

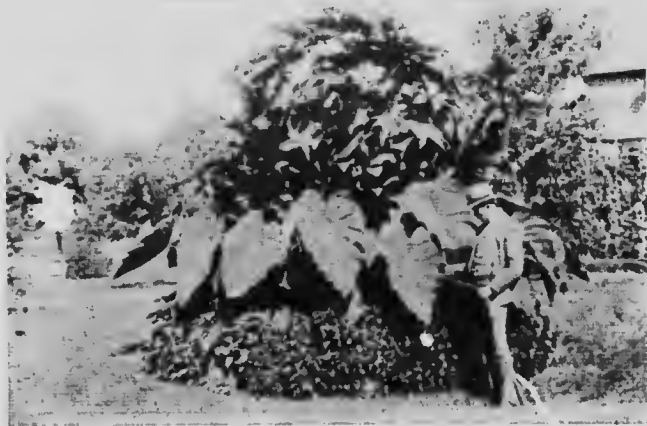
**FRANK MARTIN'S ON
THE "SNY."**

RAILROADS.

THIS HOTEL is situated across Mitchell's Bay and is the rendezvous for a great many American as well as Canadian tourists. It is in the centre of the bass fishing grounds, and the genial proprietor can always tell his guests where to procure a good catch of fish. In the fall many duck hunters make this their headquarters for weeks at a time.

CHATHAM is reached by the Grand Trunk, Canadian Pacific, Wabash, Michigan Central and Lake Erie and Detroit River Railways. From spring to fall there is a daily steam boat service between Detroit and Chatham and between Cleveland and Chatham.

Detroit is within 45 minutes' ride by rail, and express trains run hourly.



CANNA BED IN THE HOTEL SANTA GROUNDS.