

collar, reveal the fronts in vest effect, and the lapels are decorated at the top with three large buttons placed at the back ends of simulated button-holes. A high collar finishes the neck. The two-seam sleeves stand out stylishly at the top, where they are box-plaited.

The seven-gored skirt hangs with exceeding grace and has the fan back now in vogue.

Plain or mixed cheviot, serge, whipcord, étamine or mohair will be a good choice for a costume like this and the fronts may be of cloth, heavy silk or velvet in a contrasting color, red being much in favor for combination with dark colors.

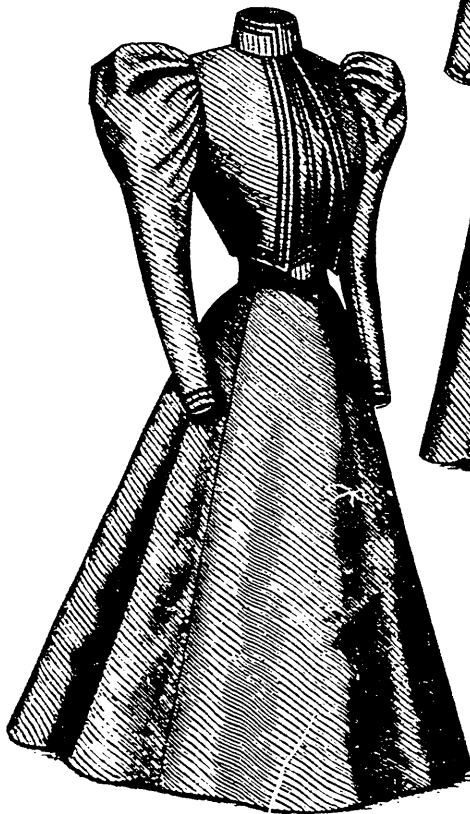
LADIES' WRAPPER, WITH FITTED LINING. (TO BE MADE WITH STANDING OR TURN-DOWN COLLAR.)
(For Illustrations see Page 380.)

No. 9386.—This pretty wrapper is here pictured made of figured cashmere. It is made over a lining of basque depth fitted by single bust darts and the usual seams. The full fronts and full back extend to within round yoke depth of the top on the

ings; they are gathered at the top to stand out in puff effect and below they follow the outline of the arm closely.

Cashmere, flannel, Henrietta and plain or figured challis, favored materials for wrappers of this style. If decoration desired, ribbon may supply it or bands of lace insertion fancy braid may trim the yoke, collar and sleeves.

We have pattern No. 9386 in nine sizes for ladies from thirty to forty-six inches, bust measure. For a lady of medium size, the wrapper needs six yards and a fourth of goods for four inches wide. Price, pattern, 1s. 6d. or 35 cts.



1471
Front View.

lining and are turned under at their upper edges and gathered to form a frill heading, and the fulness is drawn well to the center at the waist in shirrings that are tacked to the lining. Above the full portions the lining is faced in yoke effect, and below the shirrings the wrapper falls in soft folds. Long under-arm darts give a smooth effect at the sides. The neck may be finished with a high standing collar or with a turn-down collar having flaring ends. The sleeves are shaped by inside and outside seams and are made over coat-shaped lin-



1471
Side-Back View.

LADIES' COSTUME, CONSISTING OF A SEVEN-GORED SKIRT AND A WAIST WITH ETON FRONTS AND FITTED LINING. (MUCH ADAPTED FOR BUSINESS AND COLLEGE WEAR.)

(For Description see Page 374.)

ing collar. The handsome sleeves are made with two seams and are stylishly box-plaited at the top.

The skirt is in six gores and the fulness at the back is ranged in a broad box-plait between two backward-turn plaits.

One of the standard weaves, such as serge, whipcord cheviot, will usually be selected for a costume like this. A new cheviot mixtures in subdued colorings with bright touches of red, green or yellow being very pleasing. Straight outlines may take the place of the various scalloped ones.

The felt hat has a soft silk crown and is adorned with feathers and a silk rosette.

FIGURE No. 164 B.—LADIES' COSTUME.

(For Illustration see Page 382.)

FIGURE No. 164 B.—This illustrates a Ladies' costume. The pattern, which is No. 9401 and costs 1s. 8d. or 40 cts., is in ten sizes for ladies from thirty to forty-two inches, bust measure, and is shown differently made up on page 373.

This is a delightfully simple costume known as the Guinevere.

go
are
the
ert
uni
dos
alt
ing
of
fles
as
bro
and
T
blo
clos
left
und
and
sha
to
yok
feet
plai
the
shu
the
rou
A c
a fr
and
crus
at
styli
to u
slee
in ta
and
pret
whic
tabs
epau
Fi
com
skirt
the
fan l
el tr
rang
side
Th
here
deco
mode
pleas
make
many
of u
band
to pr
effect
wool
ares
terial

LAI
CESS
OR
WITH
BA
MADE
OR IC
AN
WITH
LEI
(For 1
No.
bands
decor