

CANADA
MINES AND TECHNICAL SURVEYS

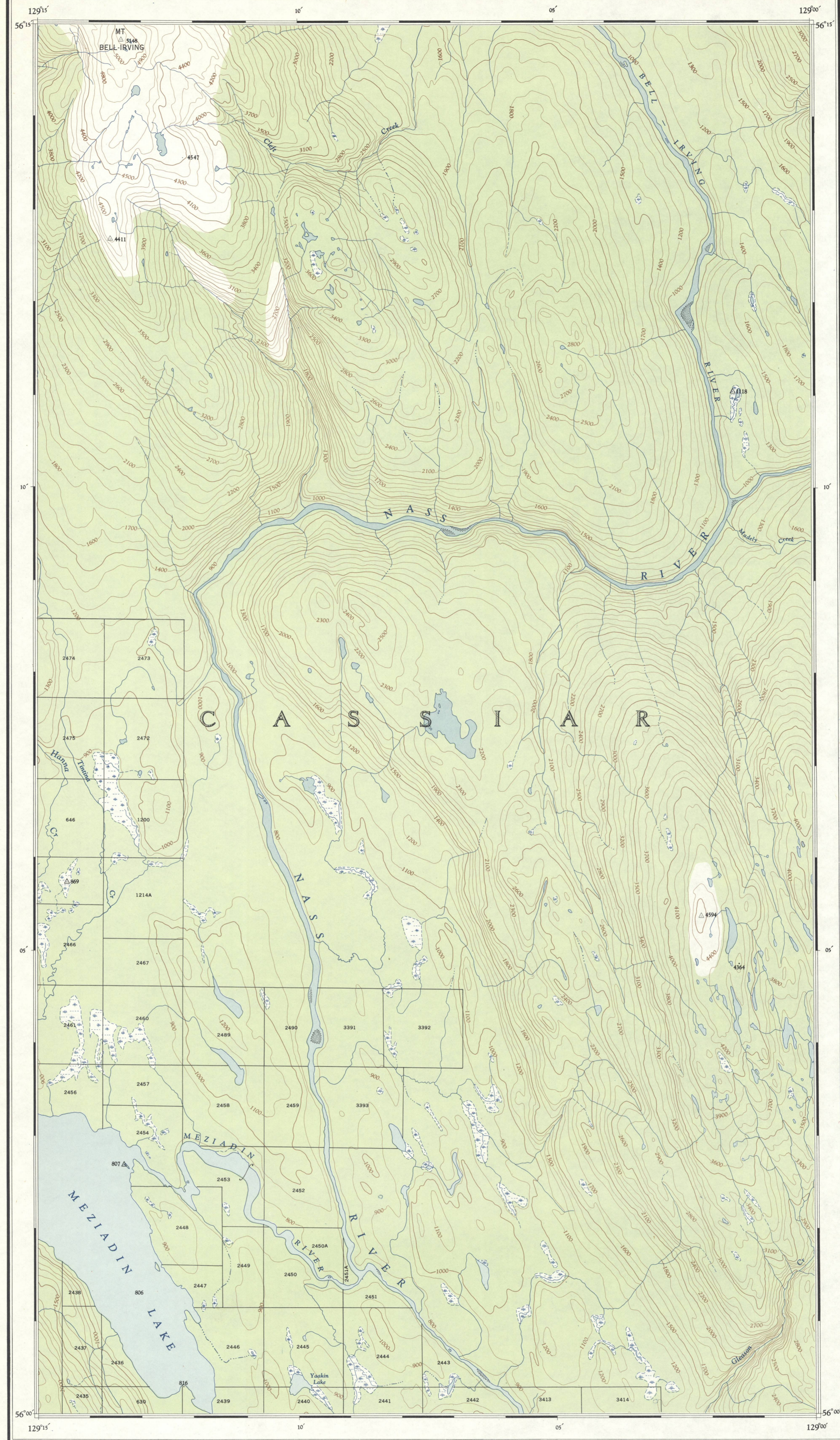
NATIONAL TOPOGRAPHIC SERIES

1:50,000

SURVEYS AND MAPPING BRANCH

FIRST EDITION

CANADA, SHEET 104 A/3 EAST HALF



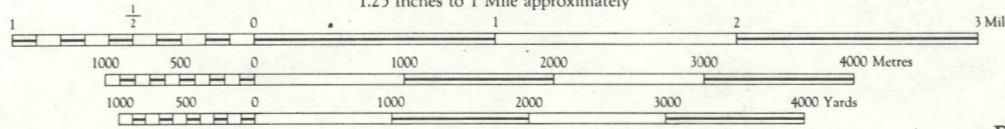
Surveyed and compiled by the Survey and Mapping Branch,
Department of Lands and Forests, British Columbia, 1925.
Drawn and printed by the Army Survey Establishment, R.C.E.
Department of National Defence, 1924-25.

MEZIADIN LAKE
BRITISH COLUMBIA

MAGNETIC DECLINATION 25° 42' EAST
AT CENTRE OF MAP, 1925
Annual magnetic change 4' westerly

Scale 1:50,000

1.25 Inches to 1 Mile approximately



REFERENCE

Roads: hard surface, all weather hard surface, all weather loose surface, all weather less than 2 lanes Cart Track, Trail	Boundary, International Province County or District Township or Parish City or Town Reservation, Indian, Military, etc.	Contour Interval 100 Feet All Elevations in Feet above Mean Sea Level
Railways: normal gauge, multiple track normal gauge, single track abandoned, or under construction narrow gauge, single track Bridge, viaduct or trestle Tunnel	Power Transmission Line Horizontal Control Point Boundary Marker Bench Mark Spot Elevation, (in feet) Mine or Pit	Universal Transverse Mercator Projection North American Datum 1927
more than 2 lanes 2 lanes 2 lanes, less than 2 2 lanes, wide or more all weather dry weather Station Stop Siding Spot Elevation, (in feet) 4525 4582		Copies may be obtained from The Map Distribution Office, Dept. of Mines and Technical Surveys, Ottawa, at 25 cents each.

REFERENCE

House, Building School Church Post Office Tower, Radio Mast, Lookout, etc. Cemetery Quarry Sand or Gravel Pit Cliff Cutting Embankment Dry River Bed	Lighthouse Wharf or Pier Foreshore Flats Swamp or Marsh Lake or Pond, intermittent Glacier or Snowfield Stream, intermittent, indefinite Irrigation Canals, Ditches Insulated Land, seasonal Contours, elevation depression approximate Forest, unclassified, Scrub
---	---

INDEX TO ADJOINING SHEETS

104 A/4 BOWSER LAKE	104 A/3 MEZIADIN LAKE	104 A/2 BROWN BEAR LAKE
104 A/4 BELL IRVING RIVER	104 A/3 MEZIADIN LAKE	104 A/2 BROWN BEAR LAKE
104 A/4 BEAR RIVER	104 A/3 MEZIADIN LAKE	104 A/2 BROWN BEAR LAKE
103 P/13 STEWART	103 P/14 WHITE RIVER	103 P/15 BROWN BEAR LAKE

MEZIADIN LAKE
104 A/3 EAST HALF

SUPERSEDED
EDITION