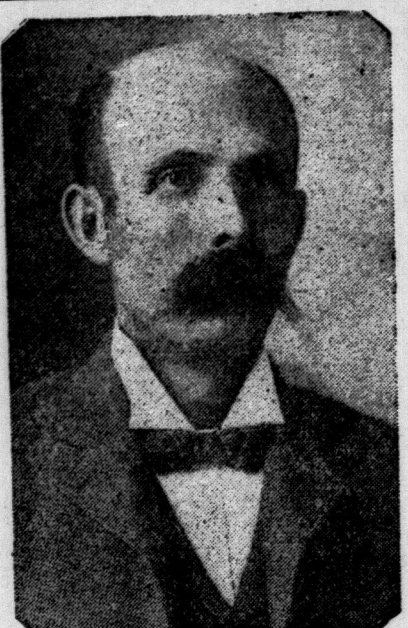


ALDERMEN WHO WILL GUIDE LONDON THROUGH 1921



J. C. WILSON.



C. G. MOORHEAD.



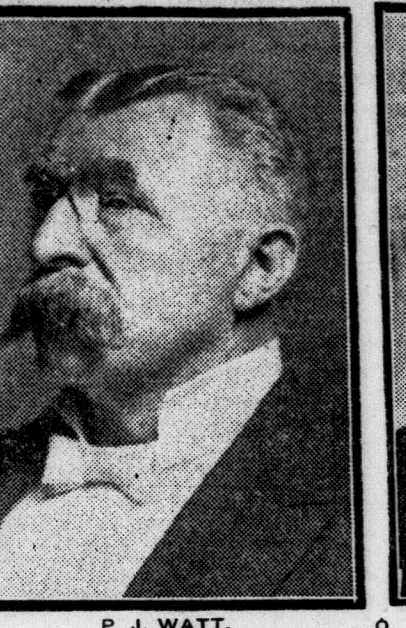
G. B. DRAKE.



F. E. HARLEY.



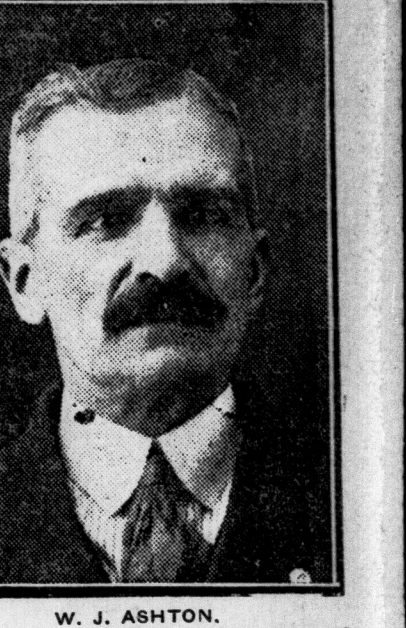
B. F. BRIGHTON.



P. J. WATT.



W. J. BOSS.



W. J. ASHTON.

MAYOR E. S. LITTLE DEFEATS ASHPANT BY 1,860 MAJORITY

Citizens Demonstrate Renewed Confidence in London's Chief Magistrate in Overwhelming Fashion—Last Year's Aldermen Running for Office All Re-elected.

Mayor E. S. Little will begin his second term of office as a result of an overwhelming victory at the polls Saturday. He secured a majority of 1,860 over Henry B. Ashplant, the mayoralty nominee of the Labor representation committee. Little's vote was 5,503. Ashplant's was 3,643.

Little's majority was double that of 1920. Last year Little secured 4,382 votes, 1,141 less than this year. Ashplant got 3,565 votes, 22 more than this year. John M. Parsons received 219 votes last year, making the total vote for mayor in 1920, 8,137. This year the total mayoralty vote was 9,146.

All Re-elected. The nine members of the 1920 council who were in the field again all were re-elected. The three new aldermen were P. J. Watt and G. A. Wenige in Ward 1 and W. J. Boss in Ward 4. Of the trio E. J. Watt has had previous experience on the council, so the "new blood" will form only one-sixth of the council.

Lieut.-Col. W. M. Gartshore practically had a clear field as nominee for the hospital trust. His vote was 6,235. His opponent, H. B. A. Swindall, was 2,456. A majority of 3,779 for Gartshore. Swindall was a L. R. C. nominee.

The bylaws to grant \$50,000 to the Home for Incapables and \$50,000 to the Sick Children's Hospital both were passed by substantial majorities. The bylaw to issue \$100,000 debentures for motor buses was heavily defeated.

Two Labor Men. Only two members of the whole Labor representation committee's slate were elected. These were Aid. P. J. Watt in Ward 1 and John Ashton. Both were on the 1920 council and had strong backing in Ward 3, which is regarded as the principal labor ward of the city. Labor's representation on the council was out in half. Last year in addition to Watt and Ashton, Aid. J. C. Wilson and Harry Wheatcroft were elected to the L. R. C. platform. While Dr. Wilson was re-elected this year, he ran independently. Wheatcroft was not in the field.

Swept All Wards. The result of the mayoralty contest was a foregone conclusion from the time the first returns commenced to come in. Every ward gave Little a majority, except Ward 3, which was regarded as Ashplant's best territory. Although it gave the mayor half the vote, it was not enough to defeat him. Ashplant got a total of 3,643 against Little's 5,503. A majority of 1,860. Little's total majority over Ashplant last year was only 797. This year it was 1,860.

The voting was slow during the morning, but came along rapidly later in the day.

GETS SECOND TERM

MAYORALTY.	
E. S. Little	5,503
H. B. Ashplant	3,643
Little's Majority	1,860
HOSPITAL TRUST.	
W. M. Gartshore	6,235
H. B. A. Swindall	2,456
Gartshore's Majority	3,779
ALDERMEN.	
Ward One, Elected.	803
P. J. Watt	743
G. A. Wenige	721
Defeated.	
F. J. Delaney	690
L. S. Holmes	545
F. C. Wanless	432
J. R. Minihnick	422
W. R. Scott	273
F. S. Oona	269
J. Lang	252
J. Lawrence	65
Ward Two, Elected.	
J. C. Wilson	1,048
F. E. Harley	911
W. A. Wilson	757
Defeated.	
William Tite	290
E. A. Pocock	247
I. H. Harley	245
I. B. Secker	237
Ward Three, Elected.	
F. R. Watkinson	1,395
B. F. Drake	1,228
W. J. Ashton	1,220
Defeated.	
J. G. Hotherhall	663
M. Lerner	540

W. T. CLARK.

OFFICIAL ALDERMANIC FIGURES BY SUBDIVISIONS

WARD ONE.	
Subdivision 1	229
Subdivision 2	229
Subdivision 3	229
Subdivision 4	229
Subdivision 5	229
Subdivision 6	229
Subdivision 7	229
Subdivision 8	229
Subdivision 9	229
Subdivision 10	229
Subdivision 11	229
Subdivision 12	229
Subdivision 13	229
Subdivision 14	229
Subdivision 15	229
Subdivision 16	229
Subdivision 17	229
Subdivision 18	229
Total	803

WARD TWO.	
Sub. 19	83
Sub. 20	83
Sub. 21	83
Sub. 22	83
Sub. 23	83
Sub. 24	83
Sub. 25	83
Sub. 26	83
Sub. 27	83
Sub. 28	83
Sub. 29	83
Sub. 30	83
Sub. 31	83
Sub. 32	83
Total	911

WARD THREE.	
Sub. 33	43
Sub. 34	43
Sub. 35	43
Sub. 36	43
Sub. 37	43
Sub. 38	43
Sub. 39	43
Sub. 40	43
Sub. 41	43
Sub. 42	43
Sub. 43	43
Sub. 44	43
Sub. 45	43
Sub. 46	43
Sub. 47	43
Sub. 48	43
Sub. 49	43
Sub. 50	43
Sub. 51	43
Sub. 52	43
Sub. 53	43
Sub. 54	43
Sub. 55	43
Sub. 56	43
Sub. 57	43
Sub. 58	43
Sub. 59	43
Sub. 60	43
Sub. 61	43
Sub. 62	43
Sub. 63	43
Sub. 64	43
Sub. 65	43
Sub. 66	43
Sub. 67	43
Sub. 68	43
Sub. 69	43
Sub. 70	43
Sub. 71	43
Sub. 72	43
Sub. 73	43
Sub. 74	43
Sub. 75	43
Sub. 76	43
Sub. 77	43
Sub. 78	43
Sub. 79	43
Sub. 80	43
Sub. 81	43
Sub. 82	43
Sub. 83	43
Sub. 84	43
Sub. 85	43
Sub. 86	43
Sub. 87	43
Sub. 88	43
Sub. 89	43
Sub. 90	43
Sub. 91	43
Sub. 92	43
Sub. 93	43
Sub. 94	43
Sub. 95	43
Sub. 96	43
Sub. 97	43
Sub. 98	43
Sub. 99	43
Sub. 100	43
Total	1,220

WARD FOUR.	
Sub. 101	100
Sub. 102	100
Sub. 103	100
Sub. 104	100
Sub. 105	100
Sub. 106	100
Sub. 107	100
Sub. 108	100
Sub. 109	100
Sub. 110	100
Sub. 111	100
Sub. 112	100
Sub. 113	100
Sub. 114	100
Sub. 115	100
Sub. 116	100
Sub. 117	100
Sub. 118	100
Sub. 119	100
Sub. 120	100
Sub. 121	100
Sub. 122	100
Sub. 123	100
Sub. 124	100
Sub. 125	100
Sub. 126	100
Sub. 127	100
Sub. 128	100
Sub. 129	100
Sub. 130	100
Sub. 131	100
Sub. 132	100
Sub. 133	100
Sub. 134	100
Sub. 135	100
Sub. 136	100
Sub. 137	100
Sub. 138	100
Sub. 139	100
Sub. 140	100
Sub. 141	100
Sub. 142	100
Sub. 143	100
Sub. 144	100
Sub. 145	100
Sub. 146	100
Sub. 147	100
Sub. 148	100
Sub. 149	100
Sub. 150	100
Sub. 151	100
Sub. 152	100
Sub. 153	100
Sub. 154	100
Sub. 155	100
Sub. 156	100
Sub. 157	100
Sub. 158	100
Sub. 159	100
Sub. 160	100
Sub. 161	100
Sub. 162	100
Sub. 163	100
Sub. 164	100
Sub. 165	100
Sub. 166	100
Sub. 167	100
Sub. 168	100
Sub. 169	100
Sub. 170	100
Sub. 171	100
Sub. 172	100
Sub. 173	100
Sub. 174	100
Sub. 175	100
Sub. 176	100
Sub. 177	100
Sub. 178	100
Sub. 179	100
Sub. 180	100
Sub. 181	100
Sub. 182	100
Sub. 183	100
Sub. 184	100
Sub. 185	100
Sub. 186	100
Sub. 187	100
Sub. 188	100
Sub. 189	100
Sub. 190	100
Sub. 191	100
Sub. 192	100
Sub. 193	100
Sub. 194	100
Sub. 195	100
Sub. 196	100
Sub. 197	100
Sub. 198	100
Sub. 199	100
Sub. 200	100
Total	1,220

WARD THREE.

WARD FOUR.

WARD FIVE.

WARD SIX.

WARD SEVEN.

WARD EIGHT.

MAYORALTY VOTE BY SUBDIVISIONS

WARD ONE.	
Subdivision 1	41
Subdivision 2	41
Subdivision 3	41
Subdivision 4	41
Subdivision 5	41
Subdivision 6	41
Subdivision 7	41
Subdivision 8	41
Subdivision 9	41
Subdivision 10	41
Subdivision 11	41
Subdivision 12	41
Subdivision 13	41
Subdivision 14	41
Subdivision 15	41
Subdivision 16	41
Subdivision 17	41
Subdivision 18	41
Total	803

WARD TWO.	
Sub. 19	83
Sub. 20	83
Sub. 21	83
Sub. 22	83
Sub. 23	83
Sub. 24	83
Sub. 25	83
Sub. 26	83
Sub. 27	83
Sub. 28	83
Sub. 29	83
Sub. 30	83
Sub. 31	83
Sub. 32	83
Total	911

WARD THREE.	
Sub. 33	43
Sub. 34	43
Sub. 35	43
Sub. 36	43
Sub. 37	43
Sub. 38	43
Sub. 39	43
Sub. 40	43
Sub. 41	43
Sub. 42	43
Sub. 43	43
Sub. 44	43
Sub. 45	43
Sub. 46	43
Sub. 47	43
Sub. 48	43
Sub. 49	43
Sub. 50	43
Sub. 51	43
Sub. 52	43
Sub. 53	43
Sub. 54	43
Sub. 55	43
Sub. 56	43
Sub. 57	43
Sub. 58	43
Sub. 59	43
Sub. 60	43
Sub. 61	43
Sub. 62	43
Sub. 63	43
Sub. 64	43
Sub. 65	43
Sub. 66	43
Sub. 67	43
Sub. 68	43
Sub. 69	43
Sub. 70	43
Sub. 71	43
Sub. 72	43
Sub. 73	43
Sub. 74	43
Sub. 75	43
Sub. 76	43
Sub. 77	43
Sub. 78	43
Sub. 79	43
Sub. 80	43
Sub. 81	43
Sub. 82	43
Sub. 83	43
Sub. 84	43
Sub. 85	43
Sub. 86	43
Sub. 87	43
Sub. 88	43
Sub. 89	43
Sub. 90	43
Sub. 91	43
Sub. 92	43
Sub. 93	43
Sub. 94	43
Sub. 95	43
Sub. 96	43
Sub. 97	43
Sub. 98	43
Sub. 99	43
Sub. 100	43
Total	1,220

WARD FOUR.	
Sub. 101	100
Sub. 102	100
Sub. 103	100
Sub. 104	100
Sub. 105	100
Sub. 106	100
Sub. 107	100
Sub. 108	100
Sub. 109	100
Sub. 110	100
Sub. 111	100
Sub. 112	100
Sub. 113	100
Sub. 114	100
Sub. 115	100
Sub. 116	100
Sub. 117	100
Sub. 118	100
Sub. 119	100
Sub. 120	100
Sub. 121	100
Sub. 122	100
Sub. 123	100
Sub. 124	100
Sub. 125	100
Sub. 126	100
Sub. 127	100
Sub. 128	100
Sub. 129	100
Sub. 130	100
Sub. 131	100
Sub. 132	100
Sub. 133	100
Sub. 134	100
Sub. 135	100
Sub. 136	100
Sub. 137	100
Sub. 138	100
Sub. 139	100
Sub. 140	100
Sub. 141	100
Sub. 142	100
Sub. 143	100
Sub. 144	100
Sub. 145	100
Sub. 146	100
Sub. 147	100
Sub. 148	100
Sub. 149	100
Sub. 150	100
Sub. 151	100
Sub. 152	100
Sub. 153	100
Sub. 154	100
Sub. 155	100
Sub. 156	100
Sub. 157	100