

R. S. LEA, M. Can. Soc. C. E.; M. Inst. C. E.  
M. Am. Soc. C. E.; Hydraulic & Sanitary  
Engineer

H. S. FERGUSON, M. Can. Soc. C. E.  
M. Am. Soc. M. E., M. Am. Soc. C. E.  
Engineer, Pulp., and Paper Mills,  
Power Plants

### R. S. LEA and H. S. FERGUSON ENGINEERS

Specialties: Water Supply, Sewerage, Water Power Development and Transmission.  
Steam Power Plants, Pulp and Paper Mills, Examinations and Reports  
Birks Bldg. Long Distance Tel. Up. 751. MONTREAL

WALTER J. FRANCIS, C.E.,  
M. Can. Soc. C. E.,  
M. Am. Soc. C. E.,  
M. Inst. C. E.

FREDERICK B. BROWN, M.Sc.,  
Mem. Am. Soc. M. E.,  
Mem. A. I. E. E.

### WALTER J. FRANCIS & COMPANY CONSULTING ENGINEERS

HEAD OFFICE—232 ST. JAMES ST., MONTREAL,  
LONG DISTANCE TELEPHONE—MAIN 5643  
CABLE ADDRESS—"WALFRAN, MONTREAL."—WESTERN UNION CODE

WILLIS CHIPMAN

GEO. H. POWER

### CHIPMAN & POWER CIVIL ENGINEERS

TORONTO

WINNIPEG

### CANADIAN INSPECTION & TESTING LABORATORIES, LIMITED

INSPECTING AND CONSULTING ENGINEERS AND CHEMISTS

Inspection and Tests of Waterworks and Municipal Supplies.

TORONTO WINNIPEG VANCOUVER Head Office: MONTREAL

### W. N. DIETRICH

ELECTRICAL AND MECHANICAL ENGINEER

REPORTS, ESTIMATES, PLANS, SUPERVISION, ETC.  
CONSULTING CONTRACTING.

16 ST. SACRAMENT ST.,

MONTREAL.

Telephone 5256

P. O. Box 1695

### JOHN S. ISDALE

ELECTRICAL ENGINEER AND SCIENTIFIC  
INSTRUMENT MAKER

Engineers and Surveyors Instruments. Nautical Instruments,  
Electrical Instruments. Electro-Medical Work. Fine Electrical  
Work and special Apparatus for Scientific Work.

527 Dunsmuir Street, : : : VANCOUVER, B. C.

### CARTWRIGHT, MATHESON & CO. CONSULTING ENGINEERS

PLANS, SURVEYS, REPORTS,

Superintendence of Construction for Railways, Wharves, Foundations,  
Bridges, Buildings, Water Supply, Power Plants and Irrigation.

601 ROGERS BUILDING

VANCOUVER, B. C.

ORMOND HIGMAN, Jr. B.Sc.

WILLIAM A. DOCTOR, A.I.A.

### HIGMAN & DOCTOR

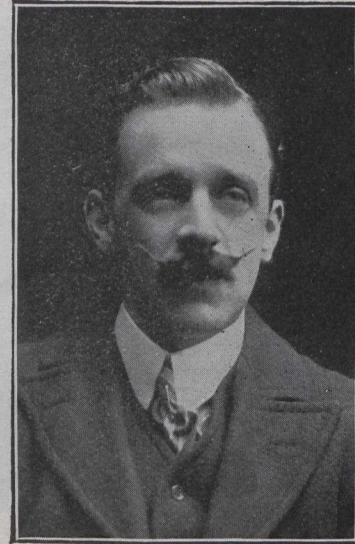
ENGINEERS, SURVEYORS AND ARCHITECTS

Hydraulic, Electrical, Mechanical and Municipal Engineering. Steel and Reinforced  
Concrete Construction. Arbitrations, Estimates and Reports.

31, 32, 33, 34 WILLIAMS BUILDING,

VANCOUVER, B. C.

# Engineers—And



## The Municipality and City Planning

GUY WILFRID HAYLER, Member, Institution of  
Municipal Engineers; Member, Royal  
Sanitary Institute, etc.

Until comparatively recent times the Municipality has practically taken the planning of its area for granted. Its code of regulations have been in the main general ones, and any sectional plan has been considered without taking into account its relationship to the whole. The result has been that certain desirable districts have been created, and a great many undesirable ones. With the growth of the city in all directions, the need of a comprehensive plan has become imperative, and this has brought into being what is now a world-wide movement for scientific city planning.

City Planning is of intimate concern to the Municipality, because it vitally affects the well being of the citizens. The Municipality must be the leader of progress and not merely the guardian of whatever is thrust upon it. City Planning means communal organisation, and the city suffers in every way by allowing streets and houses to be created without system. Congested property means bad sanitation, disease and death, and at the same time the propagation of an increasing number of physically, mentally and morally unfit members of Society. These are the burdens thrown upon our hospital, asylum and police departments, involving the citizens in much avoidable expense, as well as danger to the entire community.

The narrow street is awkward and inconvenient for traffic; vehicles and pedestrians are impeded; trade is dislocated and accidents arise. The Municipality is called upon to provide extra police, who do their best to create order out of an ever increasing chaos. It means little fresh air and light to all the property upon it, with unhealthy conditions of labour and residence, and without any counterbalancing advantages whatever. It establishes a waste of efficiency in health, strength and happiness.

City Planning gives to the Municipality for the first time a complete grasp of the whole city. It enables it to coordinate all its parts and arrange all its various phases of development, so that growth shall be harmon-