

*The Scurfy Bark louse (Chionaspis furfurus).*—The Scurfy Bark-louse is not so widely distributed through Ontario as the Oyster-shell Bark-louse, and does less damage. It occurs most commonly on pear,

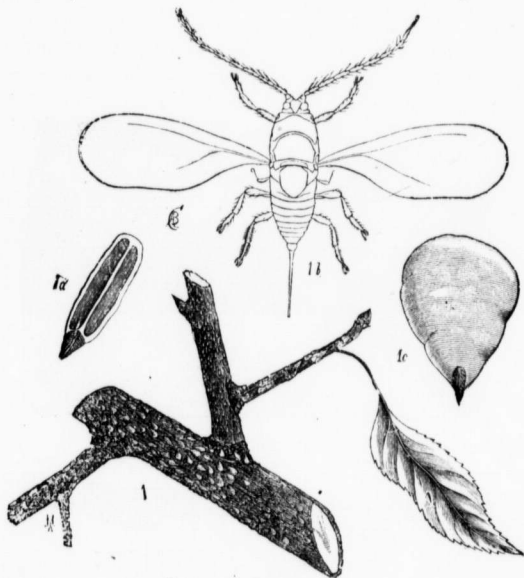


FIG. 31.—The Scurfy Bark-louse.

apple, gooseberry and black currant. This scale resembles the Oyster-shell Bark-louse closely in shape and size, the main points in which they differ being in the colour of the eggs and in the adult scale.

The eggs of the Scurfy Bark-louse are of a purplish colour, whilst those of the Oyster-shell are a whitish-yellow. The adult scale of the Scurfy Scale is also white in colour. The female scale is much larger and more oval than the male scale.

The same remedies may be employed against the Scurfy Bark-louse as are advised in this article as being most suitable for the Oyster-shell Bark-louse.