

Company's property and a two compartment shaft has been sunk to the depth of 150 feet. Extensive cross-cuts and drifts will be run from this shaft to thoroughly explore the ground, which is southwest from the Tyee mine and on the direct run of the lode.

The Tyee Copper Company has paid dividends to the total amount of 20 per cent. during the present year. It would have been quite possible to have more than doubled these dividends, but the directors are following the wise and conservative course of accumulating a large reserve fund. Besides the dividends and reserve fund, a large sum has been expended on capital account, in adding to building and machinery at both mine and smelter, thus increasing the efficiency of the works. All of this has been paid for out of profits.

#### VANCOUVER ISLAND MINING AND DEVELOPMENT COMPANY, LTD.

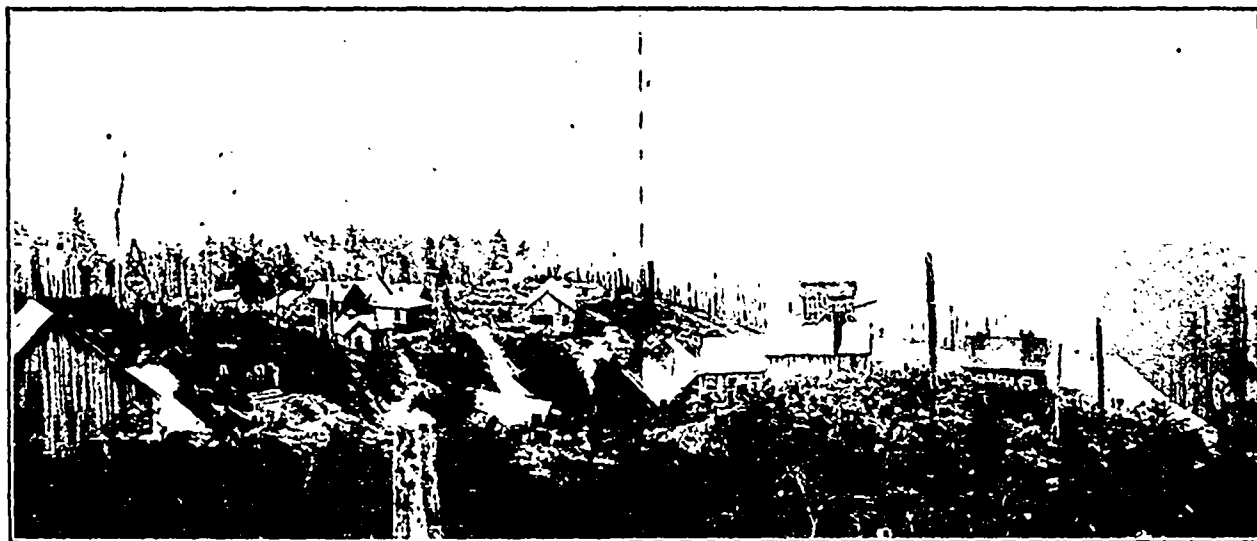
This London Company owns a large tract of mineral land to the east of the Tyee. A complete mining

heavy sacrifice at the present time to obtain the same, owing to the fact that strong companies are working each side of them on the lode. When work was discontinued, ore was showing strongly on the floor of the 500-foot workings, and which was apparently rising up from the as yet unexplored depths of the Richard III. and Tyee mines.

#### THE ALBERNI MINING DISTRICT.

(By Leonard Frank.)

There has been during the past season a greater activity in development of mining properties in our district than for some years past. The results have been generally satisfactory, and on several properties the continuity of ore bodies at great depth has been demonstrated. This is one of the chief reasons the management of the Nahmint Mining Company have decided to at once resume operations on a large scale on their property on the Alberni Canal. Mr. Cable,



The latest view of the Tyee Copper Company's mine, Mt. Sicker.

outfit has been installed on the "Westholme," comprising hoisting engine, boiler and compressor plant, and a two compartment shaft has been put down. By the end of the year, this shaft will have reached a depth of 500 feet. The rock is hard diabase, and the last 200 feet has been sunk in rather under eight weeks, which is about record work for this class of rock. At the 500-foot level cross-cuts were driven north and south for a total distance of 860 feet. This work disclosed a wide mineralized zone, portions of which showed concentrations of copper. Another cross-cut will be driven from the 500-foot level, to see if this mineralization has increased with depth.

#### RICHARD III. MINING COMPANY, LTD.

The Richard III. mine suspended operations last spring because of insufficient working capital, and the directors do not consider it advisable to make any

the mine manager, has a force of about twenty men at work, and all machinery is again in operation.

*Constitution.*—Much work has been done on this copper-gold claim. A tunnel has been driven on the lead for about 140 feet, and 130 feet of this is in ore. The mine is located on Coos Creek, about three miles from New Alberni, and only one-quarter mile from tidal water.

On Copper Mountain, opposite the Constitution mine, are two very promising properties, on which a good amount of work has been performed.

The S. and S. claims have done 50 feet of tunnelling, cross-cutting 12 feet of good ore.

The *Copper King* group, which adjoins the former, has also worked with satisfactory results.

*Happy John Group*—Extensive work has been in progress at this mine since May 1st. Some 175 feet