

CHESS.

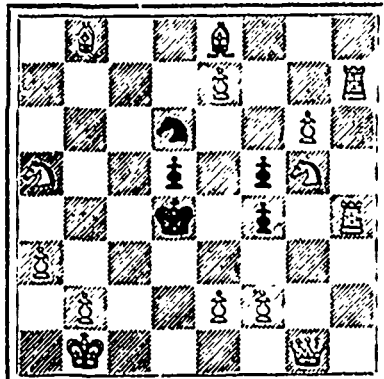
SOLUTIONS.

Problem No. 109: R to Q5; solved by J. S. G.

Problem No. 110: R to KR7; solved by J. S. G. and F. M. C.

PROBLEM No. 111.

By Mrs. W. J. Baird. Black 5 pieces.



White 14 pieces. White to play and mate in two moves.

GAME No. 111.

STEINITZ-TSCHIGORIN MATCH.

Lengthy as it is, we think we cannot do better than give this interesting "Evans" fight between the greatest living masters of the game:—

Fifteenth Game—Evans Gambit.

- White. Black. Tschigorin. Steinitz. 1 P to K4 P to K4 2 Kt to KB3 Kt to QB3 3 B to B4 B to B4 4 P to QKt4 B takes P 5 P to B3 B to R4 6 Castles P to Q3 7 P to Q4 B to KKt5 8 Q to R4 a P takes P 9 P takes P P to QR3 b 10 B to Q5 c B to Kt3 11 B takes Kt ch P takes B 12 Q takes P ch B to Q2 13 Q to B3 Kt to K2 14 Kt to R3 Castles 15 Kt to B4 P to Q4 16 P takes P Kt takes P 17 Q to B2 Q to B3 18 B to Kt5 Q to Kt3 19 Q to Q2 P to KB3 20 B to R4 B to Kt5 21 B to Kt3 QR to Q sq 22 KR to K sq Q to R4 23 Q to Q3 B takes Kt 24 P takes B K to R sq 25 P to QR3 B to R2 d 26 QR to Kt sq P to KB4 27 R to Kt7 B takes P 28 Q takes B P to B5 29 Kt to K5 P takes B 30 RP takes P Kt to B5 e 31 Q to B3 f Kt to Q4 g 32 Q to B5 Q to B4 h 33 P to B4 Q to B sq 34 R to Kt3 Kt to Kt3 35 R to QB sq Kt to R sq i 36 Q to B4 j Q to B4 37 P to Kt4 Q to B3 38 K to Kt2 k Kt to Kt3 39 Q to K4 Kt to Q4 l 40 P to B5 Q to Kt4 41 R to KR sq K to Kt sq 42 Kt to B6 R to Q3 43 K to Kt3 Kt to B3 m 44 Q to B4 ch K to R sq n 45 Kt to K5 Kt to Q4 46 R to R5 Q to K2 o 47 Q takes Kt p Resigns 3 h. 12 m. 3 h. 4 m.

NOTES BY W. STEINITZ.

a A line of play recommended by

Pollock. It effects the recovery of the pawn, but we prefer Black's position subsequently.

b Best, for white threatens B to Q Kt5, besides P to Q5.

c Of course much stronger than 10, P to Q5, 10, P to QKt4; 11, B takes P, 11, P takes B; 12, Q takes P, 12, KKt to Kt2; followed by castling.

d Black could have won here a pawn by 25... Kt to B5; 26, B takes Kt, 26, R takes P; 27, Q to B3, 27, R takes B; 28, Kt takes B, 28, R to K3, &c.

e The result of a miscalculation. Q to R6 was the correct play.

f This splendid answer is profoundly worked out.

g Black's attacking plan by 31... Kt to R6 is now useless; for after 32, K to Kt2, 32, Kt takes P; follows 33, R takes P, and if 33... Kt to Q6 (or 33... Q to R6 ch; 34, K takes Kt, 34, Q to R7 ch; 35, K to K3, 35, Q takes P; 36, Kt to B7 ch, and wins) 34, Kt takes Kt, 34, Q takes P ch; 35, K to R2, 35, Q to R4 ch; 36, K to Kt sq, and wins.

h If R to Q3 white could answer R takes P and KR to B3 is clearly out of the question on account of the reply Q takes Kt.

i Much inferior to R to Q4, as white could not then capture the pawn, for black could answer R to Q8 ch, followed by R takes R.

j Besides Kt to B7 ch, white threatens Kt to Kt6 ch., followed by R to R sq mate.

k 38, P to Kt5, followed by P to Kt6 was stronger.

l If 39... Q takes P, 40, Q takes Q, 40, R takes Q, 41, R takes P, 41, Kt to Q4; 42, K to Q7 and wins.

m Bad play as compared with 43... Q to Q7; 44, R to Q3, 44, Q to B7, with an excellent attack.

n If 44... Kt to Q4; 45, R to Q3, 45, R takes P; 46, Kt to Kt7 ch; 46, Q takes Kt; 47, P takes R, and should win.

o A terrible oversight. 46... Q to Q sq, 47, R to Q3 (47, Kt to Kt6 ch, 47, R takes Kt; 48, P takes R, 48, Q to Q3 ch; would not be good for white), 47... P to B3; 48, P to B4, 48, Q to Kt sq was likely to lead to a draw.

p A pretty sacrifice of the queen, though somewhat simple.

NEWS OF THE WEEK.

The Halifax County Academy examinations took place yesterday.

Some of the saw mills on the St. John River have already commenced operations.

The funeral of the late Prof. S. Porter was held in Halifax on Friday last. It was one of the longest that taken place for many years.

The Dartmouth Ferry Commissioners have decided not to hire out any boats of the Company for picnics or excursions during the coming summer.

The New Brunswick Legislature was prorogued on the 7th inst. The leader of the government and the leader of the opposition are both going to England.

The annual meeting of the Lorne A. A. Club was held on Tuesday evening, when election of officers took place. A successful season is anticipated.

City Assessor Creelman, mixed up in the Gough arrangement, has been committed for trial in the Supreme Court. Bail to amount of \$1,000 was required and there are two sureties in \$500 each.

A Victoria, B. C. dispatch says that sealers are already doing some business. The sealer Carlotta Cox has 400 skins according to report from San Juan, and the Mary Ellen has a similar number.

"Dad's Girl" will be produced at the Academy of Music on Monday evening by the Josie Mills company. A St. John paper referred to a performance of the piece in that city as follows:—"The Josie Mills' company presented the comedy drama, 'Dad's Girl' at the Opera House last night, being the first production of the piece before a St. John audience. It was a first class performance in every respect. The company certainly are the best aggregation of dramatic talent that has appeared in the Opera House, and last evening fully justified the many newspaper encomiums passed upon them in other places. Miss Josie Mills and John E. Ainsley divided the lion's share of the honors, if the latter were at all advisable, the former as 'Mul,' the brave girl, displaying much versatility, and at times a highly dramatic force which at once attracted and held the attention of the audience."

SKODA'S GERMAN SOAP; "Soft as Velvet," "Pure as Gold," that tells the whole story. Most highly medicated soap ever made. Try one cake. It is elegant. At all Druggists. Price, 25 cts.

SKODA'S DISCOVERY contains MORE CELERY than any CELERY COMPOUND made.



CHARLES EMMET.

"I AM CURED!" Physicians, Pills Remedies and the Knife UTTERLY FAILED! Yet there was Help!

GENT.—I wish to inform you that the treatment consisting of SKODA'S REMEDIES you sent me for Piles, has, as you stated in your letter accompanying the same, actually cured me.

BETTER THAN SKODA'S DISCOVERY. Why, gentlemen, I can hardly realize it, when I stop to think of the long years of suffering I have endured, of the Physicians employed, of the two surgical operations performed, of having had the Piles removed with the knife, and all I could get was temporary relief. But now after taking seven bottles of SKODA'S DISCOVERY, I am cured.

I am now able to work every day, and shall start on a few days to work cutting timber. You freely gave me the medicine but I want to partially pay you for what you have done. Enclosed find \$2.00. I shall be glad to pay for one operation that did me really good. Gratefully yours, Bangor, Me. CHAS. EMMET. Guarantee Contract with Every Bottle. SKODA DISCOVERY CO., Wolfville, N.S.

SKODA'S LITTLE TABLETS, Mild, Safe, Efficient. Far superior to any pill. For Headache and Liver Complaint nothing can equal these Tablets. With the DISCOVERY they cure Rheumatism. 50 in a box only 35 cts.

Advertisement for Scott's Emulsion. Features a small image of a man carrying a large fish on his back. Text: GAIN ONE POUND A Day. A GAIN OF A POUND A DAY IN THE CASE OF A MAN WHO HAS BECOME "ALL RUN DOWN," AND HAS BEGUN TO TAKE THAT REMARKABLE FLESH PRODUCER, SCOTT'S EMULSION OF PURE COD LIVER OIL WITH Hypophosphites of Lime & Soda IS NOTHING UNUSUAL. THIS FEAT HAS BEEN PERFORMED OVER AND OVER AGAIN. PALATABLE AS MILK. ENDORSED BY PHYSICIANS. SCOTT'S EMULSION IS PUT UP ONLY IN SALMON COLOR WRAPPERS. SOLD BY ALL DRUGGISTS AT 50c. AND \$1.00. SCOTT & BOWNE, Belleville.

If you wish to advertise anything, anywhere, at any time, write to GEO. F. ROWELL & CO., No 16 Spruce St., New York.

Advertisement for Truro Foundry & Machine Co. Text: TRURO FOUNDRY & MACHINE CO. TRURO, N. S. MANUFACTURERS. GOLD MINING MACHINERY A SPECIALTY. Boilers and Engines, Stoves, Ship Castings and Ship Steering Wheels. IMPROVED ROTARY SAW MILLS. SHINGLE and LATH MACHINES. COMPOUND CONDENSING ENGINE, for Mining, etc. HOISTING PLANTS, Gold Mining and Mill Machinery. WRITE FOR PRICES. W. W. HOWELL & CO. 121 and 123 LOWER WATER STREET.