

THE ONTARIO BOLT CO.

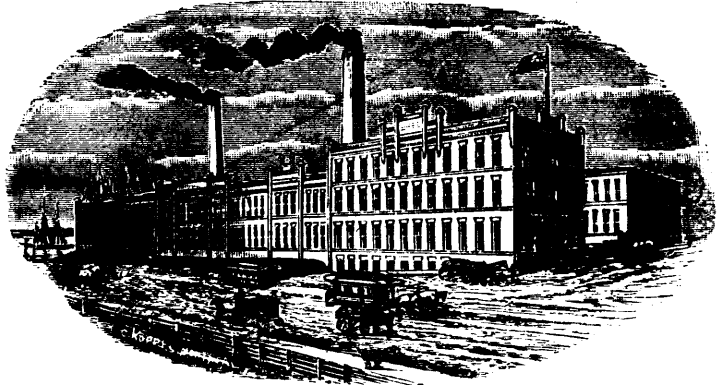
(LIMITED),

SWANSEA, near Toronto.

—MANUFACTURERS OF—

- Bridge Rods, Gib Plates, Straps, Braces and Bolts,
- Drift Bolts, Washers, Prisms and Roof Rods,
- Bolts, Braces, Straps, Bolt Ends and Blank Bolts,
- Drop Forgings, Carriage Hardware
- Including Clips, Steps, Stump Joints,
- Offsets, Stay Ends, Herbrand Fifth Wheels,
- Sleigh Braces, Couplings, Body Loops,
- Threshing Machine Teeth, Pitman Irons,
- And all kinds of Special Work.
- Machine Bolts, all sizes,
- Coach Screws and Skein Bolts,
- Whiffletree Bolts, Best Elevator Bolts,
- Best Plough Bolts, all kinds,
- The Prize Tire Bolt, Best Shaft and
- Step Bolts, Best Eccentric Head,
- and Spring Bolts,
- Best Norway Shackle Bolts, Railway Track Bolts and Spikes,
- Rivets, Best Bridge and Boiler and Black Iron,
- Wire Nails and Pressed Spikes,
- Nuts, Hot Pressed, Forged and Cold Pressed,
- Carriage Bolts, Superb, Eclipse,
- Sleigh Shoe and Prize, all sizes.
- Howells Patent Iron Wheels

DOMINION TIN AND STAMPING WORKS



- Plain, Stamped and Japanned Tinware,
- Copper Goods,
- Star Patent Stove Pipe Thimbles,
- Stove Boards, Wire Goods,
- Machine Oilers, Coal Hods,
- Fire Shovels, House-furnishing Goods.

SPECIALTIES—Spice Tins, Mustard Tins, Baking Powder Tins, Blacking Boxes, Pain Irons, Lye Cans, Grocers' Canisters, Square and Round Oil Cans, Oil Tanks, Patent Butter Tubs (Tin Lined).

KEMP MANUFACTURING CO.

Cor. Gerrard & River Sts., Toronto.

Balcony Fire Escapes

(BATTEN'S PATENT)

ADVANTAGES :

The advantages of the BATTEN FIRE ESCAPE over all others are :

That the balconies are made of the best wrought iron, of any ornamental design or pattern, and securely bolted through the walls. Can be made any length or width. The brackets and flooring are capable of bearing any number of persons standing on them. The ladders, with wide steps and of easy grade, can remain down permanently, or folded up, as desired, showing the ornamental balcony only in sight, which does not mar the architectural beauty of the building, and can be instantly released when desired. No ice or snow will remain on them, neither will the working parts rust; and they will work admirably in any weather.

A Stand Pipe is also connected for high buildings, with valves at each door and on the roof.

Our Escapes have been fully tested at fires and proved themselves invaluable for saving life and property. Iron guards on windows of Asylums and Reform Schools can be so adjusted as to be instantly released in the case of fire by the unfolding of ladder or sounding of a gong.

Straight Iron Ladders.

For situations not requiring a Balcony Fire Escape I can quote reasonable prices for strong and well finished STRAIGHT IRON LADDERS.

FREDERIC NICHOLLS,

Sole Manufacturer for Canada,

The Permanent Exhibition of Manufactures,

63 to 69 Front St. West, TORONTO.

BUTTERFIELD & CO.

MANUFACTURERS OF

- Relieved Hand, Machine or Nut, Pulley Masters or Hobs
- Boiler Tapper, Stay Bolt, Blacksmiths' and Machine
- SCREW TAPS.**



SOLID and ADJUSTABLE DIES. PIPE TAPS and DIES
TAP WRENCHES.

BLACKSMITHS' AND MACHINISTS' SCREW PLATES, Etc.

Send for New Illustrated Catalogue, **ROCK ISLAND, P.Q.**