

Cubular Separators Reveal Hidden Creasurs

When the tubular separator is used, the hidden creasurs are revealed to the naked eye. The separator is made of wire and is used in the same way as the ordinary separator. It is used to separate the hidden creasurs from the wool. The separator is made of wire and is used in the same way as the ordinary separator. It is used to separate the hidden creasurs from the wool.



The tubular separator is made of wire and is used in the same way as the ordinary separator. It is used to separate the hidden creasurs from the wool. The separator is made of wire and is used in the same way as the ordinary separator. It is used to separate the hidden creasurs from the wool.

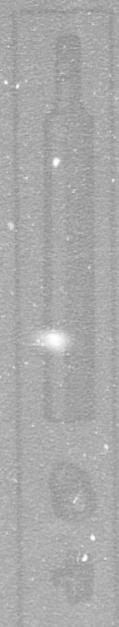
The tubular separator is made of wire and is used in the same way as the ordinary separator. It is used to separate the hidden creasurs from the wool. The separator is made of wire and is used in the same way as the ordinary separator. It is used to separate the hidden creasurs from the wool.

TUBULAR SEPARATORS

These separators are used to separate the hidden creasurs from the wool. They are made of wire and are used in the same way as the ordinary separator. They are used to separate the hidden creasurs from the wool.

The tubular separator is made of wire and is used in the same way as the ordinary separator. It is used to separate the hidden creasurs from the wool. The separator is made of wire and is used in the same way as the ordinary separator. It is used to separate the hidden creasurs from the wool.

Write for catalogue and learn about tubular separators.



The Sharples Co. P. M. Sharples
Chicago, Ill. West Chester, Pa.

TUBULAR
SEPARATORS