

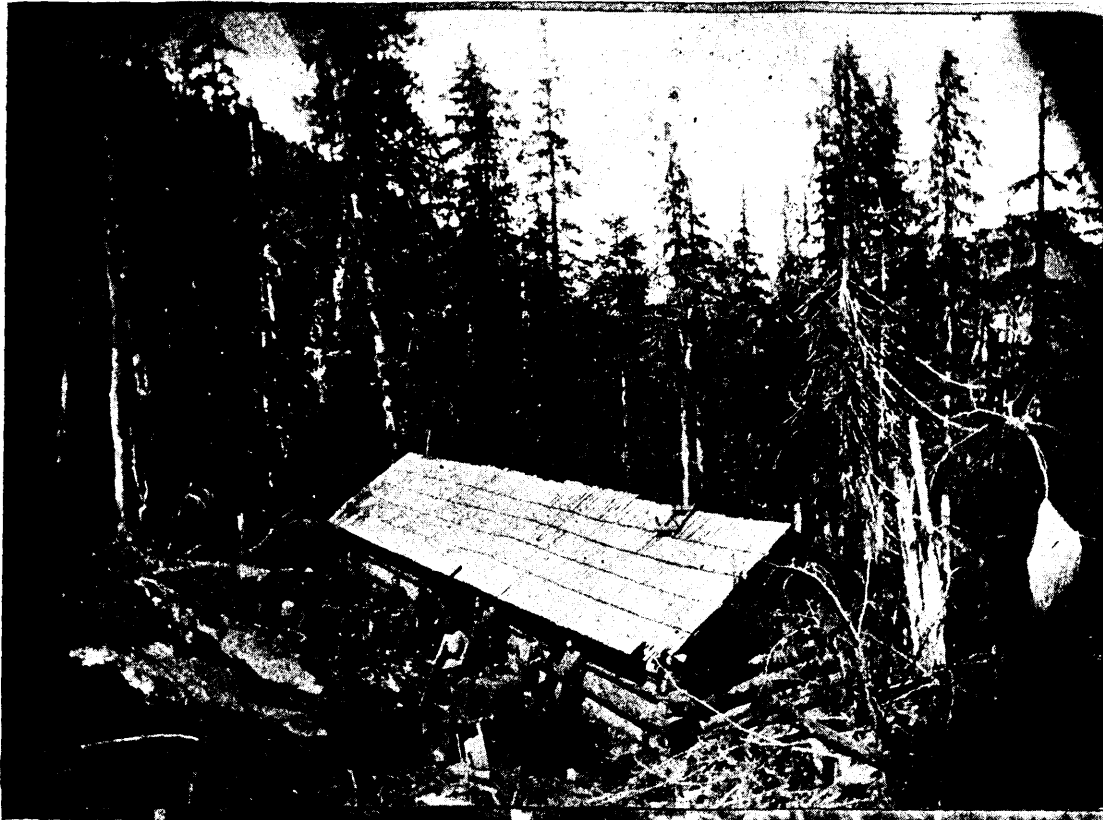
THE MORISON MILL AND CYANIDE PLANT AT THE DOROTHA MORTON MINE.

THE Dorothea Morton claim is situated on a mountain 2,300 feet above Fanny Bay, Phillips Arm, Coast District. It was bonded by the Fairfield Ex-

which taps the ledge 90 feet from the surface, and drives east and west on the pay streak have been run. The width of the ledge is 100 feet, the metals carrying low grade values; but at present it is not intended to work more than 10 feet, which forms the pay streak. This is well defined, and occurs about 20 feet from

the hanging wall, assays indicating the value of the pay streak to be about \$20 to the ton.

A main working tunnel, 8 by 6 feet, is being driven to strike the ledge 300 feet from the surface; but it is anticipated that 550 feet will have to be driven before the pay streak is reached, two hundred feet of tunneling having already been driven. The driving is carried on with rock drills, the power for



ploration Syndicate Ltd., on the 18th July, 1897, and is now owned by them. Work was at once started, and has been continued up to date. Besides the Dorothea Morton, the syndicate own adjoining and on the extension fourteen claims. About 1,200 feet of driving has been done, and the mine is opened up by a cross-cut tunnel,



1. The Bunk House at the Dorothea Morton. 2. Upper Tunnel.