

**PER S.S. SACHEM**  
Shipment of  
**ENGLISH POUND TWEEDS**

All good Patterns.  
Also, Blue, Grey and Brown Serges, Scotch Tweeds and Fancy Suitings.

**Overcoatings**

in Plain and Fancy Colours and NAPS in Blue, Brown and Grey.

All trimmings from the measuring tape up.

**GREAVES & SONS**

Wholesale Dry Goods Queen Street, Oct. 6.

**Resolutions Urging Interference in China Adopted by Japanese**

**Rum Running Conspiracy Involving \$10,000,000 Uncovered—Newfoundlander Killed Over Money Matters is Belief of Bedford Officials—Chinese Government Troops Capture Prisoners and Supplies of Ammunition.**

**JAPANESE URGE INTERFERENCE IN CHINA.**

TOKYO, Oct. 4. Five thousand persons, including members of the House of Peers and Representatives, attending a meeting in Shiba Park to-day, adopted resolutions urging the Japanese Government to interfere in the civil war in China as an ally of General Chang Tso-Lin, Manchurian leader, who is carrying on hostilities against the Peking armies for the control of the central government of China. The Japanese Government must carry out a policy in China independently of the other powers, the resolution says. This is made necessary owing to Japan's special position in China. Major General Sato, retired, addressing the meeting said Japanese troops should be sent to China before the Peking troops entered Manchuria where General Chang Tso-Lin rules.

a month ago, is now being held and the discussion naturally centered on the subject of election. There has been an unprecedented demand from the general public for tickets for the London party conference opening in London next Thursday. For the first time in labour's political history it has been necessary to charge admission to the public balcony. An election lead is expected from Premier MacDonald, when he believes the inaugural address, but official labour circles consider that political prophets have got far astray in attaching such importance to the worker's weekly incident and the proceedings incidental to anti-Government motions proposed in the House of Commons on Wednesday. The general belief of the labour leaders is that Premier MacDonald's defeat and dissolution will come on the Liberal motion as regards the Russian treaty.

**RUM RUNNER CAPTURED.**

NEW YORK, Oct. 4. Prohibition agents claim to have uncovered a gigantic Anglo-American rum running conspiracy with \$10,000,000 involved, when they towed in to harbor to-day the twin-screw British steamer Frederick E., with its crew of 28 men and two women, under armed guard, and with \$500,000 liquor cargo aboard. Five special Government agents, under the leadership of William A. Walker, of Washington, general field superintendent of the dry forces, made the capture after they had, according to Mr. Walker, dickered for the purchase of 25,000 cases of whiskey from the vessel's master, paying \$100,000 in currency and checks for contraband bankers in this country. Great Britain and Canada were concerned in the conspiracy, Walker said.

**NEWFOUNDLANDER KILLED.**

BEDFORD, Mass., Oct. 4. The theory that Frederick A. Clements, who turned from ministerial training in Newfoundland to run a garage at Burlington, was killed by a man after a quarrel over money matters, occupied the attention to-day of officials investigating his death. Belief that an arrest would be made by night was expressed by one of the officials.

**SWAN IS MILES.**

BOSTON, Mass., Oct. 5. Miss Eva Morrison, aged 19, daughter of the Chief of Police, Picot, N. S., to-day swam the twelve miles to Boston Light, the classic test of New England swimmers in seven and a half hours. The temperature of the water varied from fifty to fifty-four degrees.

**COAL COMPANY'S TUG LOST.**

SYDNEY, N.S., Oct. 5. While nosing her way through fog at the entrance of Igonish Harbor, about half past three o'clock, Saturday afternoon, the Dominion Coal Company's 212 ton gross steel tug

Douglas H. Thomas, struck the shoals and tore out her obitism, and sank in twenty feet of water in about ten minutes, her crew losing their belongings in their haste to escape from the craft. It is thought the ship will be a total loss. Wrecking tugs have gone to her assistance. The Douglas Thomas is registered in Newfoundland.

**PRINCE SAILS FOR VICTORIA.**

VANCOUVER, B.C., Oct. 5. H.R.H. the Prince of Wales concluded his short stay in Vancouver to-day, sailing at 1 o'clock this afternoon for Victoria on the Princess Louise, which the Canadian Pacific Railway Company had placed at the disposal of the Royal party. Ten thousand throats sent up cheers as they swung away from the pier, every point of vantage being crowded with persons anxious to get a glimpse at the Prince and to assure him of their loyalty.

**CHINESE GOVT. TROOPS SCORE SUCCESS.**

PEKING, Oct. 5. An official communication issued to-day says the Chinese Government troops on the Shan-Haifwan front have captured Hung Chuang Tau and taken prisoners and supplies of ammunition.

**AIRMAN KILLED.**

DAYTON, Ohio, Oct. 5. Capt. Burt Skel, Commander of the Twenty-Seventh Squadron of the first United States Army Pursuit Group, Selfridge Field, Mount Clemens, Mich., fell to his death from an altitude variously estimated at between 500 and 1,000 feet, at Wilbur Wright Field, yesterday, as he was preparing to swing into a flying start in Pulitzer Race, the last event of the International Air Races. Forty thousand spectators saw Skel's plane break in pieces and fall from the sky. As the seemingly match like splinters rained down, Lieut. H. W. Brookley, of McCook Field, shot his fellow flier's body lay imbedded in the soft clay and so on into the race.

**GASOLINE REDUCED IN MONTREAL.**

MONTREAL, Oct. 5. The price of gasoline in Montreal will be reduced three cents per gallon on Monday, according to an announcement made here to-night. Gasoline will be retailed at 26 cents per gallon, including all taxes.

**Many Advantages**

There are many advantages in using Pearline, the great washing Powder. Women find it easier to wash with than soap and it does not injure the hands or the fabric. Pearline makes light work of wash-day, and for cleaning pots, pans, kettles, etc. it has no equal. A package of Pearline in the pantry is a good investment for every woman who prides herself on the cleanliness of the home. Ask your grocer for Pearline, he can sell you a generous package for ten cents—2

**Hindu Paradise**

TWO THOUSAND GUINEA PICTURE IN GEMS.

The abode of Vishnu—the Preserver of the Hindu Trinity—is considered to be the highest of all heavenly abodes, where only the very select are privileged to go after death.

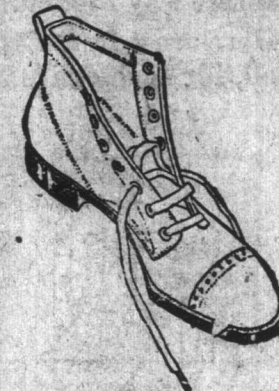
An Indian artist of olden times who tried to draw a picture of this paradise used emeralds, sapphires, diamonds, pearls, and other gems in the making of it; 7,000 stones have been used in its framework.

It has been priced at 2,000 guineas, and is now exhibited at the Benares silk stall in the United Provinces Court of the Indian Pavilion at Wembley.

**Grand Display NEW FALL MERCHANDISE!**

All Prices Exceedingly Low. The Values will convince the keenest buyer

**New Fall FOOTWEAR**



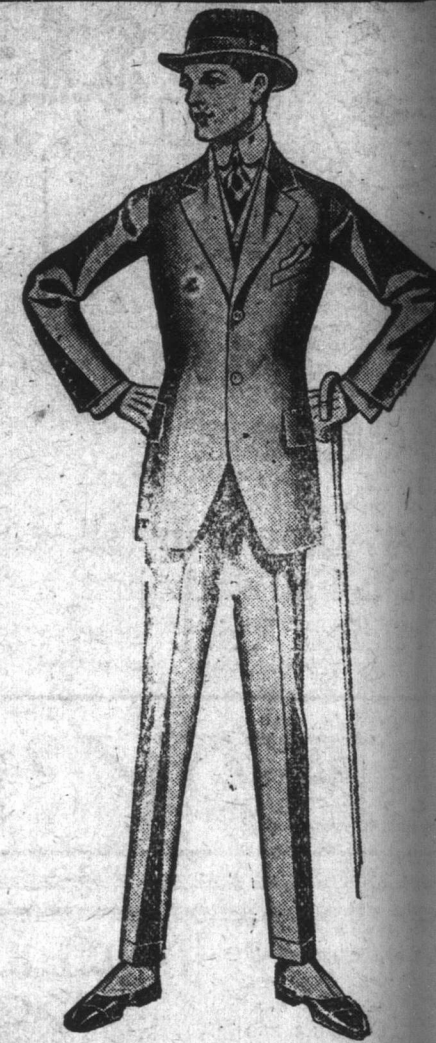
Men's Box Calf Blucher Style, with Rubber Heel at \$4.50, \$5.00, \$6.50  
Men's Black Vici Kid Blucher, Rubber Heel \$4.50, \$5.00, \$5.50  
Men's Black Vici Kid Blucher, Rubber Heel, Wide Toe, Cushion Sole \$5.75

Men's Black and Tan Calf Blucher, Goodyear Welt, Brogue Last, Rubber Heel. \$5.75

Men's Heavy Work Boots, Black and Tan. \$3.50 and \$4.00



Ladies' Black and Brown Kid, 2-Strap Shoes, low rubber heel. \$2.50  
Ladies' Fine Black Vici Kid Shoes, fancy cut-out Strap, medium rubber heel. \$4.35  
Ladies' Mahogany Kid 1-Strap, 2 Button Shoes, low rubber heel. \$4.50



**MEN'S SUITS**

VALUES THAT ATTRACT

Here's a Tip to Value Seekers! Prices mean nothing until you have seen the goods you are to get. Be sure to see our Suits.

**TWEED SUITS**

\$11.90, 13.75, 15.00, 16.50, 19.00, 23.50, 25.00

Fine All Wool Navy Serge Suits \$19.50, 25.00, 32.50

**NAVY RAGLANS**

With Belt \$16.00, 22.50, 26.00

**Showroom Attractions! NEW FALL MILLINERY.**

American and English. Charming New Styles.

**NEW DRESSES**

We want particularly to emphasize the pretty Styles and Values in Serge, Poirat Twill and Charmine.

\$5.75, 8.75, 10.50, 11.75 to 25.00

**DRESS GOODS**

SPECIAL 1200 YDS.

Fine Twilled Gaberdine, in Copen Blue, 36 inches wide. 39c. yard.

All Wool English Tweeds, in Plaids and Stripes for Shirts. 78c. 83c. 90c. and \$1.00 yd.

**New Fall Hats**



Misses' All Wool NAVY SERGE DRESSES Pretty Styles, to fit 7 to 14 years. \$5.75 to \$7.50

**BOUDOIR CAPS**

Assorted Colored Lace trimmed 18c.  
Silk Boudoir Caps, Lace trimmed. 38c.

Natural Shantung Raw Silk 33 inches wide. \$1.20 yard.

**Ladies' Sweaters**

Special lot, PullOver Style, All Wool, with long girdle, tasselled ends, in American Beauty, Turquoise, Buff, Brown. \$2.25

COAT SWEATERS—All Wool, good weight, with Belt and Pockets, in Brown, Peacock, Camel. \$3.75

ALL WOOL COAT SWEATERS—Tuxedo style, in Pearl, Camel, Navy, Turquoise. \$5.00 and \$6.50

PRETTY SILK & WOOL TUXEDO SWEATERS, in Brown, Buff and Lavender. \$4.50

**Little Boys' Velvet and Plush Hats**

In Black, Brown and Fancy. Extraordinary value. \$1.25

These Bedspreads by the pound, we advertised last week, are selling fast. Secure one or two before they are all sold. \$1.25 per lb.

**STEERS, LIMITED**

**Paint This Fall**

AND SAVE REPAIRS NEXT SPRING.

Now's the time. Obey the Fall Painting Impulse!

WE STOCK EVERYTHING IN THE PAINT LINE.

RAINBOW PAINT—IN ALL SHADES

For Inside and Outside Work—Also,

GOOD ENGLISH & AMERICAN BRANDS

We carry one of the BEST Lines of BRUSHES made. Prices ranging from 10c. up. All set in rubber.

We offer a Special 10 p.c. Discount for Cash during the first two weeks of October.

All cash orders received before October 15th, will be subject to this discount.

**W. & G. Rendell,**  
Water St., East.



**Roast Partridge**

Like all game, roasting is the best method of cooking young partridge. Pluck, draw, and singe the birds. Wipe them inside and out with a cloth wrung out in hot water and truss. Tie a piece of fat bacon over the breasts and roast in front of a clear, bright fire or in a good oven. Baste often with dripping or butter or the flesh will be dry. A few minutes before serving remove the bacon, dredge the breasts with flour and pour over a tablespoonful of butter or margarine, and again roast or bake until the breasts are nicely browned. Young birds take from 25 to 30 minutes to roast, older ones 45 minutes.

To Serve—Entrust the birds and dish on a hot dish. Garnish with watercress. Hand brown gravy, bread crumbs, bread sauce, or fruit, potato straws, and a green salad. Two partridges should suffice for four people.

Pearline for easy washing. July 17/24



**Wireless for Lighthouses**

Weather Warnings to Ships at Six Brighter Beacons.

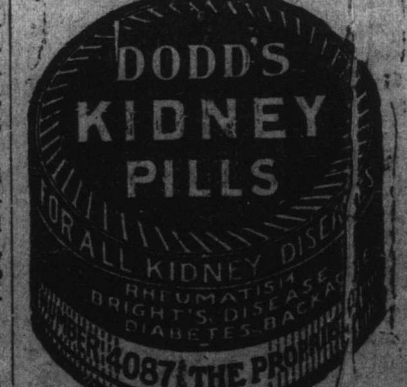
The Daily Mail is informed that all lighthouses on the coast of Great Britain will be fitted with wireless transmitting sets with a skilled operator in charge whose duty it will be to warn ships at sea of impending danger. Experiments carried out on the Goodwin's have already prevented many vessels from foundering on the treacherous sands.

In addition to wireless all lighthouses have had the power of their beacons increased by the introduction of a petroleum vapour burner which gives double the light supplied by paraffin oil.

Four lightships have already been fitted with wireless, and the results obtained are considered highly satisfactory. An official at Trinity House, the headquarters of the Lighthouse Commissioners, told a Daily Mail reporter recently: "It may be some months before the wireless sets are fitted, but there is no doubt that they will greatly increase the warning capabilities of the lighthouses. Reports on weather conditions and heavy seas will be sent out to mariners, who will also have the light to warn them of dangerous coasts and shoals."

**C. C. C. BAND CONCERT, Bannerman Park.**—By kind permission of the Municipal Council the C. C. C. Band will give a Concert in Bannerman Park on Monday night, Oct. 6th, at 8 o'clock in aid of uniform fund. (Weather permitting.)—Oct. 21

MINARD'S LINTNET FOR HEAD. A.C.M.S.



**CONCEPTION BAY SERVICE S. Y. "PAWNEE"**

Carbonear	Harbor Grace	Bell Island	Portugal Cove
Mon. Wed. Fri.	Tue. Thur. Sat.	Daily	Daily
Leave 7.20 a.m. Arrive 6.30 p.m.	Leave 7.20 a.m. Arrive 6.30 p.m.	Leave 9 a.m. and 2 p.m. Arrive 9.45 a.m. and 6 p.m.	Arrive 9.15 a.m. and 2.15 p.m. Leave 9.30 a.m. and 4.30 p.m.

Above Schedule Daily except Sunday.

J. B. MARTIN, Agent, Bell Island. BELL ISLAND S.S. CO., LTD. GEO. NEAL, LTD., Agents, St. John's.

**Pilotless Plane**

**FALLS INTO SEA OUT OF CONTROL**  
The veil has been lifted unintentionally from secret air experiments at Whale Island, in Portsmouth Harbour, in the control by wireless of small pilotless aeroplanes. One of the machines was flying recently and apparently it passed beyond the control of the ground operator, and set off on its own account on a pilotless flight. It came down in the sea off Bognor, nearly 20 miles from its starting point. When it was seen floating in the water fears were expressed for the supposed pilot, and there was considerable surmise about his fate until it became known that the craft was pilotless. When the machine passed tempo-

arily out of control the Selsey coastguards were asked to look out for it. British experimental work on wireless control in the air has been going on since 1915. In the United States a pilotless aeroplane has been flown for nearly 100 miles by wireless. The "flying bomb," a machine carrying a load of explosives, can be controlled from a ground-station and made to fall in any area.