

Be Sure To See—

THE MOST IMPORTANT FARM EXHIBIT

At Toronto

Right next the Government's Greater Production Exhibit—DELCO-LIGHT, the farm electricity plant that is increasing production and saving labor on over 50,000 farms. Simple, safe, economical, and wonderfully efficient. This is the biggest and most vital exhibit for farmers at the fair. Be sure to see it.

If you can't come to Toronto, write to C. H. Rooke, Limited, for free illustrated literature.

THE DOMESTIC ENGINEERING CO., DAYTON
C. H. ROOKE, LIMITED, 173 KING E., TORONTO
DELCO-LIGHT

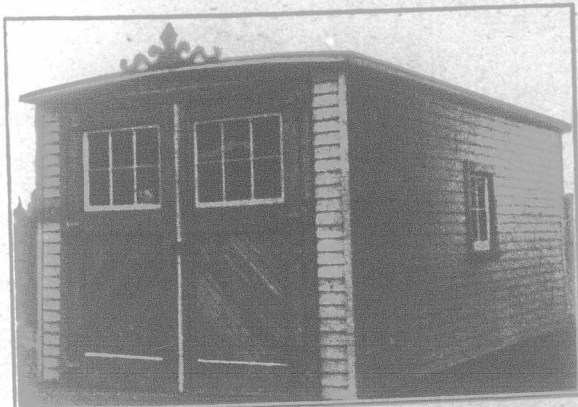
WILLIAMS New Scale PIANOS



THE example of the late Queen Victoria in selecting the Williams New Scale Piano has been followed by many of the world's most renowned musicians. This fact has caused it to be known as the Choice of the Great Artists.

Louis XV Model, \$550.00
THE WILLIAMS PIANO CO., LIMITED, OSHAWA ONT.
Canada's Oldest and Largest Piano Makers

The Auto-Home Garage



is just what you need for your car. It is built in sections; any one can erect it. It is painted and glazed complete. Built in four sizes. Send for full particulars.

A. Coates & Sons

Manufacturers
Burlington, Ontario
Box 151

The Irish recruit was doing his first bit of sentry-go. Just after midnight he pricked up his ears at the sound of approaching footsteps.

"Halt—who goes there?"

"Officer of the day," came the reply.

"Git on wid yez!" cried Pat. "Phwat the blazes are ye doin' out at this toime o' noight?"—Passing Show.

WANTED Alsike, Timothy, Red Clover, Ontario Grown Alfalfa, and White Blossom Sweet Clover. If any to offer please mail samples, and we will at once let you know highest prices we will pay f.o.b. your station. **TODD & COOK,** Seed Merchants, Stouffville, Ontario

Questions and Answers. Miscellaneous.

Flax for Fibre.

1. What is the value of flax straw?
2. Can flax be baled and shipped?
3. Should the flax be cut or pulled, when the fibre is to be used for linen?
4. Can flax be threshed with an ordinary grain thresher without injuring the straw?
5. What is the market price of flax seed?

6. What is the weight of a bushel of flax seed?
7. Where is there a good market for flax fibre?

Ans.—1. Vale of flax straw with seed on delivered f. o. b. the siding should be worth in or about \$40 per ton.

2. It would be poor business to bale flax straw with seed on. I would suggest in order that it might be baled to have it threshed and retted.

3. The proper way to harvest flax for fibre and linen yarns production is to have it pulled by hand, as we find by cutting same with the reaper or binder practically six inches of the straw is left in stubble and has a tendency to let it dry out and reduce the spinning qualities considerably.

4. When threshing flax straw through an ordinary grain thresher it is impossible to use the flax for the manufacture of any kind of yarns or twines. It could possibly be utilized for upholstery tow.

5. The current market price of seed for last season was \$6.50 or \$7 per bushel, and the possibilities are that seed will be in or about the same price this year.

6. One bushel of seed is equal to four pecks or 56 pounds.

7. We have a very good market for the flax fibre in the U. S. A. and might say that the production of 2,000 acres would only be a drop in the bucket. We have also a very good market for our fibre producing seed in Ireland. R. J. H.

Value of Crops.

1. What is the value of an acre of oats of good quality, also of beans and corn?
2. What is the treatment for thrush?
3. What is the cost of threshing per hour? Do the workers have to be boarded?
4. How much has land increased in value in Ontario during the last two years?
5. How much is straw worth in a field five miles from London?

6. A purchased a farm from B and paid a certain sum on it, and agreed to pay so much each year, the final payment to be made in a certain number of years. In case A cannot make the final payment, will the place be forfeited to B such being the wording of the agreement? A. C.

Ans.—1 It depends on the yield of the crop. Oats are selling at from 85 to 86 cents per bushel, and straw is worth somewhere around \$8 a ton. Of course the cost of harvesting would have to be deducted. This could be figured at so much per day for man, horsepower and machinery. The price of an acre of beans and corn would also depend on the yield. The valuation is from \$3 to \$4 for a ton of corn after it has been ensiled. To get the value of the field the cost of ensiling would have to be deducted.

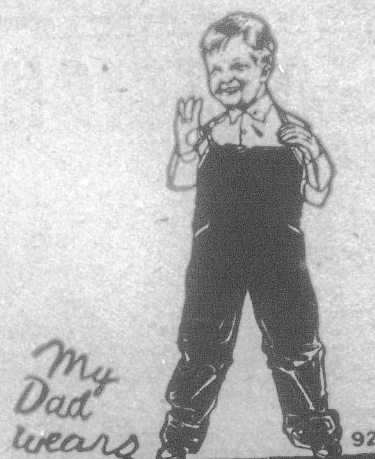
2. Cleaning out the cleft and filling it with calomel will very often effect a cure. Formalin has also been used with success.

3. The price and custom varies in different localities, but in Ontario as a rule the man for whom the work is being one has to board the men. The rate per hour for the use of the machine varies from \$1.75 to \$2, and possibly this year to \$2.25 or more.

4. We cannot give accurate information on this point. In some sections the value of land has increased considerably, while in others it has decreased.

5. The market quotations on straw are around \$8 per ton, car lots. There would be considerable expense in drawing the straw to the market, which of necessity would have to be deducted before the actual value of the straw could be determined.

6. The wording of the agreement would have to be followed. However, if A has made all the payments except the last one, B could afford to be a little lenient and extend the time limit somewhat.



BOB LONG
UNION MADE
OVERALLS
SHIRTS & GLOVES
Known from Coast to Coast
R. G. LONG & CO., LIMITED
TORONTO CANADA

Inspect These Bonds Before You Buy

If you think you would like to buy one or more Victory Bonds, cut out and mail us this advertisement, after first checking off amount of bond, or bonds you would like to invest in. We will send the bonds to you at your local bank, where you may inspect them before making payment. Then, if you decide to invest you may pay for them through your local bank without extra charge or exchange on cheque.

There's no reason why anybody should keep money to which they have no immediate use drawing an interest, or drawing only 3% interest, when he or she can invest it in Victory Bonds and obtain 5 1/4% to 5 3/4% interest.

And, remember, Victory Bonds are readily saleable and Free of Federal Income Tax.

You can buy Victory Bonds at the following prices:

\$1,000 costs.....	\$995.00
500 costs.....	497.50
100 costs.....	99.50
50 costs.....	49.75
and accrued interest.	

Larger amounts \$995 per 1,000. Interest which is payable every six months at all banks, commences from date of your investment, so write us to-day—or we will hold the bonds for you to be delivered the first of the month.

Graham, Sanson & Co.
INVESTMENT BANKERS

Toronto General Trusts Building,
Toronto



Advertisements will be inserted under this heading, such as Farm Properties, Help and Situations Wanted and Pet Stock.

TERMS—Three cents per word each insertion. Each initial counts for one word and figures for two words. Names and addresses are counted. Cash must always accompany the order. No advertisement inserted for less than 50 cents.

FATHER AND SON DESIRE SITUATION—Experienced in all kinds of farm work; good milkers; able to manage. Apply Box 4, Farmer's Advocate, London, Ont.

SCOTCH COLLIE PUPPIES FOR SALE. Guaranteed heifers. Price \$5.00. A. T. MacPherson, R. R. 1, Wilton Grove, Ont.

WANTED BY A PRACTICAL DAIRY farmer (married) a position by October, working and managing first-class dairy farm. Would work on shares. Apply Box R, Farmer's Advocate, London, Ont.

WANTED—A WOMAN MANAGER FOR small farm in connection with Girls' Educational Institution. Practical knowledge of Dairying, Poultry and Horticulture. A teaching knowledge of Domestic Science preferred. Correspondence solicited. Apply P. O. Box 461, Sherbrooke, P. Que.

How Ma Felt.—Willie.—"Paw, why do women cry at a wedding?"

Maw.—"Because they have been married themselves, my son."

Paw.—"You better keep your mouth shut, young man."