

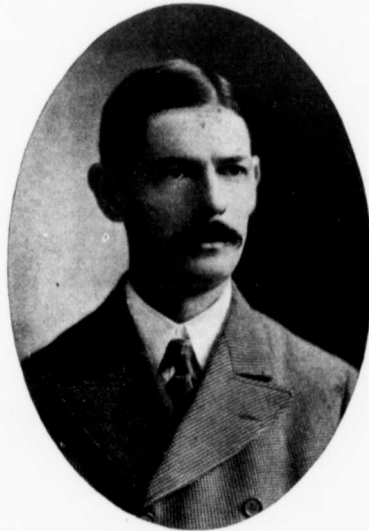
chief title to fame was that he could make articles upon political economy interesting. But what shall we say of a publication which can derive a literary and artistic triumph from the cost sheets of a manufactory. To read the *Engineering Magazine* is to realize that an industrial civilization need not necessarily be contrasted with every other kind of civilization and with the common meaning of the word itself.

TRADE NOTICES.

E. P. ALLIS CO.

THE consolidation of the branch office of the Edward P. Allis Company at Butte, Mont., with that at Spokane, Wash., brings to the service of the company's patrons in the Northwest and British Columbia Mr. H. V. Croll as local manager. Mr. Croll is essentially a mechanical and mining engineer; but the office will be prepared to take care of all business and inquiries relating to the various lines of machinery manufactured by the company.

This branch office, located at 110 Mill street, will be equipped to handle the entire business of the com-



Mr. H. V. Croll.

pany which comprises flour mills and their equipments, mining machinery, engines and power plants, also saw mill machinery. Mr. Croll informs us that owing to the vast amount of business the company has been compelled to turn away owing to its inability to make quick deliveries during the past three years, the company has purchased a tract of land of 100 acres just outside of Milwaukee where a new plant of the most modern type will be erected and when completed will have a capacity for employing 10,000 men, and take rank among the largest and most complete institutions of its kind in the world.

The completion of the new plant will be pushed with all the speed possible and it is expected that by June of 1901 the company will be shipping machinery from the new plant.

The Edward P. Allis Co. furnished all the machin-

ery for the smelting plant of the British Columbia Copper Co., now nearing completion at Greenwood, B.C.

A. LESCHEN & SONS ROPE CO.

A Leschen & Sons Rope Co. (whose main office is at 920-922 North Main street, St. Louis, Mo.) has arranged to open a New York office and warehouse at 92 Centre street (corner of Leonard street), New York City, where they will carry a full and complete stock of wire rope and be prepared to make prompt shipments.

This house is the owner and manufacturer of the Leschen Company's Patent Aerial Wire Rope Tramway, an outfit which is used for the transportation of ore, rock, dirt, timber, etc., not only over mountainous, but also over level country. Among several of the principal features of this particular type of tramway is the fact that it loads and unloads automatically, can be operated by one man and the cost of maintenance is infinitesimal, and it is a tramway which has the greatest possible capacity.

COLORADO IRON WORKS COMPANY.

The Colorado Iron Works Company of Denver, Colorado, publishes a neat little hand book illustrating the new metal top Bartlett concentrator to which are added a few practical notes on mill practice and general mill data.

THE TRENTON IRON COMPANY.

The Trenton Iron Company, of Trenton, New Jersey, U.S.A., publishes a tasteful pamphlet on "Wire Rope and its application to the Transmission of Power, etc." It is of a technical character and gives a number of useful tables and formula.

THE JEFFREY MANUFACTURING CO.

We are in receipt of a special illustrated catalogue and price list from the Jeffrey Manufacturing Co., of Columbus, Ohio., U.S.A., dealing with chain belting and steel cable elevating and conveying machinery for the sawmill, lumber and wood-working industries.

MINING RETURNS AND STATISTICS.

COAST.

THE output of the Van Anda mines for 1900 was 7,054 tons, an increase of over 100 per cent. on 1899.

The Marble May mines during November and December shipped 900 tons.

SLOCAN.

Since January 1 to January 19, 1901, the shipments from Slocan and Slocan City Mining Division have been as follows:

	Week.	Total.
Payne	67	384
Last Chance	58	129
Slocan Star	60
Ruth	39
Bosun	40	80
Hewett	90	260
American Boy	35
Ivanhoe	43	63
Trade Dollar	42
Sovereign	15	37
Wonderful	4
Arlington	90	190
Two Friends	40
Enterprise	20	20