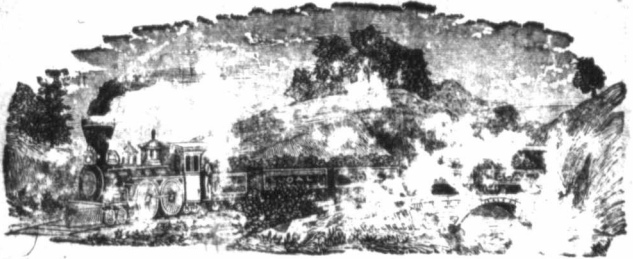


FOR HAPPINESS SEE PAGE 447.

BOWMAN & CO.

WHOLESALE AND RETAIL DEALERS IN



COAL, WOOD, COKE, SEWER PIPE, ETC.

BEST SCRANTON ANTHRACITE.

Grate, Egg, Stove, Chestnut and Pea Size.

Celebrated Brier Hill for Grates.

Also Steam Coal via rail or vessel to all points. Sunday Creek, Hocking, Rengoldsville, etc. Also Blossburg, Lehigh and Cokes. Vitrified Salt Glazed Tile, Fire Brick and Clay.

Yards: 246 Bathurst. City Office: Edge Block, 402 Richmond.

PROMPT ATTENTION! LOWEST PRICES!

THE ONTARIO

LOAN & DEBENTURE CO.

LONDON, - ONTARIO.

Subscribed Capital,	-	-	\$2,000,000
Paid-Up	"	-	1,200,000
Reserve Fund,	-	-	285,000

This Company are receiving large amounts of ENGLISH CAPITAL for investment in good mortgage security, at Reasonable Rates.

STRAIGHT LOANS.

Mortgages and Debentures purchased.

SAVINGS BANK BRANCH.--Interest allowed on Deposits.

WM. F. BULLEN, Manager.

THE LIVERPOOL & LONDON & GLOBE INSURANCE CO. ASSETS, \$34,500,000
A. G. SMYTH AND EDWARD TOWE, AGENTS, LONDON.

"NEW WILLIAMS," FESSENDEN BROS.,
233 DUNDAS STREET. (See Adv. page 80.)