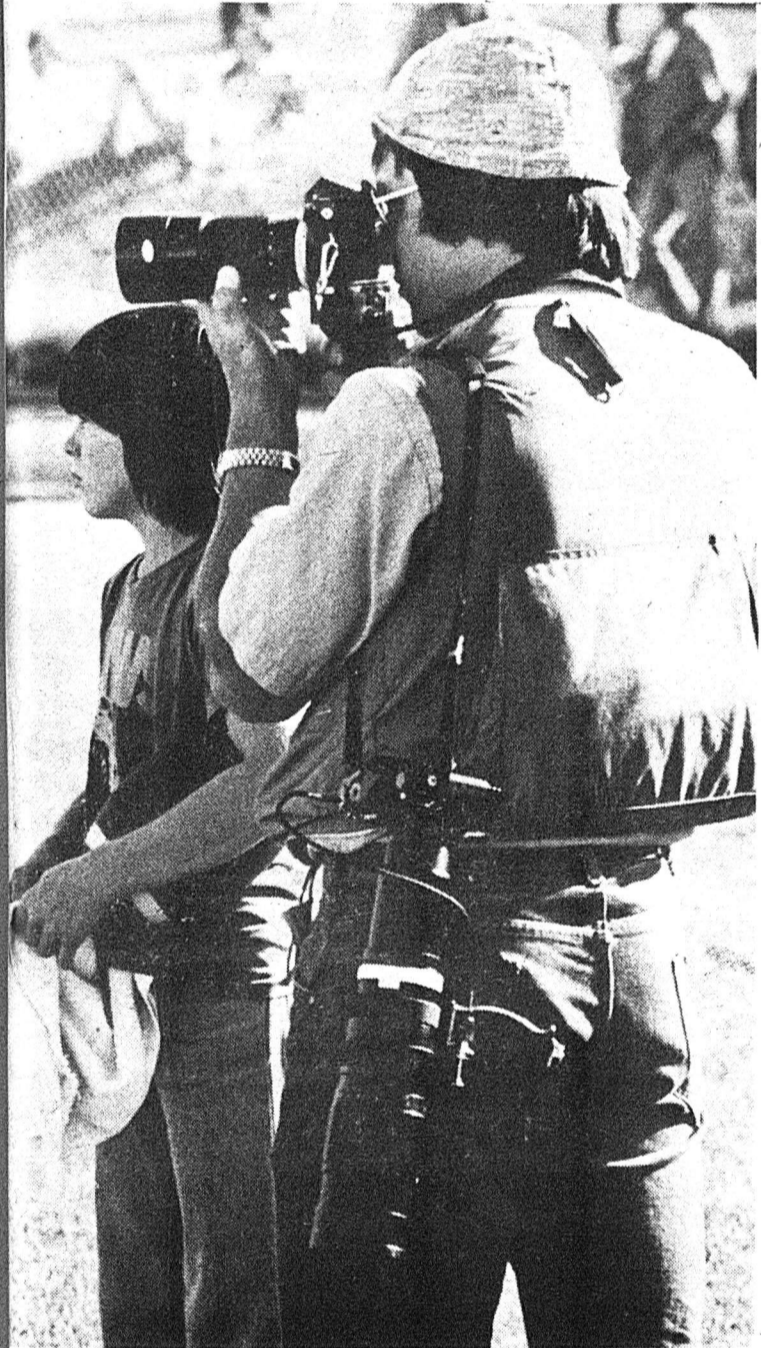
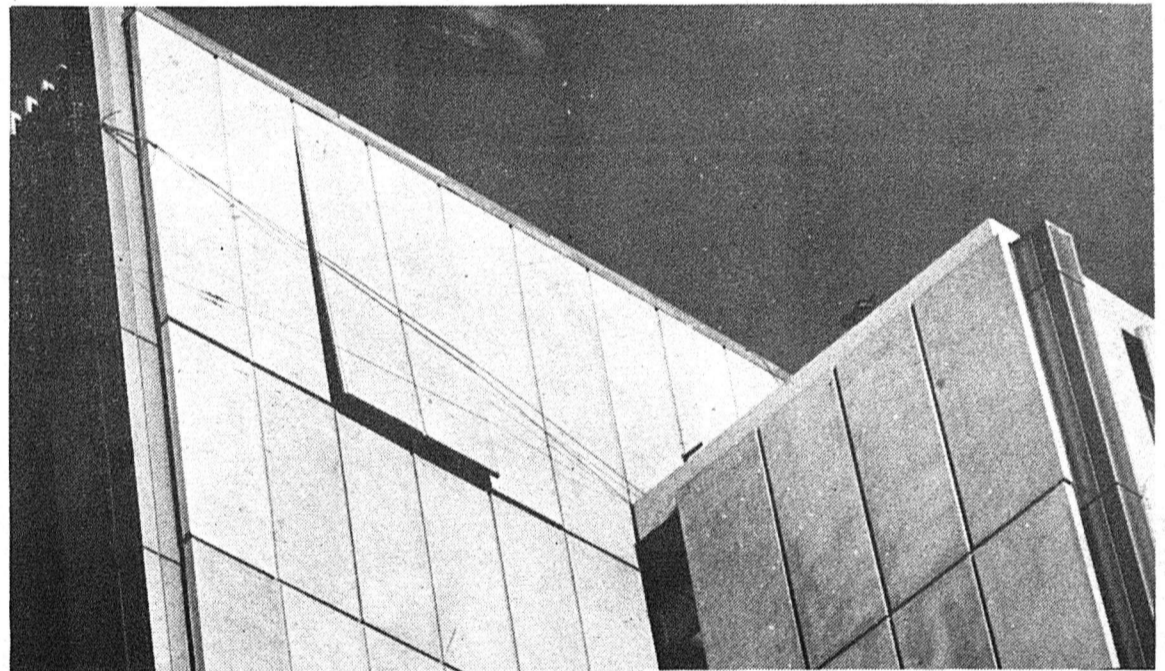


Gateway work can be a pain, but there are consolations — here first term arts editor Beno John chats with poet Al Purday.

Timothy Gosley (right) points a snide, accusing finger in his leading role in Studio Theatre's superb production of *Richard III*.



Exhibiting all the trappings of a well-hung photojournalist, Gateway photog. Brian Gavriloff leans on the motor drive to catch a string of shots of Golden Bears football.



The wind blew and the concrete waved. Clinical Sciences Building concrete panels flap in the breeze (above right) as workers blocking off the street below hold-down barricades against the 90 kph gusts.