



# TROUT FISHING

The season opens May 1st. and it is not too early to plan a Spring fishing trip—commence by securing copy of 1910 "Fishing and Shooting," *Sportsman's Map* and literature descriptive of Canada's fishing grounds best reached by the Canadian Pacific Railway.

Write for Illustrated Literature and all Information to

**R. L. Thompson, District Passenger Agent, Toronto**



**T**HE particular type of Russell you buy has no bearing on the quality. We make no low grade cars at any price and the result is that though you pay up to \$5,000 or as low as \$2,200 you will get as fine a car as can be made in America or Europe for the money. The great range of styles, with their different capacities, the different sizes and the range of power in the engines enables you to suit yourself exactly with one model or another.

Call at our nearest branch for a free demonstration. Look at any other cars if you like but don't decide till you see the Russell. Get the catalogue.

**Prices:**  
**\$2,200**  
**to**  
**\$5,000**

Standard construction, including shaft drive, selective transmission, metal-to-metal clutch, floating type of rear axle, etc.

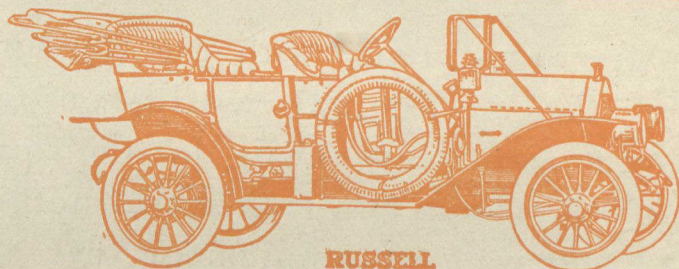
The Russell has made Canada's reputation among the automobile-building countries of the world. Have you realized what this car is? Have you realized what speed, power, comfort and style all mean as interpreted by the Russell car? There is a difference—a big difference.

## CANADA CYCLE & MOTOR CO., Limited

Makers of High Grade Automobiles

WEST TORONTO

Branches: Toronto, Hamilton, Montreal, Winnipeg, Vancouver, Calgary, Melbourne Aust.



RUSSELL

# YOUR PLANS FOR NEXT SUMMER



should include at least one trip through Canadian Northern territory. The railways of the Canadian Northern System traverse the finest summering country in six provinces—from the ocean shore of Nova Scotia to the foot-hills of the Rockies. **HERE IS A CHOICE---**  
**IN ONTARIO**—Sparrow Lake, Lake Couchiching, the entire range of the Muskoka Lakes, Georgian Bay, and the newest fishing territory in Ontario—the Georgian Bay Hinterland.  
**IN QUEBEC**—The Ottawa and St. Lawrence Valleys, the Laurentians, the Upper St. Maurice, Lake Edward, Lake St. John, Lake St. Joseph and the Saguenay.  
**IN NOVA SCOTIA**—The Ocean Shore from Halifax to Yarmouth, Lake Rossignol, the Annapolis Valley, and the Gulf of St. Lawrence side of Cape Breton Island.  
**IN THE WEST**—The Superior Divide (Port Arthur to Lake of the Woods), the rivers, lakes, woods of Manitoba, and beyond the Saskatchewan up to Edmonton.

Inquiries to Information Bureau, Canadian Northern Railway System, Toronto, Ont.



# The Pioneer Route to MUSKOKA

AND THE ONLY LINE REACHING ALL THE PRINCIPAL TOURIST RESORTS OF ONTARIO.

For Descriptive and Fully Illustrated Literature Regarding:---  
**MUSKOKA, LAKE OF BAYS, TEMAGAMI, ALGONQUIN PARK, GEORGIAN BAY, KAWARTHA LAKES, ORILLIA AND LAKE COUCHICHING, LAKE HURON, Etc., address---**

**J. D. McDONALD, D.P.A.**  
Toronto

**J. QUINLAN, D.P.A.**  
Montreal

## TOURIST AND SUMMER RESORT INFORMATION BUREAU

WHETHER you are a subscriber to the **CANADIAN COURIER** or not, our Information Bureau is at your service. On application we will furnish information concerning Summer Resorts, Summer Hotels and Boarding Houses, also Trips by Land and Water to any part of the Dominion. Address

INFORMATION BUREAU, COURIER PRESS, LTD  
 12 WELLINGTON ST. EAST, TORONTO, ONT.

Please enclose stamped envelope for reply.

## ARE YOU

on the list for a copy of

# "Tours to Summer Haunts"

describing

Canadian  
Tours

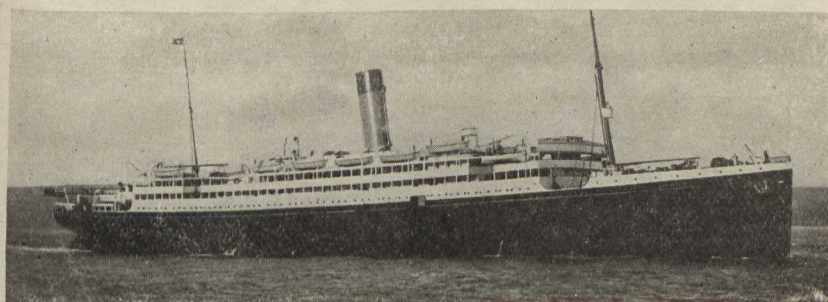
to

Canadian  
Resorts

# BY THE SEA

in Quebec, New Brunswick, Nova Scotia, Prince Edward Island.

Write Advertising Dept Intercolonial Railway, Moncton, N. B.



## WHITE-STAR DOMINION CANADIAN SERVICE ROYAL MAIL STEAMERS

1910 — WEEKLY SAILINGS — 1910

<b>R. M. S. "LAURENTIC"</b>	<b>R. M. S. "MEGANTIC"</b>
14,892 Tons Triple Screw	14,878 Tons Twin Screw

The largest and most modern Steamers on the St. Lawrence route

**H. G. THORLEY, Passenger Agent - - 41 King Street East, TORONTO**