



FROM TWO TO SEVENTY-FOUR.

This interesting group were photographed on the occasion of the sixtieth anniversary of the wedding of Mr. and Mrs. Henry Cronmiller of Port Colborne. In the sixty years the family has grown from two to seventy-four, and on this occasion there no less than seventy-one present—parents, children, grand-children and great grand-children.



AN IRISH SETTER IN HIS SPEED WAGON.



CONDUCTING AN ORCHESTRA.

## An Added Touch of Refinement in Electric Fixtures is Assured if You Inspect Ours



An otherwise palatial home will appear to disadvantage if the fixtures are crude.

SEE OUR FIXTURES—LOOK AT THE OTHERS—  
WHEN YOU HAVE COMPARED THEM

**YOU WILL BUY HERE**

AND THE TRANSFORMATION WILL BE  
WONDERFUL

You pay nothing extra for the combined skill and art embodied in our output.

Study our window and our warerooms for ideas.

We have the very latest Novelties in Fixtures in the most exquisite designs for Drawing-Rooms, Dining-Rooms, Sleeping Chambers, etc.

Recherche Figures for Halls and Reception Rooms

We will be pleased to inspect your house and offer suggestions for the entire equipment. Our experts will be glad to tender the benefit of their experience.

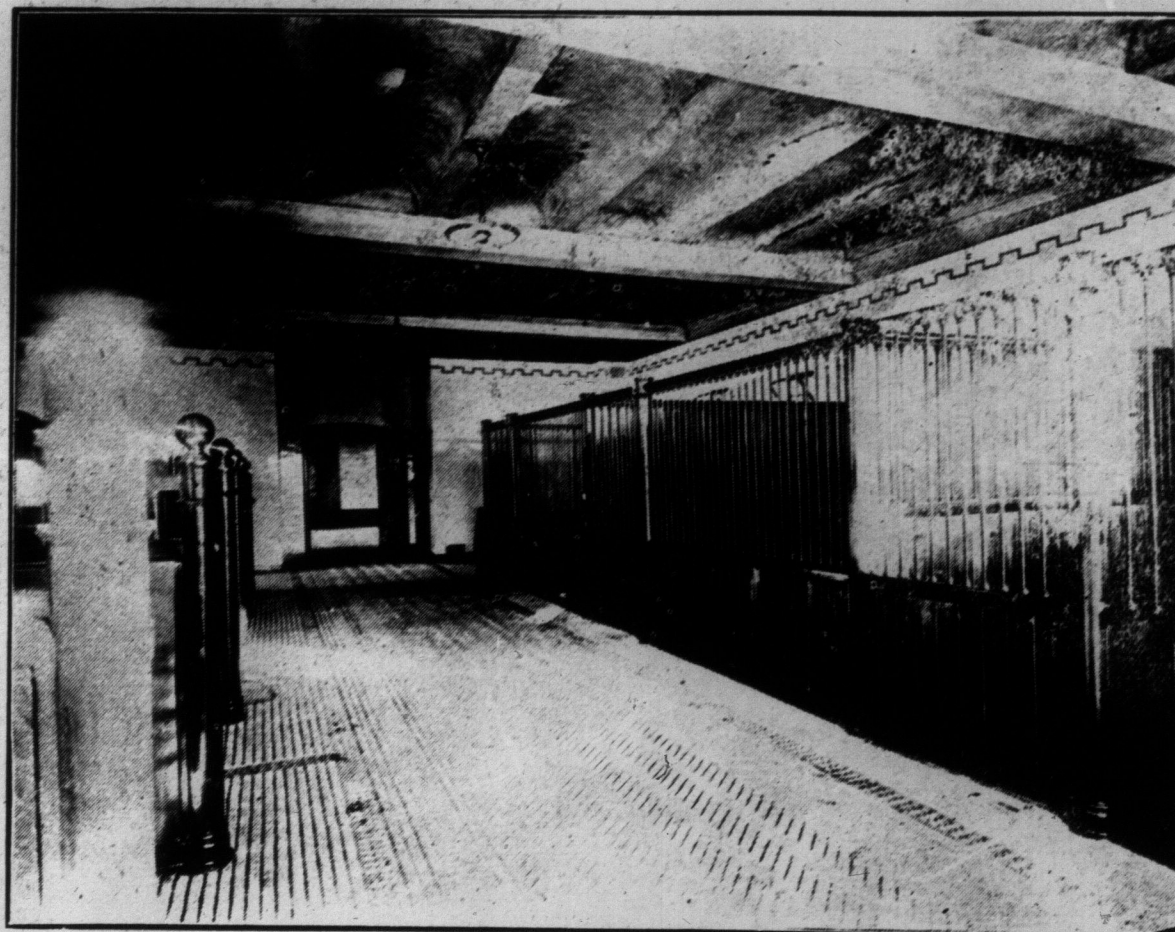
BUY DIRECT  
FROM THE  
MANUFACTURERS

**MORDEN AND COMPANY**

**80 KING STREET WEST**

Main 7446—North 2434

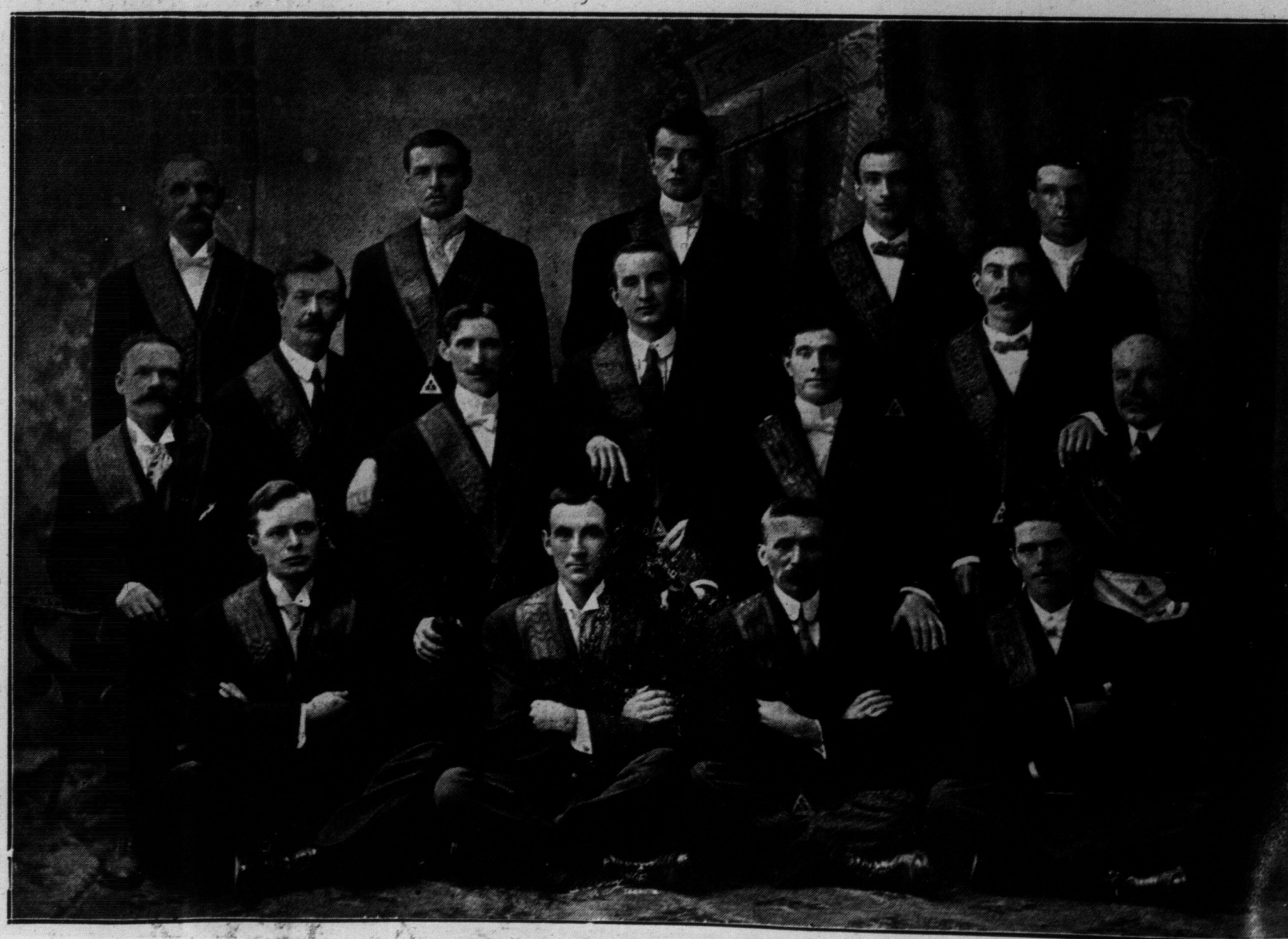
WE SELL  
WHOLESALE and  
RETAIL



INTERIOR OF SIR HENRY PELLATT'S STABLES.



JOHN BURNS, MEMBER FOR BATTERSEA, FORGETTING POLITICS FOR THE MOMENT AND MAKING FRIENDS WITH A LITTLE PATIENT AT THE PARK HOSPITAL WHICH HE INAUGURATED RECENTLY.



OFFICERS OF MAPLE LEAF R.B.P. NO. 327, R.B.K.I.

Front row: J. Wes. Benson, W. Taylor, J. Buie, W. R. Meenah. Second row: Benj. Little, W. McGeagh, W. C. Reid, A. Weir, J. Warren, Wm. Lockhart, W. W. Ward. Top row: John Stanley, D. H. Crawford, S. J. Jackson, R. J. McMurray, R. Steele.