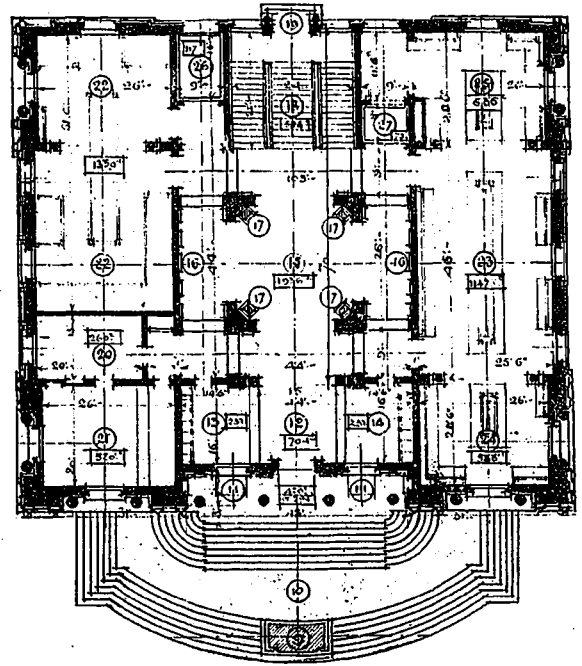


BASEMENT PLAN.

1.—Main Stairway. 2.—East Exit. 3.—Vestibule. 4.—Small Room for Records. 5.—Spare Collection and Stores. 6.—Repair and Storerooms. 7.—Ladies' Lavatory (Staff). 8.—Ladies' Lavatory (Public). 9.—Vaults. 10.—Elevators. 11.—Store Room. 12.—Engine. 13.—Elevator for Public. 14.—Men's Lavatory (Staff). 15.—Men's Lavatory (Public). 16.—English Court with Drainage. 17.—Infrastructure Main Stairway and Statuary Group.

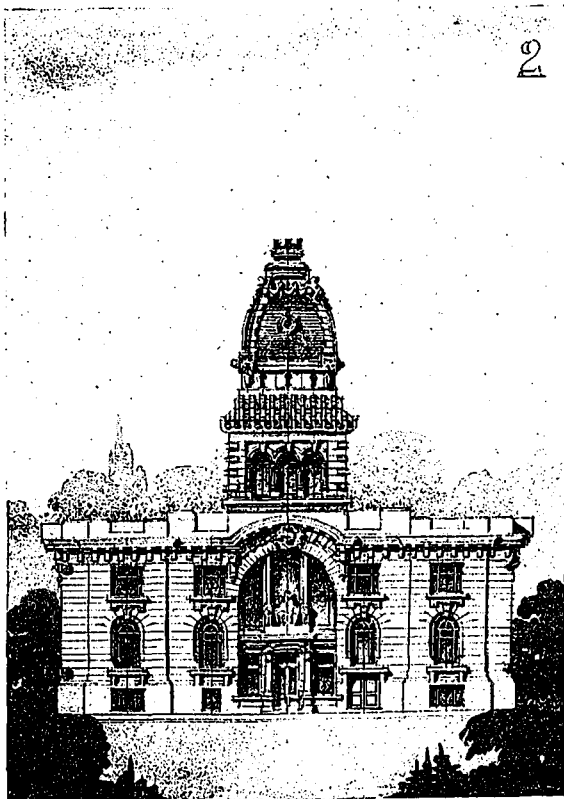
Provincial Museum, which are themselves of secondary importance. It will be noted that the general arrangement of stairs and rooms provides for the proper circulation of visitors, as required in a museum. One can make a com-



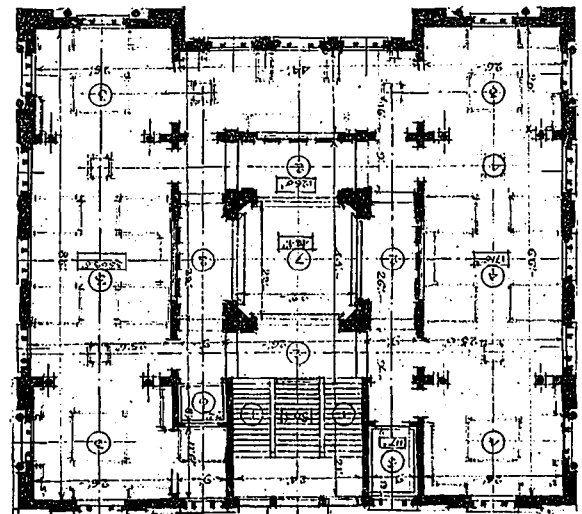
GROUND FLOOR PLAN.

9.—Statuary Group. 10.—Main Entrance Staircase. 11.—Portico. 12.—Vestibule. 13.—Cloak Room. 14.—Photograph Exhibit Room. 15.—Hall of Honor. 16.—Bronze Tablets (Honor Roll). 17.—Busts. 18.—Main Stairway. 19.—East Exit. 20 and 21.—Curator's Offices. 22.—Zoology. 23.—Ornithology. 24.—Entomology. 25.—Botany. 26.—Elevator. 27.—Public Elevator

plete circuit of all rooms on both floors without retracing one's steps, thus according new notes of interest as the intercommunicating rooms are



EAST ELEVATION.



FIRST FLOOR PLAN.

1.—Main Stairway. 2.—Vestibule. 3.—War Relic Museum. 4.—Ethnology and History. 5.—Elevators. 6.—Public Elevator. 7.—Upper Centre of Hall of Honor.

COMPETITIVE DESIGN, WAR MEMORIAL MUSEUM, REGINA, SASK.

EMIL DELAY, ARCHITECT.

traversed and interesting views of the main rooms from cross-connecting corridors.

It was accepted that the side lights would be preferable to top lights for the Museum, and in