

ONE hiring a lodging said to the landlady, "I assure you, madam, I am so much liked that I never left a lodging but my landlady shed tears." "Perhaps," said she, "you always went away without paying?"

WHEN two men look round at each other in the street each feels as mean as if he had been sheep-stealing. It is different with women. Two of the sex will turn square around after they have passed each other, take an upward survey of each article of attire worn by the other, slowly and critically, until their eyes meet, when a cold stare will be exchanged, and then both will start on their several ways looking as sweet as roses in June.

OUR CHESS COLUMN.

Solutions to Problems sent in by Correspondents will be duly acknowledged.

TO CORRESPONDENTS.

J. W. S., Montreal.—Letter received; much obliged, also, correct solution of Problem No. 166.

Student, Montreal.—Correct solution of Problem No. 166 received.

G. B. S., Arkona, Ont.—Correct solution of Problem No. 165 received. Many thanks for the other communication. We have inserted it, as you will perceive.

J. S., St. Andrews, Manitoba.—Correct solution of Problem No. 162 received.

Saxon, Montreal.—Solution of Problem for Young Players No. 164 received. Correct.

E. H., Montreal.—Solution of Problem for Young Players No. 164 received. Correct.

The Canadian Chess Correspondence Tourney is progressing most satisfactorily. The Conductor, J. W. Shaw, Esq., has nearly completed his list, and already some of the competitors have received the names of their first opponents, and are actively engaged in the friendly struggle.

We have no hesitation in saying that, in all respects, whether as regards the number of competitors, the value of the prizes, or the mode of organization, this Tourney will bear favourable comparison with any contest of a similar nature at present engaging the attention of Chess-players.

We have to congratulate the Chess-players of Arkona, Ont., on the establishment of their Club, and the following list will give the names of the office-bearers for the current year:

- G. B. Stephenson, President.
G. M. Everest, 1st. Vice-President.
John T. Vetter, 2nd.
George Dunn, Treasurer.
Wm. M. Brott, Secretary.

A Committee has also been appointed.

(From Level and Water.)

A Chess event of a somewhat unique character is to take place at Moulton's Hotel, on Saturday, the 10th inst., viz., a public blindfold exhibition, by Mr. Blackburne. He proposes, it appears, to invite the local metropolitan Chess clubs to send each one of their members against him, to the number of eight altogether. Naturally, each association will select the strongest player it can find willing to uphold its honour, and in this way an unusual interest will be imparted to the performance. Another feature will be the gathering together of members from the various Clubs to witness the efforts of their respective champions. The project, though of course standing upon its trial as a novelty, seems to us to have the elements of success.

Some narrow-minded critics think that Mrs. Gilbert is not properly matched in the International Correspondence Tourney. Fudge! who better than a lady can appreciate a lively Gossip!—Hannibal Herald.

We have just had the pleasure of looking over one of the latest numbers of the French Chess Journal, La Strategie. This periodical, which is the leading Chess magazine in France, is full of interesting matter.

The games published are chiefly connected with a match played two years ago at St. Petersburg, and a late consultation encounter at New York. There is also the score of the game which obtained the prize for brilliancy at the late Grantham Tourney.

The details of a blind-fold match played by M. Rosenthal, at Paris, against eight antagonists, is well worth attention, but we have not space for the particulars.

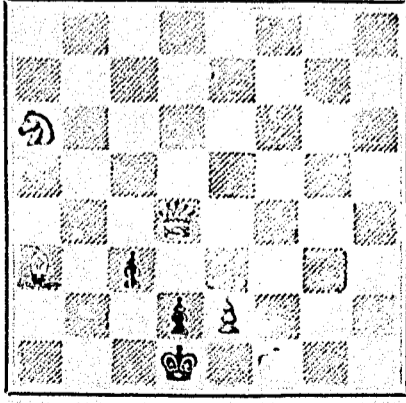
Important intelligence is promised in the following number respecting the International Congress which is to take place at Paris this year during the time of the great Exhibition.

It is with much regret that we read in the latest Chess news from Europe that the eminent player, Mr. J. Cochrane, died in London at the beginning of the present month. From the full accounts of his Chess career which have come to hand, we hope to be able to select a few particulars for our Column next week.

PROBLEM No. 168.

By THOMAS SINCLAIR, St. Andrew's, Manitoba.

BLACK.



WHITE. White to play and mate in three moves.

CHESS IN ENGLAND.

(From the Westminster Papers.)

GAME 251ST.

One of a few played at Bath between Mr. Thorold and Professor Wayte in December last. The results were very even, Mr. Thorold scoring the odd game.

(King's Bishop's Opening.)

- WHITE. Mr. THOROLD. 1. P to K4, 2. B to B4, 3. Q to K2, 4. P to Q B3, 5. P to Q3, 6. B to K Kt5, 7. B to R4, 8. B to K Kt3, 9. P to K R4, 10. Kt to Q2, 11. P to B4, 12. P takes P, 13. Castles, 14. P to Q4, 15. Q takes Kt, 16. P takes P, 17. P to K5, 18. Kt to K2, 19. Kt to Q B3, 20. K R to B sq, 21. P to Q5, 22. Q Kt to K4, 23. P to Q B (d), 24. Kt to Q5, 25. Q Kt to B3, 26. Q to Kt3, 27. P takes P, 28. K to Kt sq, 29. Kt takes B (f), 30. B to K B2, 31. P takes R, 32. Q to Kt6, 33. K to R sq, 34. B takes Q, 35. R takes P, 36. R takes Kt and wins.

NOTES.

- (a) Rarely good at so early a stage, 7 Q to K2 appears best.
(b) This unusual looking move is justifiable, and perhaps necessary, as White threatens Kt to Kt3.
(c) The Pawn should have been taken first in my opinion. I do not find that either 15 P to K5, or 15 P takes P is so dangerous as it seems.
(d) This dashing advance brings on a highly interesting and very complicated position wherefrom White emerges, and so far as I have seen, deserves to emerge with the better game.
(e) If he takes the Pawn, the reply is Kt to Kt6, winning the exchange.
(f) Strongly played and lassoing victory.
(g) Professor Wayte, by checking at K5 could win back the exchange, but not with any good results, e. g.

- 32. K to R sq, 33. Q to Kt6, 34. R takes B, 35. Q to R7 ch, 36. Q to R8 ch, 37. Q takes P ch, 38. P to Q7 ch, or R to K sq.
31. Q to K5 ch, 32. B to R5, 33. B takes R, 34. Q to K7, 35. K to B sq, 36. K to Q2, 37. K to K sq (Q sq no better).

There are of course other lines of play, but White wins in all of them.

(h) The game is gone, but this advances the result. Kt to K5 seems his best.

SOLUTIONS.

Solution of Problem No. 166.

- WHITE. 1. K to R6, 2. R to K7, 3. R to K8 mates.
BLACK. 1. K to K3, 2. K takes B.
There are other defenses.

Solution of Problem for Young Players No. 164.

- WHITE. 1. B to Q Kt5 ch, 2. P to Q Kt6, 3. R to Q6, 4. R mates.
BLACK. 1. K takes B (best), 2. K to B sq, 3. K moves.

PROBLEMS FOR YOUNG PLAYERS NO. 165.

- WHITE. K at Q R2, Q at K B2, B at K B2, Pawn at Q Kt3.
BLACK. K at Q Kt4, R at Q B3, Pawns at Q R3 and Q Kt3.
White to play and mate in three moves.

D. MORRICE & CO.,

Ice Dealers,

24 VICTORIA SQUARE.

Prompt Delivery and Pure Ice.

THE WONDER OF THE AGE IS THE CHAMPION WASHER.

Try it, and you will never be without it.



PRICE ONLY 35.00. It is the cheapest and most perfect Washer in the market. It is easily installed, does not wear the clothes, or break buttons. Never gets out of order, and fits any tub. Is selling by thousands. Agents wanted. Manufactured by STOCKTON, ROSSITER & Co., 122 King Street West Toronto. All kinds of Wringers on hand. Montreal branch office, 17 1/2 Beaver Hall. S. S. Baker, Manager.

SHOP TO LET.

A nice SHOP to let, Heated by Steam, in the Building of the Burland-Desbarats Company.

Apply to G. B. BURLAND, Manager, 5 & 7 Bleury Street.

THE MOST WONDERFUL INVENTION OF ANY AGE IS MASON'S CHART. Would you not like to play upon the Piano or the Organ? This most elegant of all accomplishments can be learned in one day. This is no humbug, the highest Musical Authority in the World endorses it and Press of Europe and America is enthusiastic in its praise.

MORSON & SON'S PREPARATIONS OF PEPSINE FOR INDIGESTION. Highly recommended by the Medical Profession. PEPSINE POWDER, in 1 oz. Bottles, 4s. per oz. PEPSINE WINE, at 3s. 5s., and 9s. per Bottle. PEPSINE LOZENGES, at 2s. 6d. and 4s. 6d. per Bottle. PEPSINE GLOBULES, at 2s. 3s. 6d., and 6s. 6d. per Bottle. SOLD BY ALL CHEMISTS AND THE MANUFACTURERS, T. MORSON & SON, SOUTHAMPTON ROW, RUSSELL SQUARE, LONDON.

British American BANK NOTE COMPANY, MONTREAL. Incorporated by Letters Patent. Capital \$100,000. General Engravers & Printers.

Bank Notes, Bonds, Postage, Bill & Law Stamps, Revenue Stamps, Bills of Exchange, DRAFTS, DEPOSIT RECEIPTS, Promissory Notes, &c., &c., Executed in the Best Style of Steel Plate Engraving. Portraits a Specialty. G. B. BURLAND, President & Manager.

THE COOK'S FRIEND BAKING POWDER. Has become a HOUSEHOLD WORD in the land, and is a HOUSEHOLD NECESSITY. In every family where Economy and Health are studied. It is used for raising all kinds of Bread, Rolls, Pancakes, Griddle Cakes, &c., &c., and a small quantity used in Pie Crust, Puddings, or other Pastry, will save half the usual shortening, and make the food more digestible.

THE COOK'S FRIEND. SAVES TIME. IT SAVES TEMPER. IT SAVES MONEY. For sale by storekeepers throughout the Dominion and wholesale by the manufacturer. W. D. MCLAREN, UNION MILLS, 15 1/2-249 55 College Street.

TO LET. One of those comfortable medium-sized STONE HOUSES, No. 39, Lorne Avenue. Rent low to a good tenant. —ALSO— several rooms, suitable for WORKSHOPS or OFFICES. Corner of Craig and Bleury Streets. Apply to G. B. BURLAND, Burland-Desbarats Lith. Co., 5 & 7 Bleury Street.

SUMMER COMPLAINT, WEAK BACK, RHEUMATISM and SEXUAL EXHAUSTION, immediately relieved and permanently cured by using IMPROVED GALVANO-ELECTRIC BELTS. Circular free. A. NORMAN, 16-25-46 4 Queen Street, Toronto. DYSPEPSIA, LIVER COMPLAINT, and all DISEASES OF THE BLOOD and SKIN radically cured by using NERVEN-THE BITTERS. Ask for NERVEN-THE BITTERS, take another, and you will obtain immediate relief. 16-25-46-266.

NOTICE TO THE PUBLIC. CANADIAN MECHANICS' MAGAZINE AND PATENT OFFICE RECORD. This VALUABLE MONTHLY MAGAZINE has been much improved during the past year, and now embodies within its pages the most Recent and Useful information published connected with Science and the different branches of Mechanical Trades, selected with particular care, for the information and instruction of Mechanics in Canada. A portion of its columns is devoted to instructive reading, suitable for the younger members of a family, of either sex, under the title of the ILLUSTRATED FAMILY FRIEND, SUCH AS FLORAL CULTURE, NATURAL HISTORY, POPULAR GAMES AND AMUSEMENTS, LADIES' FANCY AND NEEDLE WORK, AND SHORT PLEASING STORIES, ALSO SELECTED NEW MUSIC, DOMESTIC RECEIPTS, &c. The Canadian Mechanics' Magazine, with the addition of the Illustrated Family Friend AND PATENT OFFICE RECORD, Contains 16 full pages of Superior Illustrations and about 125 diagrams of all the Patents issued each month in Canada; it is a work that merits the support of every Mechanic in the Dominion, whose motto should always be "SUPPORT HOME INDUSTRY." Price, only \$2.00 per annum. BURLAND-DESBARATS LITH. CO., PROPRIETORS AND PUBLISHERS, 5 and 7 BLEURY STREET, MONTREAL. P. N. BOXER, Architect.

CHEAPEST AND BEST. DAILY WITNESS, MONTREAL WITNESS, WEEKLY WITNESS, CANADIAN MESSENGER, NEW DOMINION, MONTHLY. JOHN DOUGALL & SON, 218 and 220, St. James Street, Montreal. Electrotyping and Job Printing, Chromatic and Plain.