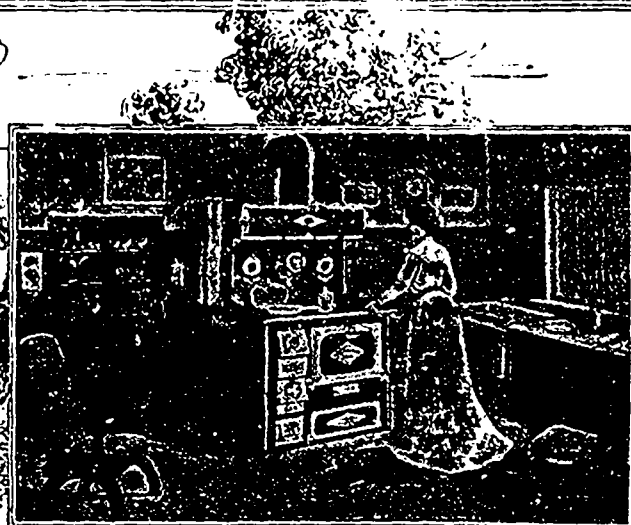
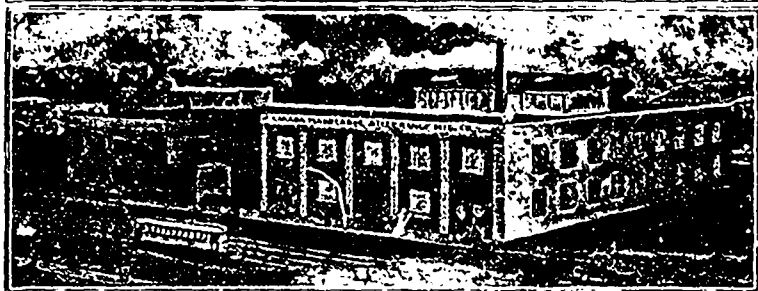


**DIRECT from FACTORY to KITCHEN****SAYES all MIDDLEMENS PROFITS****The "Dominion Pride" Range**

is placed on the market in response to a demand for a Range combining the sterling qualities of Malleable Iron and Steel, practically indestructible, air-tight without cementing, perfect cookers and bakers, most economical on fuel, design attractive, artistic finish, and the best modern improvements. Will last a lifetime with proper care.

**THE "DOMINION PRIDE" RANGE**

is made of the best Blue Polished Steel and Malleable Iron. Polished Steel requires no black lead or Japan, and has the best finish, appearance, and easiest to keep clean. The occasional application of a cloth to the polished steel causes it to appear clean and bright and retains all of its original blue lustre. Malleable Iron will not warp, crack or break like cast iron. Malleable Iron has been universally adopted by railroads for car castings, by agricultural implement manufacturers for machines, on account of its great strength and durability, and is surely and rapidly growing in favor for range construction. This is most natural, as it is the only material of which a perfect cooking apparatus can be made. The time is coming when the public will have nothing else. It is inevitable, as this construction is the most practicable and enduring.

**PRICE**

Why not buy direct from the Manufacturer and save the Middlemen and Retailer's profit? "DOMINION'S PRIDE" Range, if sold through the retailer or travelling salesman, would have to be sold for \$69.00 cash. Our price direct to the consumer as follows "DOMINION PRIDE" Range 818 or 918 with high closet shelf and elevated tank, with piece of Zinc to go underneath range, 8 joints of blue polished steel pipe and two elbows, delivered to any railway station in Ontario, Quebec, New Brunswick, Prince Edward Island and Nova Scotia for \$39.00 cash. We pay the freight, \$5.00 to accompany any order, balance to be paid when range is delivered to you. Range without the elevated tank, \$5.00 less; Waterfronts for pressure boiler, \$3.50

**GUARANTEE**

"DOMINION PRIDE" Ranges are sold on the following Guarantee: If any casting prove defective in twelve months from date of purchase, we will furnish same free of charge. The above Guarantee is very broad no "ifs" or "ands" and any casting that would have a flaw in it that we failed to see in the course of construction, such flaw would show long before the twelve months have transpired when fire is put in range.

**INCOMPARABLE OFFER**

Our placing direct to the consumer our High Grade "DOMINION PRIDE" Malleable and Polished Steel Range, as fully described in our descriptive circular and guaranteed for less than you can buy a cast iron range. We are enabled to make this extraordinary offer by our DIRECT from FACTORY to KITCHEN PLAN which saves the jobbers, retailers, travelling salesmen and their expenses, giving the consumer the benefit of these savings, which in reality enables the consumer to buy as cheap as the wholesale jobber.

**OVER 5,000 OF OUR RANGES IN USE  
IN TORONTO ALONE**

Write for our descriptive Circular.

Manufactured and Sold ONLY by the

818 or 918—ELEVATED TANK FOR COAL AND WOOD  
Made of the best Blue Polished Steel and Malleable Iron.  
Delivered to any Railway Station in Ontario,  
Quebec, New Brunswick, Nova Scotia and  
Prince Edward Island. We pay the freight.

PRICE  
CASH **\$39**

**CANADA MALLEABLE AND STEEL RANGE MFG CO., LIMITED,** 1240 Dundas Street  
TORONTO, Canada