

ARMSTRONG & MORRISON

MANUFACTURERS OF STEEL AND IRON PIPE AND MINING MACHINERY.

We are making the best and most serviceable Automatic Mining Ore Cars (including Scoop Cars) for sale in the market. These cars are fitted with CAST STEEL WHEELS and are made in different sizes.

Ore Cars

o—Write for particulars.—o

Office and Works: foot of Heatley Avenue.

P. O. BOX 51, VANCOUVER, B.C.

F. ADRIAN MEYER BROKER

Sub-Collector of Customs. . . .

Deputy Collector of Inland Revenue.

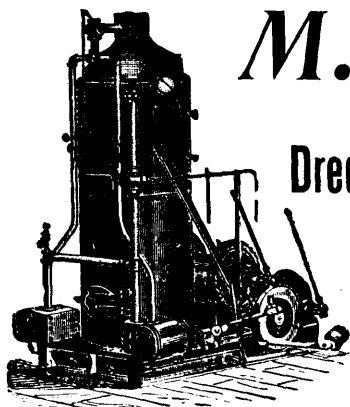
Notary Public.

VERNON, B.C.

MICHIGAN COLLEGE OF MINES.

Supported by the State of Michigan. Practical work. Elective system. Special advantages for men of age and experience. For catalogues address

DR. M. E. WADSWORTH, President,
Houghton, Michigan



M. BEATTY & SONS,

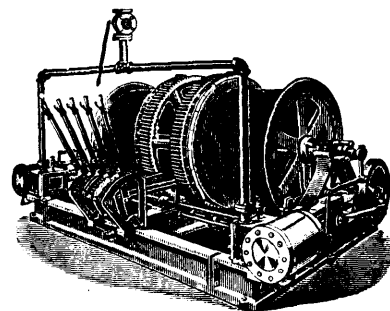
WELLAND, ONTARIO,

Dredges, Ditchers and Steam Shovels,

For Dredging, Ditching, Dyking, Gold Mining, Etc.
Of various styles and sizes to suit any work.

Mine Hoists, Hoisting Engines, Stone Derricks, Horsepower Hoisters, Suspension Cableways, Submarine Rock Drilling Machinery, Gang Stone Saws, Centrifugal Pumps for Drainage Works, Pumping Sand, Gold Mining, Etc.

We also furnish WIRE ROPE at Lowest Prices.



Joshua Hendy Machine Works,

Nos. 38 to 44 Fremont St., SAN FRANCISCO, Cal., U.S.A.

—MANUFACTURERS OF AND DEALERS IN—

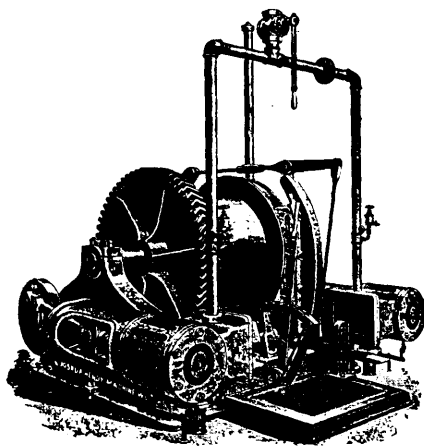
Hydraulic, Quartz Mining and Milling Machinery

—COMPRISING—

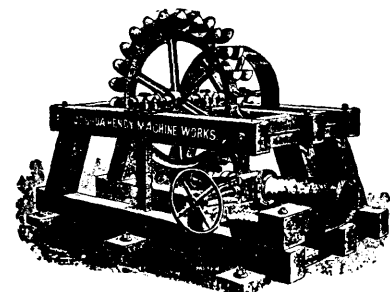
HYDRAULIC GIANTS,
WATER GATES,
SHEET IRON and
STEEL PIPE,
STAMP MILLS,
ORE CRUSHERS,
ORE FEEDERS,

CONCENTRATORS,
SMELTERS,
HOISTING and
PUMPING PLANTS,
SAW MILLS,
MINE and MILL
SUPPLIES, Etc., Etc.

Catalogues and Prices Furnished
Upon Application—



HOISTING ENGINE.



IMPACT WATER WHEEL.

WM. F. BEST, ANALYTICAL CHEMIST.

(Heidelberg and Leipzig.)

Late Official Analyst for the Province of New Brunswick.

Rooms 29, 30., Board of Trade Building, VICTORIA, B.C.

HENRY NICHOLSON,

NOTARY PUBLIC, MINING AGENT,

MINING NEGOTIATIONS TRANSACTED.

OFFICE: CAMP MCKINNEY, B.C.

N.B.—Some valuable mining properties in Camp McKinney and vicinity for disposal. Correspondence solicited.

A. VAN DER NAILLENS'

School of Practical, Civil, Mining,
Electrical Mechanical Engineering.

Surveying, Architecture, Drawing and Assaying, Cyanide, Chlorination, Metallurgy, Assaying of Ores, \$25; Bullion and Chlorination Assay, \$25; Blow-pipe Assay, \$10; Full Course of Assaying, \$50. Established 1864. Open all year.

Send for Circular. 933 Market St., San Francisco, Cal.

When writing to Advertisers kindly refer to the B.C. MINING RECORD.