

Canada's Enchanted Island

(By Frank Giolma)

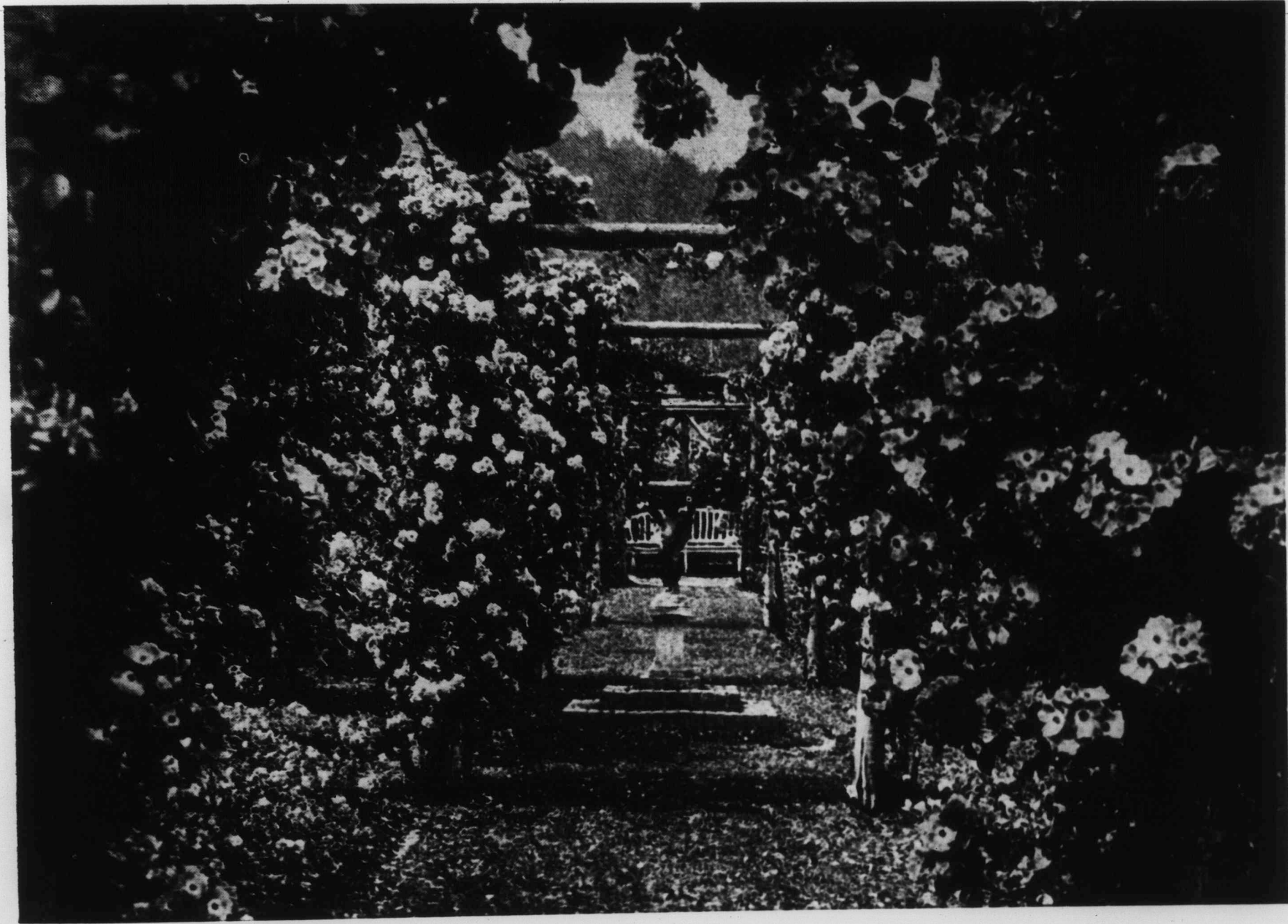
One of the most distinctive charms of Victoria, capital city of British Columbia to the motorist is that you step off the steamer that has brought you across from the Mainland, right into your car and start your tour of the Pacific Wonderland or Island of Enchantment.

Victoria has been called "The Portal to a thousand miles of Wonderland." "The city of perennial Spring." "A bit of Old England" and "The Playground of the North Pacific."

As we stated just now, you step off the boat into your car and begin your tour right at the landing, for in front of you rise the majestic Parliament Buildings, housing a wonderful library and still more wonderful museum, the former containing the original charts, maps, plans and logs of the early British, Spanish and Portuguese adventurers who discovered and made known to the world, Victoria and Vancouver Island, and the latter, specimens of all the flora and fauna of B. C. From the gallery outside the dome of the

wonderful old world gardens, they wind to and fro until the compass needle, if you carry one, gets tired of perpetually trying to turn towards the North. A day or two exploring around Fairfield, James Bay, Oak Bay and the Uplands is not too long, because you find a thousand quaint corners that you feel you must go back and look at again.

Then you will want to drive out into the Saanich Peninsula along more winding roads, now past old-world farms, orchards and strawberry gardens, golden sandy beaches and little land-locked bays until you come to Mr. Butchart's world-famous sunken gardens. Gardens, let it be said, made out of dis-used stone quarries and today a fairyland of delight, containing as they do, plants from every country in the world. Having spent a morning or afternoon in the gardens, you will drive a few miles up to the famous Dominion Government Astrophysical Observatory and have a peep at the heavens through the famous telescope, the largest of its kind



BUTCHART GARDENS

Parliament Buildings you will obtain a wonderful bird's-eye view of Victoria, the city of white houses and green gardens, surrounded by turquoise sea. Of course you will immediately want to drive along the extraordinary fantastic winding roads and streets that you see lying below you, and getting into your car you will start off for the residential section.

There are one hundred and ten roads in the best known residential section of Victoria and not one of them is straight. Banked in by great high hedges, broken here and there by

in the world, through the lenses of which one could easily drive an ordinary automobile.

Having done this, you will be coming back through Victoria and out past the double waterfalls at the Gorge, the famous Colwood Golf Course and along the bottom of the Coldstream Canyon and then up the side of the Malahat Mountain until you reach the summit, over 1200 feet above the sea. You will think that you have reached the roof of the world, for below you lies the Gulf of Georgia studded with a thousand and one olive green islands, while the view stretch-