



THE DERBY IS THE MAXIMUM OF MOTOR CAR VALUE
A New NAME---Not a New CAR

Derby Motor Cars

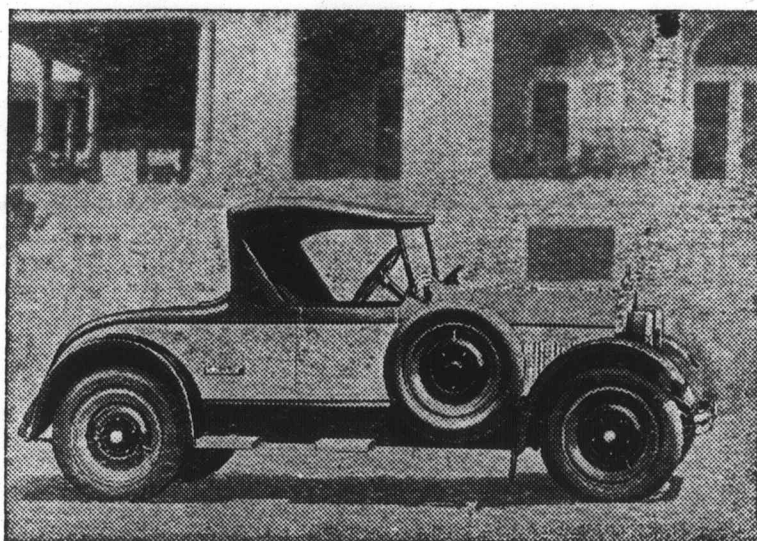
*A Car with "Chic" and "Dash." Graceful and Distinctive lines. Power--
Comfort beyond words--Economy. It is an Ideal Car for a Woman to Drive.*

STANDARD CAR--STANDARD UNITS

Continental Red Seal Motor--Timken Axles--Timken Bearings--Borg and Beck Clutch--
Delco--Warner--Peters--Balloon Tires--Lockheed Hydraulic Four-Wheel Brakes (the best
braking system in the world)--Disteel Disc Wheels--Ross Cam and Lever Steering Gear.

AN UNSOLICITED TESTIMONIAL

"My Car is still running same as new. Speedometer now shows 11,898 miles. Have not
spent a nickle on it so far."



The MOUNTAINEER ROADSTER

Snap and Style All Over

NOW Mr. Dealer or Mr. Prospective Buyer--would you not rather sell or buy
a car that becomes more firmly entrenched in the good graces of its owner--
the longer he drives it?

IF you are interested in building a business on a solid foundation of repeat
orders--write for details of the Derby Sales Franchise.

We can make immediate delivery of cars.

Derby Motor Cars Limited

SASKATOON, CANADA

MEIGHEN PAPERS, Series 3 (M.C. 26, I, Volume 129)

PUBLIC ARCHIVES
ARCHIVES PUBLIQUES
CANADA