

THE CANADA LUMBERMAN

VOLUME XXII.
NUMBER 1.

TORONTO, CANADA, JANUARY, 1902

TERMS, \$1.00 PER YEAR
(Single Copies, 10 Cents)

The Cleveland-Sarnia Saw Mills Company

A Gigantic Corporation Established in Canada.—Particulars of the Immense Plant at Sarnia.—Personnel of the Company.

Industrial progress is one of the strongest indications of a country's prosperity. When the wheels of industry are turning quickly, and the raw material is vigorously being converted from its crude form into the manufactured product, then prosperous conditions are likely to prevail throughout the country. The number of industrial establishments in Canada is steadily increasing, the development of the forest resources being a field in which considerable investments have been made.

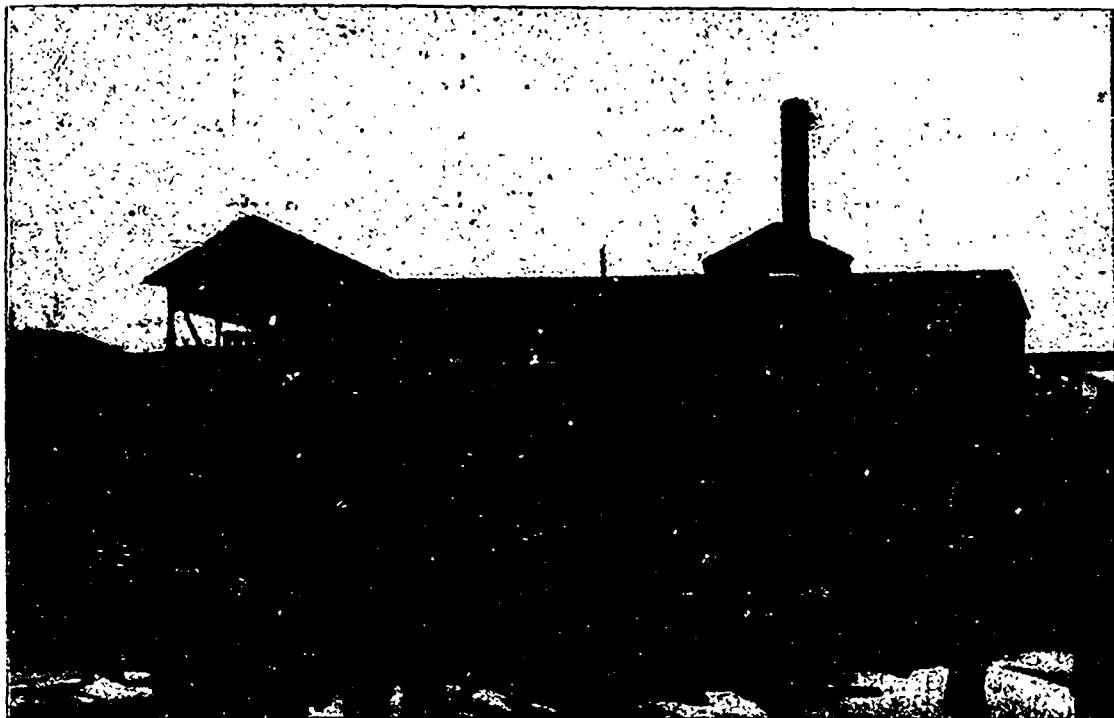
Some of the largest saw-milling plants in Ontario have been built by United States parties whose timber supply in their own country has become exhausted. The Cleveland-Sarnia Saw Mills Company, Limited, is one of the latest corporations to establish itself on Canadian soil. It is probable that this company would not now be located in Canada but for the Ontario law prohibiting the export of timber to the United States. Nevertheless, they have erected, in the town of Sarnia, one of the largest, most modern, and altogether unique plants to be found in the Dominion, and our reader generally will doubtless be interested in the several illustrations and particulars of the concern which are published in this number.

For many years the Cleveland Saw Mill & Lumber Company operated saw mills at Cleveland, Ohio, for the production of square timber, and also conducted an extensive lumber yard and planing mill business at the same point. The volume of business in late years has been in the neighborhood of \$1,000,000 annually. The supply of white pine was obtained from Michigan, but this supply having become exhausted, it was necessary to seek a new location for their saw mill in order that the business which they had established might be perpetuated. Hence it was decided to

locate at Sarnia, and thus be in a position to obtain a timber supply from the pine district of Northern Ontario.

THE TIMBER LIMITS.

In recent years Mr. L. D. Holden, the president of the company, and his associates, had been investigating the white pine timber supply of the Georgian Bay district, and eventually secured options on a wide area of timber



MILL OF THE CLEVELAND-SARNIA SAW MILLS COMPANY'S SARNIA, ONT.

properties. These options have been gradually claimed, and the company are now in possession of over 43,000 acres of the best white pine timber lands. The timber is of excellent quality, and, it is said, shows a good proportion of logs running four to six to the thousand, which are smooth, sound, and of cork pine quality, and which will produce a large percentage of No. 1 lumber. The timber is all tributary to the Spanish river, which flows into the Georgian Bay and is one of the best logging streams on the continent. The logs will be rafted to the new plant at Sarnia, where storage room is provided for twenty million feet, and at Kettle Point, eighteen miles north of Sarnia, an immense surplus storage ground is provided which has a capacity of one hundred million feet of logs. The company have now available for next year's sawing over fifty million feet.

THE MILL AND EQUIPMENT.

Work on the construction of the plant at Sarnia was commenced on April 15th, 1901, and the mill was put in operation about November 1st, notwithstanding that there was a considerable delay on account of labor difficulties in the factory where the machinery was being manufactured. The saw mills and booming ground occupy a frontage on Sarnia Bay of 2,078 feet, with a depth extending to the St. Clair river channel of nearly 3,000 feet; in fact, the main tram and piling piers are 2,732 feet in length. Lumber is piled two rows deep on each side of this tram, which will afford a piling capacity of twenty million feet. A slip on both sides affords easy access for loading lumber

on vessels, while a tramway underneath the tram provides facilities for forwarding stocks to the railroad tracks.

The main mill, illustrated on this page, will be devoted largely to sawing the best timber into boards and planks. It is 60 x 160 feet in size, with an L sorting shed attached, 40 x 140 feet, of which a view is shown. South of this mill is the timber mill, which is 40 x 204 feet in size, and will saw timber up to 75 feet in length. Between the two mills is a brick, stone and cement power house, 50 x 136 feet. The

centre of this structure is occupied by a splendid battery of six boilers, of the Dutch oven variety of furnaces, which are fired automatically. On either side of the boiler room are located the two engine rooms, each of which contains Corliss engines of the most modern type, the one running the larger mill being 24 x 42 inches in size. The entire power plant equipment was furnished by John Inglis & Sons, of Toronto.

The board mill is equipped with one right and one left hand Prescott band mill using twelve inch saws, fourteen gauge, each 48 feet 6 inches long, the right hand mill having a three-block carriage, and the left hand a four block carriage, of Allis make, latest improved type. On the left hand mill it is possible to cut any length of log up to thirty feet, and on the right hand mill short logs.