

**MATINEES
WED & SAT
BEST SEATS
25 & 50c**

**GRAND OPERA
PRICES NEVER CHANGE
HOUSE**

**MATINEES
WED & SAT
BEST SEATS
25 & 50c**

TORONTO'S FAVORITE ACTRESS IN A FAMOUS PLAY

EUGENIE BLAIR

IN ALEXANDER BISSON'S GREAT DRAMA OF MOTHER LOVE

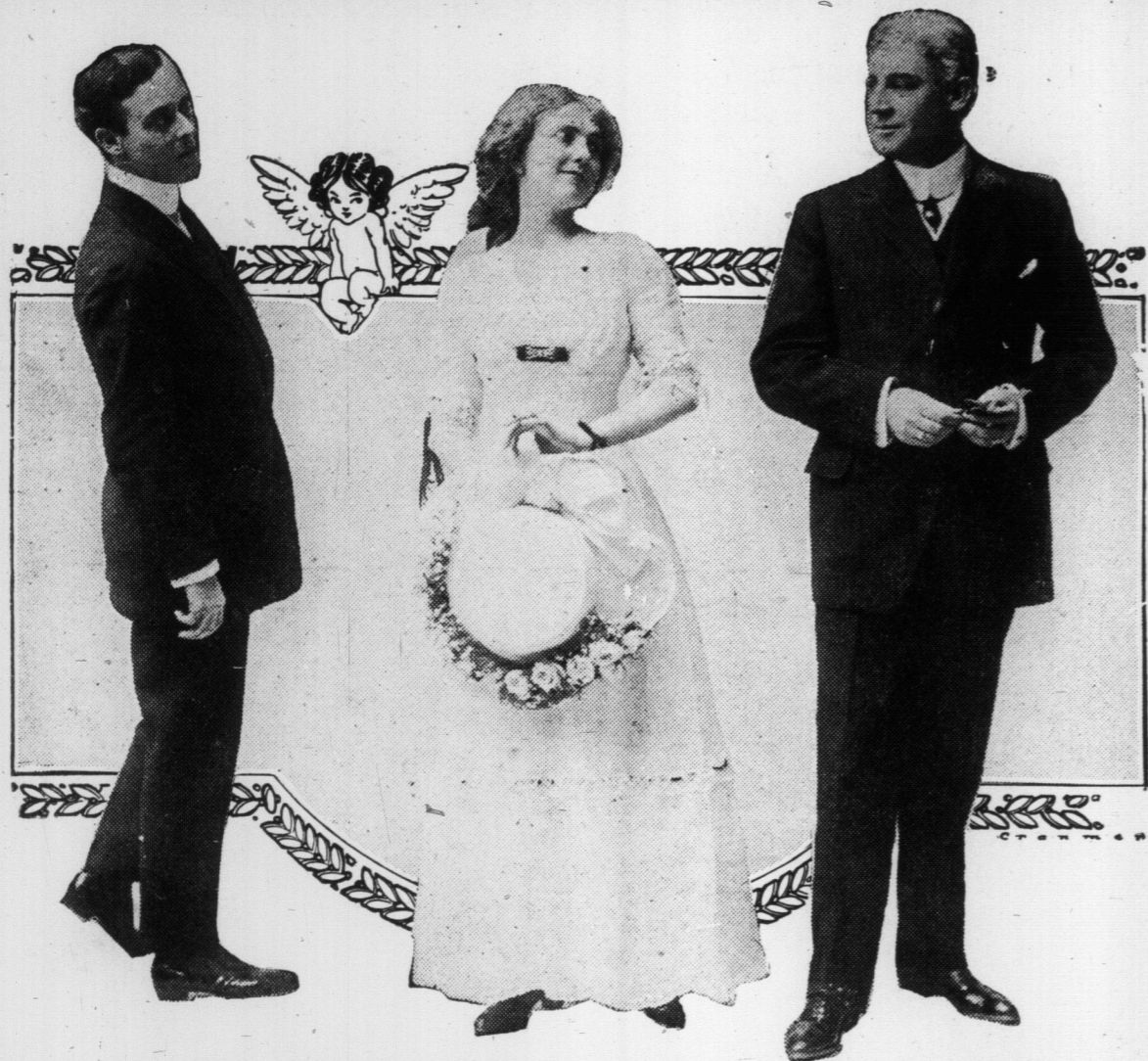
"MADAME X"

FIRST TIME IN THIS CITY AT LESS THAN \$1.50 PRICES

NEXT WEEK — FOR LAUGAING PURPOSES OOLY "SEVEN DAYS" A BIG PRODUCTION AND ENGLISH CAST — NEXT WEEK



**EUGENIE BLAIR
AS
"MADAME X"**



SCENE FROM "MADAME X" AT THE GRAND OPERA HOUSE ALL THIS WEEK.

EUGENIE BLAIR IN "MADAME X." Being an actress of wide scope and experience there is not a doubt but what she can bring to bear all the emotion, force and temperament so absolutely necessary toward giving a finished and polished interpretation of this difficult role. The play itself is too well known to say much about. In fact the press of the entire world has said about all that could be said. It is a truly wonderful play and one which has lent to the stage one of the greatest dramatic offerings ever presented. The story tells of a woman who erred and repented, but was not forgiven, and whose pride kept her from further seeking forgiveness. Left alone she drifted and drifted until her shame was so great she became an absinthe fiend, and in a row killed her paramour who sought to find her husband and extort money from him. Her own son whom she does not know, nor who knows her, is appointed to defend her and secures her acquittal thru his wonderful plea. Her husband who is in court to hear his boy plead his first case, recognizes his wife, who dies almost immediately after the verdict is rendered. Miss Blair is accompanied by a carefully selected company of metropolitan players, and brings the entire original production with her.

**Neilson's
Chocolates**
"The Chocolates that are different."

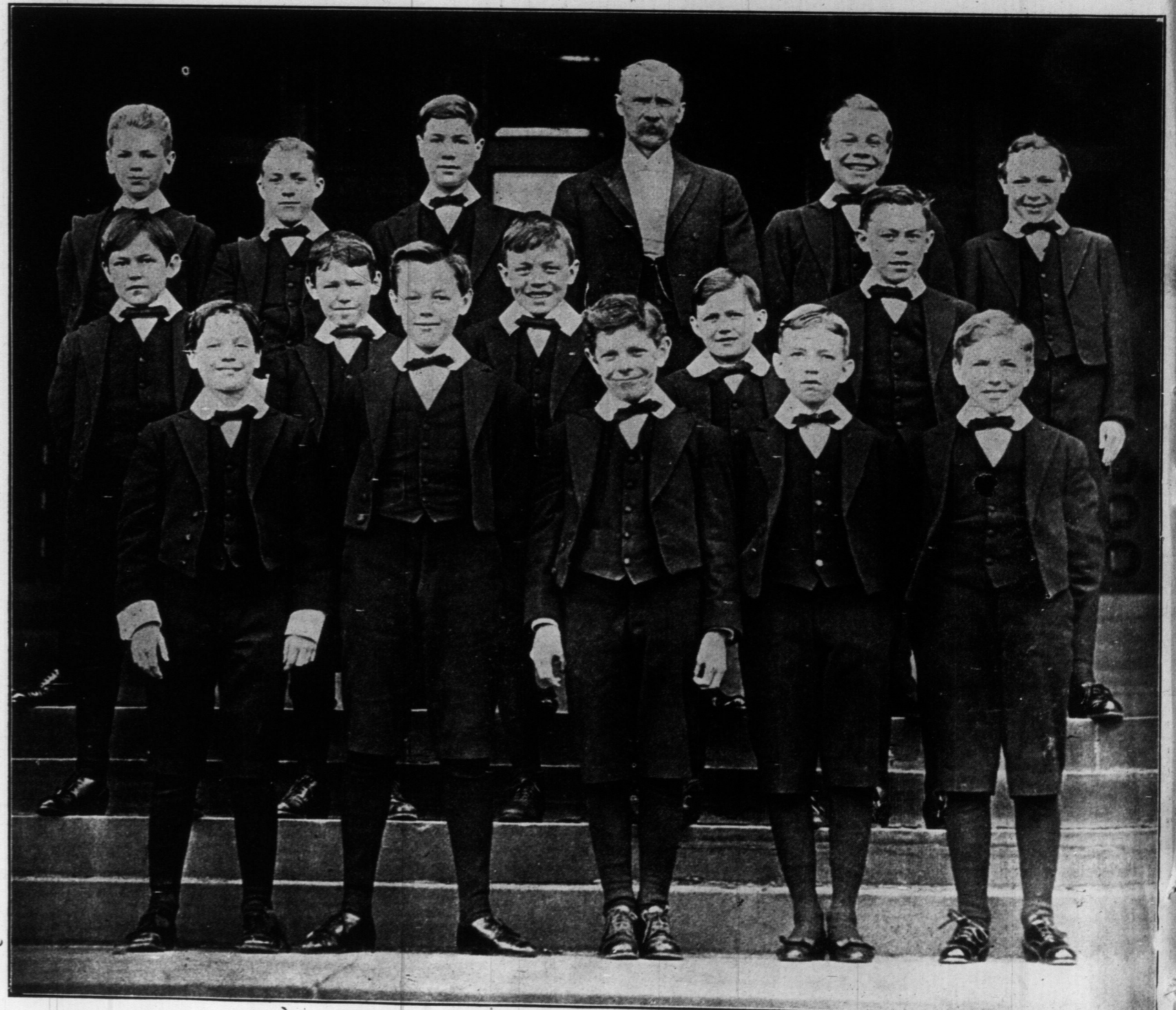
**FREE TO BOYS Magic Lanterns
Steam Engines**

To any boy sending 30 sets of scenic, floral, greeting and other post cards, at 10 cents a set, we will give free of charge either of these valuable prizes. These cards are the easiest sellers on the market, and you can earn a prize with a couple of hours' work. Just send us your name and we will send you the cards. When sold, send us the money and we will send you your prize the same day. We prepay all express charges.

Magic Lanterns are well made, with brass and nickel finished lens tubes, complete with 12 slides.

Steam Engines have blue steel boiler, spirit burner, fitted with whistle and fly wheel complete. Send us your name today and earn a prize at once.

HOMER-WARREN CO. (Department 123, TORONTO.)



PAGE BOYS OF THE ONTARIO PARLIAMENT BUILDINGS.

If you have an apple tree that is not producing fruit that you desire, it can be grafted with scions of good varieties and they will bear in three years. Grafting is interesting work, and can be performed by any amateur who will give the necessary attention to details. Have you ever seen a fruit tree bearing a half-dozen different varieties or more? If not, why not try the experiment for the fun of the thing?

When pruning apple trees see that they are well thinned out so that the sun can gain access to the centre. Do not allow any limbs to rub or cross. Pear and plum trees should be shortened in at least about one-third of last season's growth. Cherry trees require very little pruning when once well formed and well established.

Grape vines require systematic pruning each year. The method to follow will depend upon the system of pruning given the vine during the first two or three years of its growth. One of the main points to observe is to keep the bearing wood as near as possible the main trunk or the main arms. Thin out well, leaving only about six or eight limbs to a vine, well placed, and each limb with no more than six or seven buds.

Order seeds and plants for the garden as early as possible. By so doing, one is certain of getting what he wants and in best quality.

As soon as possible start seeds of nasturtiums for window boxes or for transplanting to the garden later. Do not sow thickly, as they do not transplant as easily as many other kinds of annuals. Place two or three seeds in a three-inch pot. To secure early flowers of mignonette, sow eight or ten seeds in the same sized pots as mentioned for nasturtiums. A few pots of petunias, verbenas, cosmos and lobelia also should be sown, as they require to be early to give good flowering results. Antirrhinum and scabiosa seeds may be started similarly.

110.0
down
Lanc
foot
ly w
Real
H
Oth
S
V
P
P.
Hyd
follo
1 o'e
To t
To
De
has-
Tor
ing
any
the
up
a sta
entit
cont
upon
ried
40 ye
men
the
the b
The
in th
syste
Chie
sirable
ment.
The
the av
numbe
out no
out
grievan
secret
control
be not
ing th
and o
policy.
At a
mission
nearly
his h
subord
forgett
positiv
having
specien
their
caution
They
ever
tifying
quence
the m
whole
charge
under
uninter
In o
the act
say the
tively
employ
the cor
duties
the
Mr. Ast
necess
manag
manag
flection
tion.
been
thoroug
and in
ment
pointed
25
stead
Cousen
with
manag
charge
credit
The
law
ageme
The
empto
derakin
that
ment
canon
on the
Hydro
(Cont