

GOOD Furniture

at less than the usual prices. That's the whole story in a nutshell. See our \$6.50 Extension Table. Have a look at our \$12.00 Bed-Room Suite.

Leslie Bros

298 MAIN ST. 263 AND 265 FORT ST. The Low Price Furniture House.

JOB PRINTING

OF EVERY DESCRIPTION AT THE NORTHWEST REVIEW OFFICE, 294 McDermott St. WINNIPEG. MEMORANDUMS, LETTER HEADS, BILLS OF FARE, CHECK BOOKS, VISITING CARDS, BUSINESS CARDS, SOCIETY WORK, PAMPHLETS, BILL HEADS, NOTE HEADS, STATEMENTS, ENVELOPES, DODGERS.



MAIL CONTRACT.

SEALED TENDERS, addressed to the Postmaster General, will be received at Ottawa until noon, on Friday, 15th February next, for the conveyance of Her Majesty's Mails, on a proposed Contract for four years, once per week, each way, between Lower Fort Garry and Pigeon Bluff from the 1st April next.



SILVERWARE

Have you seen our windows? They are a sample of what is inside. We have the finest and most complete stock in Manitoba for you to choose from. Come and make your selections now, before the rush, thereby securing your pick when the assortment is complete.

W. Jordan.

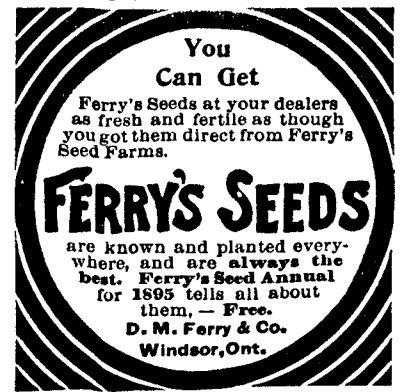
Carriages Kept at Stable. By the Hour, from 7 to 12 \$1. No order less than 22 to 22 \$1. Weddings \$3 to \$5. Christenings \$2 to \$3. Funerals \$2 to \$3. Church and return \$2. Opera " " \$2. Ball " " \$2. To or from depot \$2 to \$3.

Save Paying Doctors' Bills

BY USING Dr. Morse's Indian Root Pills. THEY are the Remedy that the bounteous hand of nature has provided for all diseases arising from IMPURE BLOOD.

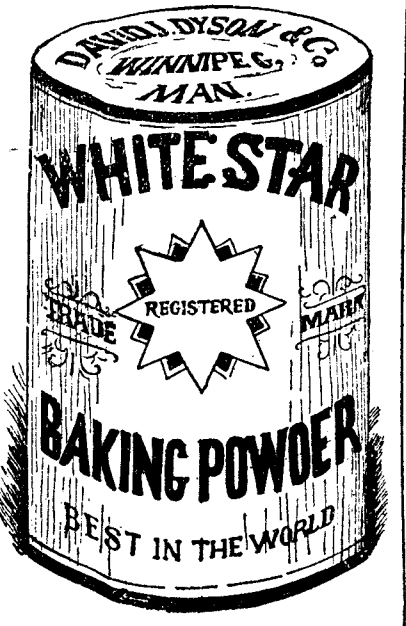
Morse's Pills. W. H. COMSTOCK, MORRISTOWN, N.Y.

Biliousness—Fever and Ague. So pleasantly do Dr. Morse's Indian Root Pills search out and drive away the seeds of disease that all persons living in a country where fever and ague, and all other bilious diseases, are prevalent, will find they should never be without them.



SHORTHAND.

Thorough instruction at Winnipeg Business College and shorthand Institute. Shorthand Course includes Shorthand, Typewriting, Business Writing, and Business Letter-writing.



Catholic Order of Foresters.

Meets 2nd and 4th Friday in every month; at unity Hall, McIntyre Block. Chaplain: Very Rev. Father Langens, O. S. A.; Chief Ranger P. D. Deegan; V. C. R. L. O. Genest; R. Secy, Thos. Jobin; Financial Secy, H. A. Russell; Treas, G. Germain; Trustees, J. J. Egan, H. A. Russell, T. J. McArthur; Sr. conductor, E. B. Dowdall; Jr. conductor, E. Pounds; Insigle McIntiel, F. Gould, Outside Sentinel, Angus McDougall, J. D. M. Donald, Delegate to Annual Session, R. Murphy Alternate.

SILVERWARE SILVERWARE SILVERWARE.

We carry Sterling Silver in great variety. D. R. Dingwall, 584 Main St.

W. Jordan.

Carriages Kept at Stable. By the Hour, from 7 to 12 \$1. No order less than 22 to 22 \$1. Weddings \$3 to \$5. Christenings \$2 to \$3. Funerals \$2 to \$3. Church and return \$2. Opera " " \$2. Ball " " \$2. To or from depot \$2 to \$3.

PHOTO

Send Your PHOTO. HOMER FOR XMAS. It will be appreciated next to seeing yourself. Be sure to have it taken at the American Art Gallery, 574 1/2 Main St. And finished in the latest and most artistic style. Mrs. CARR is giving special attention to Children.

YOUR LIFE IS IN DANGER

Beig Insured--in the Wrong Office.

The Mutual Reserve Fund Life Association

OF NEW YORK, (Incorporated.) E. B. HARPER, PRESIDENT. ASSESSMENT SYSTEM. MUTUAL PRINCIPLE.

New Business First TEN Months of '93 and '94: 1893—\$48,112,345.00 - 1894—\$63,112,395.00. Why? Increase for 1893 to 1st November, \$15,000,050.00.

The cost for \$2,000 Insurance in the Mutual Reserve has been less than the rates charged for \$1,000 under the Old System.

Progress of the Association from Dec. '31, 81, to Dec. 31, '93:

Table with 5 columns: YEAR, Insurance in force, Cash and Invested Assets, Reserve or Emergency Fund, Death Claims Paid.

Average yearly increase, Reserve or Emergency Fund, since January 1, 1882..... \$295,307.44. Average yearly increase, Reserve or Emergency Fund, since January 1, 1889..... \$326,633.52. Increase Reserve of Emergency Fund, since January 1, 1891, [per. months]..... \$201,852.75.

Total Death Claims paid since January 1, 1894..... \$2,567,000.74. Total Death Claims paid since organization in 1881..... 20,251,344.60. Total Cash and Invested Reserve or Emergency Fund, Sep. 19, '84 3,725,509.05.

Those joining before close of 1894 save year in time and profits. Why not join now and Save Money? For full particulars apply to your local agent, or.....

Head Office for Northwest Canada, and North and South Dakota, McIntyre Block, Winnipeg.

A R McNICHOL General Manager.

WATSON, ARMINGTON & CO., PUBLIC CONFIDENCE

Once secured is of priceless value to a stove. It is the mainspring of success, and attracts a patronage (not spasmodic) but steady and continuous. We think we have won the confidence and favor of the people of Winnipeg in our effort to supply them with judiciously selected merchandise, desirable and reliable in character, which we always sell at prices less than are often quoted on goods of questionable age and style.

When we think a reduction of prices necessary to move certain merchandise quickly, we take the loss cheerfully and consider the advertising gained through the low prices our profit.

We have made some of these reductions in the different departments and will continue it for two weeks only. It will be your loss if you do not avail yourself of this Golden Opportunity.

Our stock is full of novelties for the holidays. Another lot of silks for evening wear just in, and at rock bottom prices.

See what we can do for you in dress goods at 25c. PER YARD.

Don't fail to see our special values in Mens Underwear. Smallwares one of our special features.

Watson, Armington & Co. McIntyre Block. 424 Main St. Winnipeg.

SUBSCRIBE FOR THE NORTHWEST REVIEW

The Catholic Paper of Manitoba and N. W. T. \$2.00

HALF PINT BOTTLES

Best Stock Ales, Porter and Lager can be had in the above size bottle—which is becoming the most popular for family use. Very convenient—easily opened—no waste—each contains a glass. Order from any of the wholesale Liquor Dealers—or through your grocer—or send direct to undersigned.

Edward L. Drewry. Redwood and Empire Breweries.

NORTHERN PACIFIC R.R.

Time Card taking effect Monday, Nov. 30, 1893.

MAIN LINE.

Table with 4 columns: North Bound, Read up, Stations, South Bound, Read down.

MORRIS-BRANDON BRANCH.

Table with 4 columns: East Bound, Read up, Stations, West Bound, Read down.

PORTAGE LA PRAIRIE BRANCH.

Table with 4 columns: East Bound, Read up, Stations, West Bound, Read down.

Stations marked *—have no agent. Freight must be prepaid. Numbers 107 and 108 have through Pullman vestibuled Drawing Room Sleeping Cars between Winnipeg and St. Paul and Minneapolis. Also Palace Dining Cars. Close connection at Chicago with eastern lines. Connection at Winnipeg Junction with the Union Pacific and from the Pacific coast. For rates and full information concerning connection with other lines, etc., apply to any agent of the company, or CHAS. S. FEE, H. SWINFORD, G.P.&T.A., St. Paul, Gen. Agt., Winnipeg H. J. BELCH, Ticket Agent, 486 Main Street Winnipeg.

OCEAN STEAMSHIPS.

ROYAL MAIL LINE.

The Cheapest and Quickest Route to Old Country.

Numidan-Allan Line FROM MONTEAL. Mongolian-Allan Line FROM MONTEAL. Vancouver-Dominion Line FROM MONTEAL. Oregon-Dominion Line FROM MONTEAL. Berlin-American Line FROM NEW YORK. Paris-American Line FROM NEW YORK. Magestic-Red Star Line FROM NEW YORK. Belgeland-Red Star Line FROM NEW YORK. Kynland-White Star Line FROM NEW YORK. State of Nebraska-Allan State Line FROM NEW YORK. State of California-Allan State Line FROM NEW YORK. Southwark-American Line FROM PHILADELPHIA. Indiana-American Line FROM PHILADELPHIA. Cabin, \$40, \$45, \$50, \$60, \$70, \$80, Intermediate, \$2 and \$3; Steerage, \$10 and upwards. Passengers ticketed through to all points in Great Britain and Ireland at specially low rates to all parts of the European continent. Prepaid passages arranged from all points. Apply to the nearest steamship or railway ticket agent, or to ROBT. KERR, General Passenger Agent, Winnipeg.

The Popular Route ST. PAUL, MINNEAPOLIS

CHICAGO, AND all points in the UNITED STATES and CANADA, also the KOOTENAI GOLD MINES.

Pullman Palace Vestibuled Sleeping Cars and Dining Cars ON EXPRESS TRAINS DAILY TO TORONTO, MONTREAL,

And all points in EASTERN CANADA, via St. Paul and Chicago.

An opportunity to pass through the celebrated Mt. Air Tunnel. Baggage is checked through in bond, and there is no customs examination. OCEAN PASSAGES And Bertha secured to and from Great Britain, Europe, China, and Japan. All first-class steamship lines are represented.

The Great TRANSCONTINENTAL ROUTE to the Pacific Coast.

For tickets and further information apply to any of the company's agents or H. J. BELCH.

Ticket Agent, 486 Main St., Winnipeg. H. SWINFORD, General Agent, Winnipeg. CHAS. S. FEE, Gen. Passenger and Ticket Ag., St. Paul.

CANADIAN PACIFIC RY

Direct connection with Steamers at Halifax and New York for all European, South American and South African Points.

Return Tickets on Sale to the Pacific Coast Points.

Hawaiian Islands, Australia, China and Japan.

Sailing from Vancouver. FOR AUSTRALIA

Warrimoo..... Feb. 18. Miowera..... Mar. 16.

FOR CHINA AND JAPAN

Empress Japan..... Feb. 4. Empress China..... Mar. 4.

W. W. McLeod, City Passenger Agent 471 Main street. J. S. CARTER, Depot Ticket Agent, or to ROBERT KERR, General Passenger Agent.

Catholic Prayer Books

Hart & MacPherson, BOOKSELLERS AND STATIONERS

364 Main Street, Winnipeg, Man.

PICTURES.

GO TO G. W. CRANSTON, 408 Main Street. A large stock to select from, at prices to suit the times. Telephone 480.