



JOHNS-MANVILLE SERVICE



J-M Products are not only the result of experience and expert workmanship on materials of the highest grade, but have behind them the backing of J-M Service and Responsibility. They must give absolute satisfaction in service.

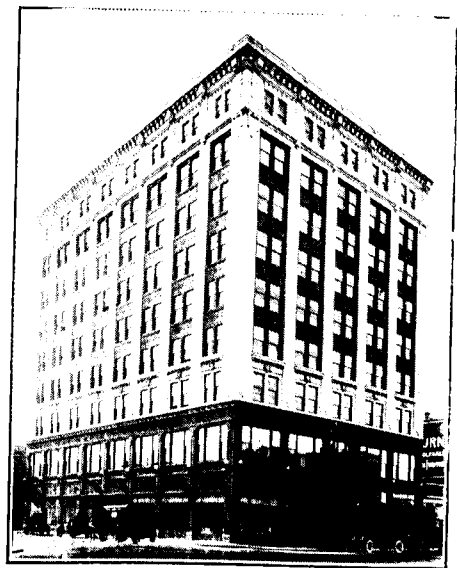
J-M Asbestos Built-Up Roofing defies the elements

Asbestos is inert to oxygen. The oxygen in the air and water that has so great a destructive effect on organic and metallic materials leaves Asbestos unaffected. It can't burn—can't rot—can't rust. It is imperishable stone. That, in short, is the reason why J-M Asbestos Built-up Roofing defies the action of the elements.

Mechanical strains, such as are created by wind-pressures, roof movements, etc., cannot damage it. Built-up in 3 and 4-ply laminations, it is amply strong to withstand all such stresses. It never needs painting. It is economical; it abolishes roofing troubles.

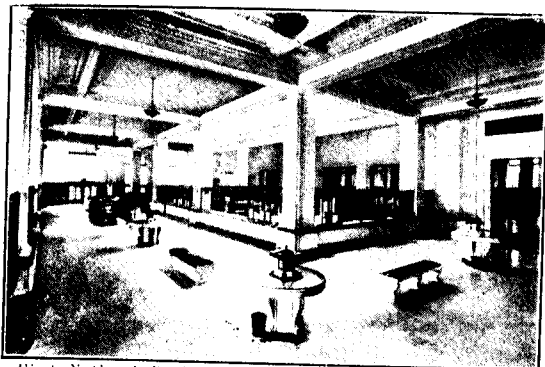
J-M Responsibility guarantees its efficiency. Write for booklet.

J-M Asbestos Built-Up Roofing is tested, approved and labelled by the Underwriters' Laboratories, Inc., under the direction of the National Board of Fire Underwriters. It is given Class A rating on inclines not exceeding 3 inches to the foot when laid as directed over non-combustible roof deck.



*Bond Building, Winnipeg. J. H. Atchison, Architect.
J-M Asbestos Built-up Roofing.*

Acoustical considerations are claiming a big share of attention from building owners



*First National Bank, Milwaukee, Wis. Acoustically treated
by J-M Method.*

One of the difficulties Architects to-day must contend with is the well-known tendency of the stone, tile and hard plaster so extensively used in modern buildings to reflect sound waves and increase the distracting effect of reverberation.

The J-M Method of Acoustical Correction effectively copes with this problem by scientifically counteracting this tendency. This correction can be easily and satisfactorily accomplished without interfering with the general building scheme.

J-M experts will gladly co-operate with Architects for the introduction of this important improvement.

THE CANADIAN H. W. JOHNS-MANVILLE CO., LTD.
TORONTO MONTREAL WINNIPEG VANCOUVER