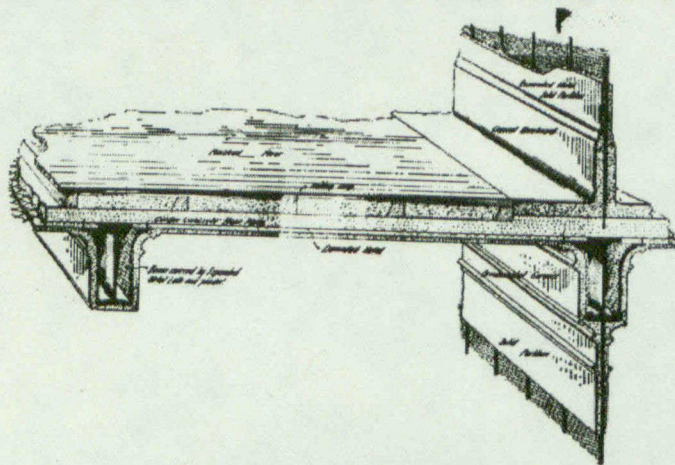


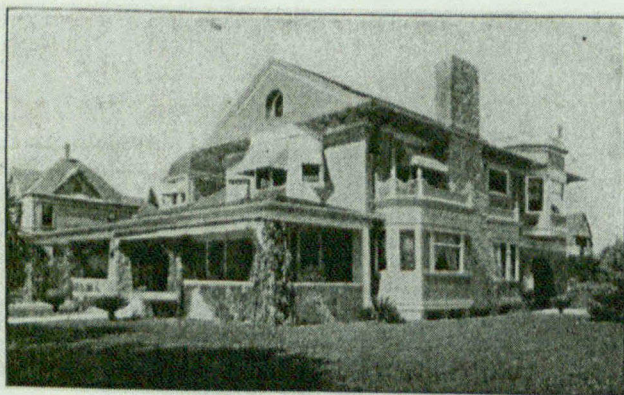
EXPANDED METAL

— AND —

CEMENT CONSTRUCTION



Fireproof floors and partitions of the most modern type cost but little in excess of ordinary wood construction.



Up-to-Date Cementine House

Why should Architects and Builders cling to the commonplace brick house? In Europe and in the United States the Cementine type of building is rapidly becoming the vogue. It is cheaper than brick—and is adapted to a wide range of artistic effects.

Write for particulars.

Expanded Metal & Fireproofing Co.,
 100 King Street West, TORONTO LIMITED