

especially true where new forest was forming and where the young trees were close together and well shaded.

*ORTHEZIA CALIFORNICA* Ehrh.—(CAN. ENT., XXXVIII, p. 329).

A new locality for this species is on Mt. Tamalpais, Marin County, California, collected by Dr. E. C. Van Dyke.

*ERIOCOCCUS HOWARDI* Ehrh.—(CAN. ENT., XXXVIII, p. 331).

Received specimens collected by Mr. E. K. Carnes on *Quercus* sp., Cachecreek, Yolo County, California.

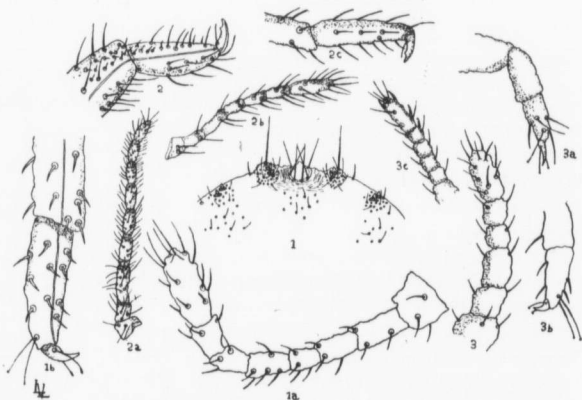


FIG. 17.—New Coccida, Ehrhorn.

#### EXPLANATION OF FIG. 17.

1. Caudal lobes of *Trionymus californicus*.
- 1a. Antenna of adult female of *Trionymus californicus*.
- 1b. Tarsus and claw of adult female of *Trionymus californicus*.
2. Tarsus and claw of *Ceroputo Koebelei*.
- 2a. Antenna of adult female of *Ceroputo Koebelei*.
- 2b. Antenna of larva of *Ceroputo Koebelei*.
- 2c. Tarsus and claw of larva of *Ceroputo Koebelei*.
3. Antenna of adult female of *Sphaerococcus cupressi*.
- 3a. Tibia, tarsus and claw of adult female of *Sphaerococcus cupressi*.
- 3b. Tarsus and claw of larva of *Sphaerococcus cupressi*.
- 3c. Antenna of larva of *Sphaerococcus cupressi*.