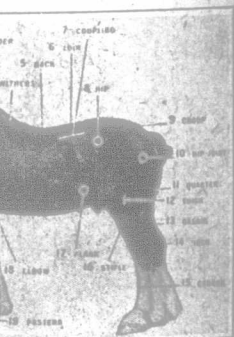


ment.

a Draft Horse.

requently hear their neighbors discussing the horses owned by them. At fair time this discussion is more common and a bit of excitement on the part of the boys of school. Many boys of school pick out a good horse from their judgment is usually based on appearances only, and to give reasons for their accompanying illustration taken from "Elementary Horticulture," which is a book used in the schools, and it shows the points of a horse about which a few words so children acquainted with an animal in some cases, make use of

must, in the first place, weigh from 1,500 to 2,000 lbs. The larger he is the better. Quality and conformation are more important than quantity. Information we mean the horse bears to another. For a horse with a long, weak neck and straight pasterns or a horse with a poor conformation. A horse should be fairly well proportioned with the head should be wide between the eyes, intelligent, and the body should be broad. Coming to the neck, it should be straight and strongly coupled with the shoulder is a very important part of the horse, for it is here that the power of the body is transferred. The shoulder should be straight or upright; a slope is required as the horse will be springy and the feet, legs and body should be large and muscular. The cannon bone which is the fetlock which gives the leg a flat appearance.

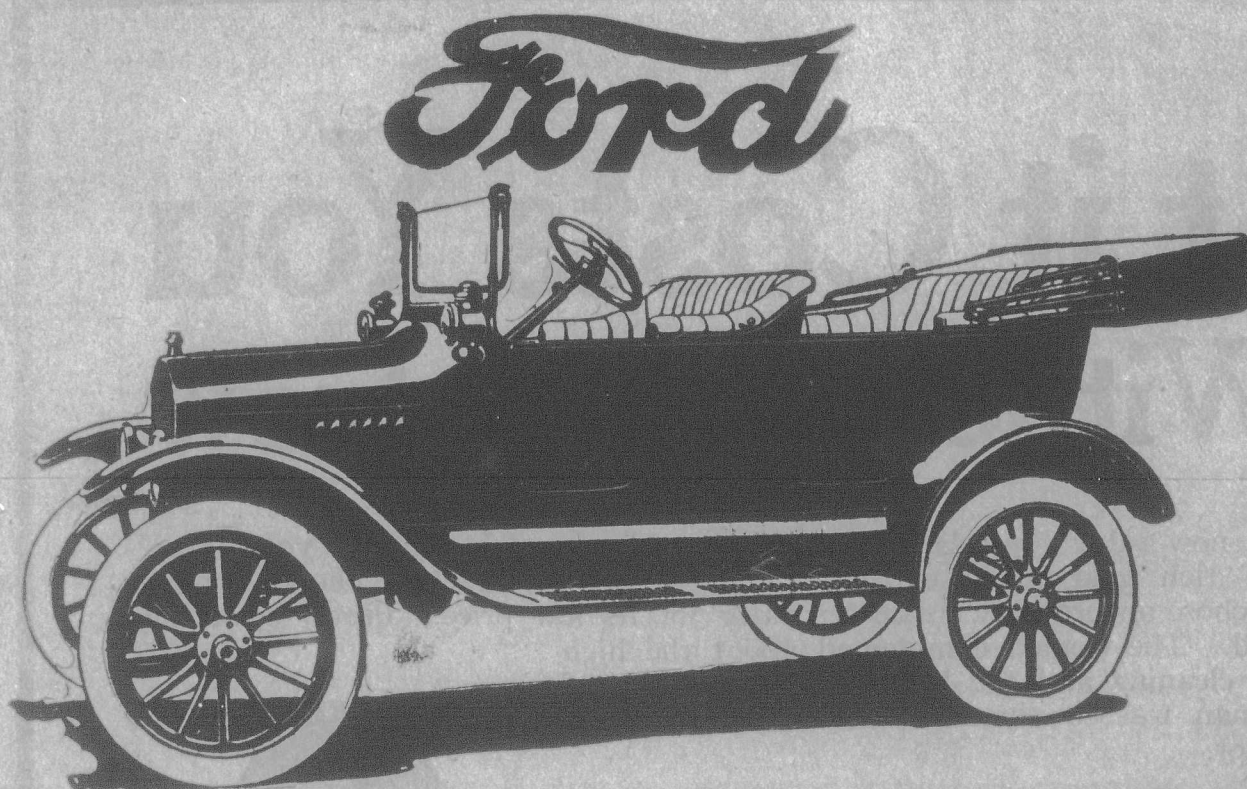


s of a Horse.

the side the cannon bone should be roundish, for a square indicates a poor quality of strength. We have seen horses before, but placed on the slope. Horses which stand on pasterns usually have been used a few years, and then they are not so good, no horse, is a good horse when the feet are good; they like to be top and behind, well set and carried true.

space to describe all the points of interest to study the illustration. We have given the points of interest in detail. We have given the points of interest in detail.

to have the school can when the teacher



"A Joan of Arc Machine"

SHE withstood everything in the field and above all was, and still is, the last and only car to survive until the cessation of hostilities—Extract from letter received by Ford Motor Company from a British Soldier, in Africa.

Over shell-torn roads, through water soaked fields, second only to the tanks in its power to climb debris and crater holes, the Ford car made a world famous record in the fighting area of the great war. In press despatches, in field reports, in letters, in rhyme and song the praises of the Ford were sounded.

In France	-	700 cars out of 1,000 were Fords
In Italy	-	850 cars out of 1,000 were Fords
In Egypt	-	996 cars out of 1,000 were Fords
In Mesopotamia	-	999 cars out of 1,000 were Fords

The Ford power plant that established this world-wide record in every theatre of the war remains the same. It will be in the Ford you buy.

Ford Runabout, \$660. Touring, \$690. On open models the Electric Starting and Lighting Equipment is \$100 extra. Coupe, \$975. Sedan, \$1,175 (closed model prices include Electric Starting and Lighting Equipment). Demountable rims, tire-carrier and non-skid tires on rear as optional equipment on closed cars only at \$25 extra. These prices are f. o. b. Ford, Ont., and do not include War Tax.

Buy only Genuine Ford Parts. 700 Canadian Dealers and over 2,000 Service Garages supply them.

Ford Motor Company of Canada, Limited
Ford - Ontario

Cream of the West Flour

—the hard wheat flour that is guaranteed for bread



The high gluten flour prized for splendid big loaves of delicious, nourishing bread. Ask for it at your dealer's.

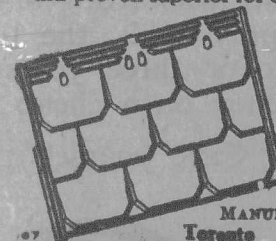
The Campbell Flour Mills Company, Limited, West Toronto

Build to last



BEFORE you build or repair your barn or house, let us show you how much money we can save you. Here are the "Metallic" fireproof, stormproof and timeproof specialties. "Eastlake" Galvanized Shingles. "Empire" Corrugated Iron. "Metallic" Ceiling and Wall Plates, (for inside use.) "Metallic" Brick and Rock Face and Clapboard Siding. "Acheson" Roof Lights. "Halitus" Ventilators. "Empire" Silo Roofs, etc.

We guarantee the best for your money. Our goods have been tried and proven superior for over 30 years.



Write us for booklets and prices today. A post card will do.

Address
**Metallic
Roofing
Co. Limited**
MANUFACTURERS
Toronto Winnipeg

"Metallic"

GRAND TRUNK RAILWAY SYSTEM

The Double Track Route

BETWEEN MONTREAL, TORONTO, DETROIT AND CHICAGO

Unexcelled dining car service

Sleeping Cars on Night Trains and Parlor Cars on principal Day Trains.

Full information from any Grand Trunk Ticket Agents or C. E. Horning, District Passenger Agent, Toronto.

Cream Wanted

Ship your cream to us. We pay all express charges. We supply cans. We remit daily. We guarantee highest market price.

Ontario Creameries

LONDON - LIMITED - ONTARIO



THE HALLIDAY COMPANY, LIMITED, HAMILTON, CANADA

How to Run a Tractor

A complete, practical course by mail on construction, operation, care, and repair of all kinds of gas and gasoline tractors. Also simple automobile course. Write for free literature.

Canadian Correspondence College, Ltd., Dept. E. Toronto



Wrestling Book FREE

Be an expert wrestler. Learn at home by mail. Wonderful lessons prepared by world's champion Farmer Burns and Frank Gotch. Free book tells you how. Secret holds, blocks and tricks revealed. Don't delay. Be strong, healthy. Handle big men with ease. Write for free book. Send age. Farmer Burns, 506 Range Road, Oshawa, Ont.