

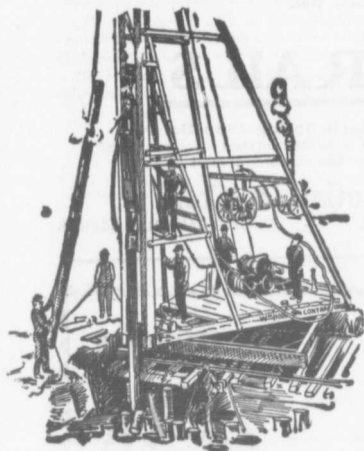
The Canadian Bridge Co., Limited

WALKERVILLE, ONT.

MANUFACTURERS OF

RAILWAY AND HIGHWAY BRIDGES

Locomotive Turn Tables,
Roofs, Steel Buildings and
Structural Iron Work of all descriptions



Pile Driving

on land or water by Steam Pile Drivers or Drop Hammers.

Portable Boilers, Hoisting Engines, Pumping Machinery
To Let—Bridge Building, Trestle Work, Wharves, Dams, Diving Submarine Work and General Contracting.

WM. HOOD & SON
10 Richmond Sq. - MONTREAL

CANADIAN EMPLOYMENT AGENCY

Licensed Labor Contractors

.. 182½ St. Antoine Street ..
MONTREAL

All classes of labor, skilled and otherwise supplied at short notice.
Special attention given to gangs for construction, lumber camps, etc.

All Orders given Special Attention.

The Ontario Accident Insurance Co.

ACCIDENT, EMPLOYERS, ELEVATOR
AND GENERAL LIABILITY

104 St. Francois Xavier St Montreal

DEBENTURES

Municipalities contemplating the issue of Debentures will find it to their advantage to communicate with

G. A. STIMSON & CO.

Investment Dealers

24 and 26 King St. W. TORONTO

HEADQUARTERS FOR

Pig Lead, Pig Tin, Solder,
and Manganese Anti-Friction Babbitt Metal.

Syracuse Smelting Works

Montreal, Que.

M. BEATTY & SONS LIMITED

WELLAND, ONT.

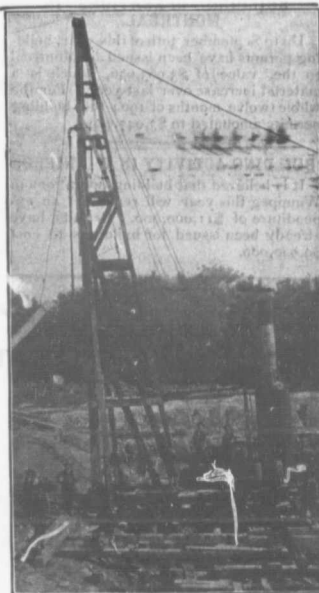
DREDGES, DITCHERS, DERRICKS

Steam Shovels, Submarine
Rock Drilling Machinery, Mine
Hoists, Contractors' Machinery

HOISTING ENGINES

Centrifugal Pumps for Water
and Sand, Stone Derricks,
Clam Shell Buckets, Coal Tubs,
Concrete Tubs.

Please mention this paper when corresponding with advertisers.



PILE DRIVING

and Foundation Work.

By 5-ton Automatic Steam Pile Hammer, Water Jet or Drop Hammers, Dock Building, Submarine Work and Dredging.

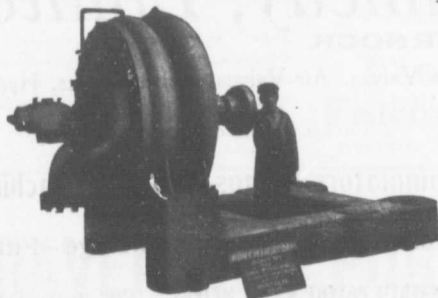
BUILDING MOVER AND WRECKER

General Contracting.

JNO. E. RUSSELL, - Toronto
906 Queen St. E.—Phone M. 3007.

WORTHINGTON PUMPS

FOR WATER WORKS SERVICES



Worthington 2 Stage Turbine Pump for the Winnipeg Water Works, Capacity 5,000,000 per 24 hours.

We Have Two Stage Pumps in Operation Delivering Against 160 Pounds Pressure

"WORTHINGTON" TURBINE PUMPS

for heads up to 2,000 feet, are
Reliable, Durable, Efficient
and exceedingly simple. 3 3

WE ALSO MANUFACTURE

Boilers, Tanks, Filters
Etc.

The John McDougall Caledonian Iron Works Co.,

ESTABLISHED 1852

Montreal.

Limited.