

BUSINESS NOTES.

The Laval Electric Company, Montreal, is applying for incorporation.

Rochon & Paquette, contractors, Montreal, have dissolved.

Joseph St. Jean dit Lagarde has registered proprietor of the business of St. Jean & Fils, contractors, Montreal.

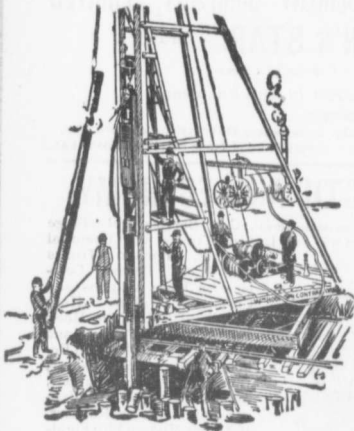
Daniel Dow, proprietor of the Grand

Forks Foundry & Machine Shop, Grand Forks, N. D., has established a branch in Winnipeg, where he will manufacture all kinds of architectural iron work.

The Enoch James Roofing Company, Limited, has been incorporated, to acquire from Enoch James, of Montreal, the patents issued to him by the Dominion Government for a roofing process and to

do a general business as roofers, sheet metal workers, manufacturers of James' patent roofing, etc.

J. A. McCrae, of Niagara Falls, and John Ross, of Toronto, railway contractors, have opened offices in Woodstock, Ont., as headquarters while they are engaged in double-tracking the Grand Trunk Railway between London and Paris.

**PILE DRIVING**

on land or water by Steam Pile Drivers or Drop Hammers.

**Portable Boilers
Hoisting Engines
Pumping Machinery**

TO LET

Bridge Building, Trestle Work, Wharves, Dams, Diving Submarine Work and General Contracting.

WM. HOOD & SON

10 Richmond Sq. - MONTREAL

DEBENTURES

Municipalities contemplating the issue of Debentures will find it to their advantage to communicate with

G. A. STIMSON & CO.

Investment Dealers

24 and 26 King St. W.

TORONTO

**THE DELANO-OSBORN
ENGINEERING CO., LIMITED**

MANNING CHAMBERS TORONTO

**CONSULTING, CIVIL, MECHANICAL AND
ELECTRICAL ENGINEERS.**

ALWAYS IN STOCK

PIG LEAD, PIG TIN AND SOLDER

Syracuse Smelting Works, Montreal, P.Q.

Notice to Contractors.

*The Niagara Falls Machine & Foundry Co., Limited,
Niagara Falls, Ont.,*

are making a specialty of improved
HOISTING AND BUILDING ENGINES.
Write for Prices.

**THE CANADIAN INSPECTION
COMPANY, LIMITED**

Main Office and Laboratories:
146 St. James Street, MONTREAL

SPECIALTIES: Inspection of RAILS and all material for BRIDGES, BUILDINGS, and other structures, cast iron pipe, wood and steel railroad cars.

MANUFACTURE AND ERECTION.
Expert examination and reports, chemical analyses and physical tests of all kinds.
Cement Testing.

**PILE DRIVING**

and Foundation Work.

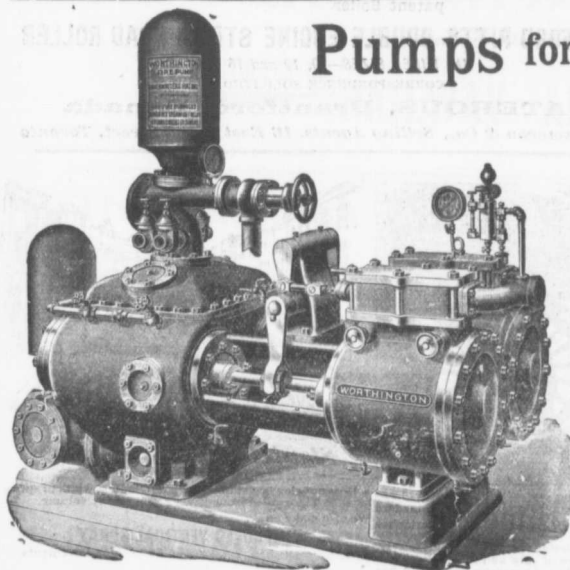
By 5-ton Automatic Steam Pile Hammer, Water Jet or Drop Hammers, Dock Building, Submarine Work and Dredging.

BUILDING MOVER AND WRECKER

General Contracting.

JNO. E. RUSSELL, - Toronto

908 Queen St. E. - Phone M. 207.

**Pumps for Waterworks**

**Waterworks Systems
Installed**

*Steam, Hydraulic, Electric,
Gasoline, Air Lift and
Automatic Rams.*

**Steam Boilers and
Filters**

Write for Prices and Particulars

The John McDougall

CALEDONIAN IRON WORKS CO., LIMITED

MONTREAL, P.Q.