

MESOZOIC

JURASSIC or CRETACEOUS

Large thin or medium bedded sandstones and shales containing upper coal horizons

Lahavie series (lower coal horizons) conglomerates, greywackes, sandstones, shales, etc.

1

Yendohktilid division (shales generally reddish to black)

2

Brookton limestone

3

Montague group (shale, cherty quartzite, slate)

A-C

Rainier Mountain group (gneiss schist)

Symbols

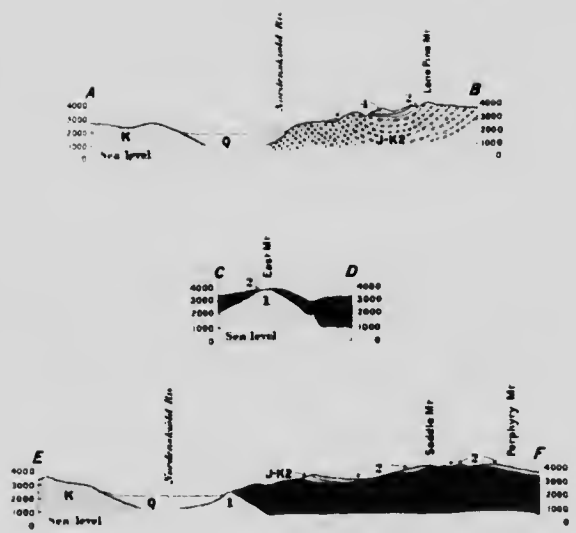
Geological boundary defined

Geological boundary assumed

Coal outcrop

65°E

65°E



Geological sections along the lines AB, CD, EF.

136°20'

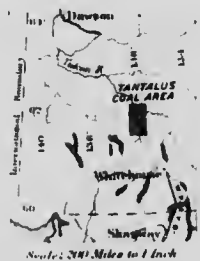
136°10' Longitude West from Greenwich

CD Several topographies and Chart Draughtsman. 1:10 by Wm. Draughtsman

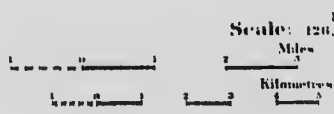
MAP 10A

# TANTALUS COAL AREA

YUKON TERRITORY



Scale: 200 Miles to 1 inch



2 MILES TO 1 INCH