

Nitecap

By ROSS A. LIBBEY

Before I plunge into this week's alcoholic adventure, here are the rules and regulations to *The Nitecap Contest*.

- 1) All entries must be relatively original and/or moderately inventive.
- 2) All entries must be submitted before midnight, Tuesday Feb. 19th, 80
- 3) All entries must be taste-tested prior to submitting -i.e. If you don't like it I don't want to risk it.
- 4) All entries must be accompanied by a name, address and phone number.
- 5) All readers of 'Da Bruns' are eligible-students or scholars, tipplers and teetotalers alike. Anyone who carries an interest in imbibing continually or perennially.
- 6) Entries must be submitted to: Ross A. Libbey, c/o The Brunswickan, Rm. 35, The SUB.
- 7) Prize will be entrance for two to the College Hill Social Club and a free drink each plus a special bonus gift thrown in by the CHSR.

sponsored by
The Brunswickan and the College Hill Social Club
with many thanks to Jean Baker.

And now for this weeks feature. Whereas we have recently come to the attention of the great Skier in the sky and have received the snow we so justly deserve-this weeks creative concoction is for all you slope slurpers.

After a long hard day of risking life and limb in the bitter wind and cold on the many majestic peaks surrounding the Elm City, this is the one perfect way to thaw out those frostbitten fingers and toes (and other various extremities.)

#####

Hot Rum Toddy

To be made in heavy coffee mug

- Brown sugar OR Honey OR Maple Syrup to cover bottom
- 1 oz. dark rum
- Fill with boiling water
- 3-4 whole cloves
- 1/2 tsp. butter
- Garnish with a cinnamon stick

THE SF COLUMN

By KEVIN BACKS

For this my first article, I will be exploring the universe according to "Star Trek". (Pay attention 'cause there's going to be a quiz)

It all began, relatively quietly, by present standards, on September eighth, 1966. The first episode written by George Clayton Johnson, was entitled "The Man Trap". The program contained a rather large part for Dr. McCoy (portrayed by DeForest Kelley). It also used my favourite type of movie monster, one that looks just like a beautiful woman. In this case she (it) bears a rather striking resemblance to one of Dr. McCoy's ex-girlfriends (in human form, Jeanny Bal-as monster, Francine Pryne.)

The final effect is far from pretty, since the alien extracts all salt from human bodies. The good doctor is left to discover this before the Enterprise and all aboard her are doomed.

This episode was followed by seventy-seven more, one hour (actually fifty-three minutes) shows. After the second season, the network was ready to mothball the Enterprise and her crew. However, viewers, extremely distraught over the demise of Star Trek wrote so many letters that NBC felt it to be in their best interests to renew the show for another twenty-six weeks.

Since 1969, the last year of production, the series has been syndicated to more than 150 stations in North America. It is also seen in more than 50 foreign countries.

In 1972 a series of 22 animated episodes began airing. These went into syndication in October of 76.

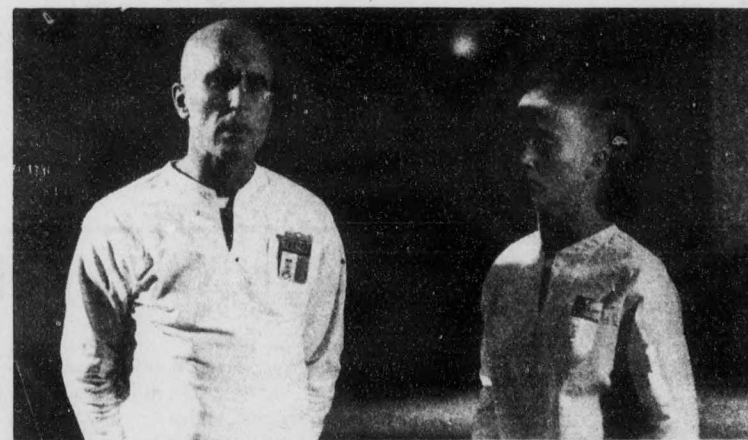
The final "live" episode, "Turnabout Intruder" was telecast on the third of June in the final year of the "Sexy Sixties". The teleplay, written by Arthur Singer (from a story by the show's creator Gene Roddenberry) centers around a mind switch between Captain Kirk (William Shatner) and Doctor Janice Lester (Sandra Smith).

Shatner in one of his finest acting efforts, portrays a female mind in a male body. The plot has been criticised for being rather anti-feminist, due the author's characterization. We know Kirk has a female mind, because of the emotional and vindictive nature he displays.

Finally during the Christmas season of 1979 it came back to life. "Star Trek, The Motion Picture" was released.

Now for the quiz (actually it isn't about ST at all) The questions involve the motion picture "THX-1138".

1. Who composed the films score?
2. Who played the title role?
3. Where are religious services held?
4. Why does the pursuit of THX-1138 come to a halt?
5. Who was the executive producer?
6. When was the film released?
- 7 Name the screenwriters.
8. Why does THX-1138 get into trouble with the authorities?
9. Who played the two Crome Robots?
10. How are people in this society identified?



CHSR 700

By JOHN GEARY

Apologies for the error about on-air hours in last weeks column! The hours are from 7-9 a.m. and 12 noon to midnight on weekdays only. On weekends we're on from 9 a.m. to 12 midnight straight through. Also you can listen to us straight through from Saturday night until Sunday morning now, as the great CHSR all-nighters have begun.

Another new contest from CHSR all this week and right up until Feb. 12 CHSR will be presenting "The CHSR Record-Giveaway"; everyday four albums will be given away to four lucky callers so stay tuned to 700!

Further apologies dept: The BBC Profile tapes got mixed up last week and listeners heard part of the WHO profile instead of Part 2 of the Rolling Stones. Fear not, Stones fans! Mick and the boys will be back this week on Profile.

With the federal election looming ever closer on the horizon, CHSR will be providing interviews and up-to-date coverage; there has already been an interview with Dan Hurley on Roundup and interviews with Bob Howie and Phil Booker are forthcoming. [Providing our news department can track down Mr. Booker that is!]

A reminder to our members, [and any other interested parties]: there will be a General Meeting on Tuesday, Feb. 5, at 7:30 in Room 26 of the SUB. A special presentation is being given and ALL members should attend.

PICTURE QUIZ

In the photo we see THX-1138 and the character played by Maggie McOmie. Who does Ms. McOmie portray?

STUMPER QUESTION

In the movie, "This Island Earth" Exeter is an emissary from what planet?

Answers on page 22

THE BYRDS

I DISCOVERED A BRILLIANT WAY TO CONSERVE ENERGY AND REDECORATE OUR HOUSE. I BURNT OUR FURNITURE.



RIVERVIEW ARMS

Appearing this week

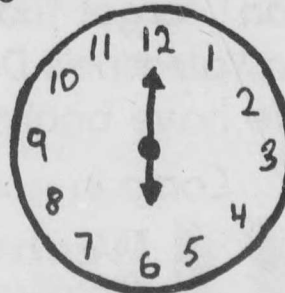
Rox

Sat Matinee

Coming next week from Montreal

Traxis

Remember the ARMS is Hopping LONG before six.



MAGIC FOREST MUSIC STORE

\$ 2.99

\$ 3.99

\$ 4.99

ALBUM SALE

100's of L. P.'s on Sale

399 King St