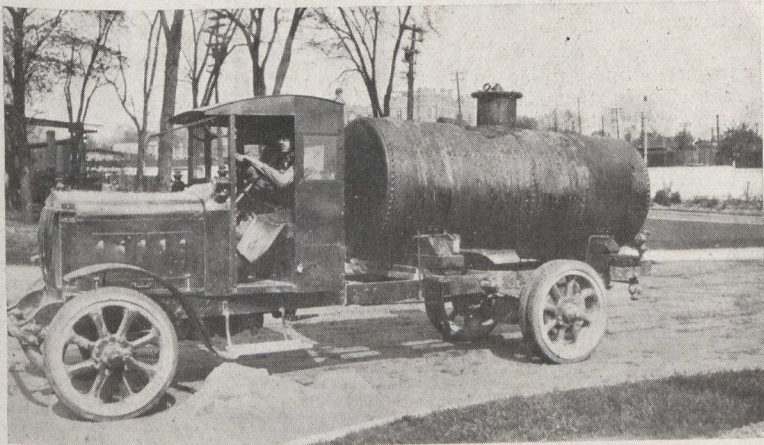


VETERAN TRUCKS

BUILT IN CANADA

2¹/₂ TON (LONG, MEDIUM OR SHORT WHEELBASE)



Immediate Delivery from Stock

Real Service

Overload demonstration carried out by the Ottawa Improvement Commission using 2¹/₂ ton Veteran Truck Chassis and Cab.

Pay Load	6900 lbs.
Chassis and tank	7920 lbs.
Gross weight	14820 lbs.

The truck worked for two days under these conditions, and was then taken to the factory, taken down and all parts examined. This examination disclosed no signs of damage or strain.

Catalogue on Request.

Eastern Canada Motor Truck Co., Limited

HULL, QUE.

Mention the Forestry Journal for your identification.