

ty-eight to forty-six inches, bust measure. To make the basque for a lady of medium size, requires a yard and five-eighths of dress goods forty inches wide, and three-fourths of a yard of velvet twenty inches wide. Of one material, it needs three yards and three-eighths twenty-two inches wide, or two yards and three-fourths twenty-seven inches wide, or a yard and five-eighths forty-four inches wide, or a yard and a-half fifty inches wide. Price of pattern, 1s. 3d. or 30 cents.

## LADIES' BASQUE.

(For Illustrations see Page 331.)

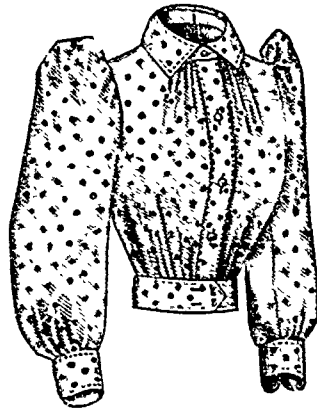
No. 4422.—French-gray camel's-hair is shown in this basque at figure No. 437 T in this DELINEATOR, braid bands forming the garniture.

In the present instance mixed wool goods of seasonable texture were chosen for the basque.

It extends to a uniform depth and is accurately adjusted by double bust darts, under-arm and side-back gores and a curving center seam, the lower outline is gracefully rounding, and the closing is made at the center of the front with buttons and button-holes. The coat sleeves are fashionably full at the top; they are arranged upon smooth linings, and each wrist is decorated with three rows of machine-stitching made diagonally across the upper sleeve-portion at deep cuff depth from the lower edge. At the neck is a stylishly high standing collar, the free edges of which are followed by two rows of machine-stitching; and three rows of stitching form a neat completion for the lower edge of the basque.

The mode will develop with equal satisfaction in silken, woollen or cotton goods. Bengaline, brocaded or plain silk, cloth, cheviot, camel's-hair, serge, etc., are especially well adapted to the fashion, and percale, French gingham and challis will also make up attractively. For garniture, braid or cord passementerie, Carrickmacross or ragged lace, gimp, galloon or velvet ribbon may be applied in any fanciful way preferred; or a plain tailor finish may be selected. Combinations of colors or materials are favored for a basque of this style, and the collar and sleeves will generally be of the combining fabric.

We have pattern No. 4422 in thirteen sizes for ladies from twenty-eight to forty-six inches, bust measure. For a lady of medium size, the basque requires three yards and a-fourth of material twenty-two inches wide, or two yards and three-fourths twenty-seven inches wide, or a yard and five-eighths forty-four inches wide, or a yard and a-half fifty inches wide. Price of pattern, 1s. 3d. or 30 cents.

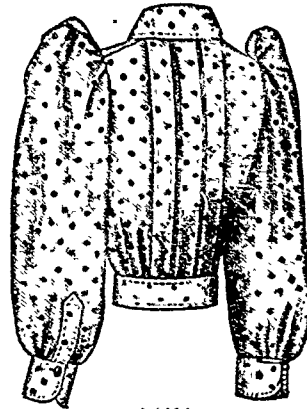


4451

Front View.



4451

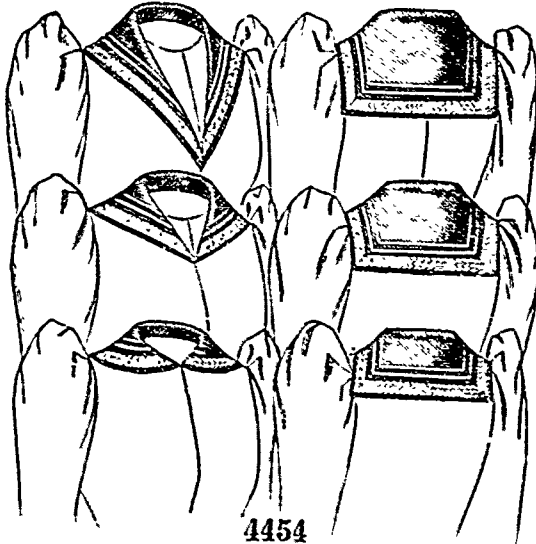


4451

Back View.

## LADIES' SHIRT-BLOUSE. (COPYRIGHT.)

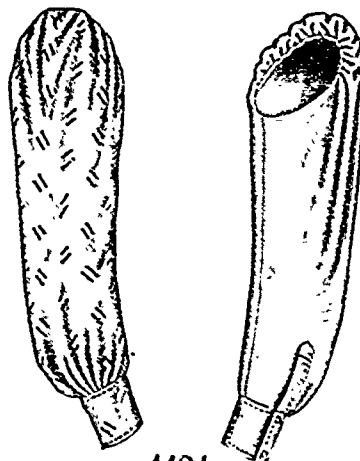
(For Descriptions see Page 334.)



4454

## LADIES' SAILOR COLLARS. (COPYRIGHT.)

(For Description see Page 334.)



4424

Upper Side.

Under Side.

## LADIES' SHIRT SLEEVE. (COPYRIGHT.)

(For Description see Page 334.)

## LADIES' RUSSIAN BLOUSE.

(For Illustrations see Page 332.)

No. 4346.—This pretty blouse is portrayed made of bright-red Surah and prettily trimmed with narrow velvet ribbon. The fronts and full seamless back are joined in shoulder and under-arm seams; the right front is widened to lap to the left shoulder seam, and the closing is made invisibly at the left side, the front edges of both fronts being finished with underfacings. The back is drawn by gathers at the neck, and the top of the right front is gathered at the center. The lower edge of the blouse is also gathered and is turned under deeply, and the fulness at the waist-line is collected at the back and in the right front in three rows of shirring, and in the left front in three shorter rows of shirring. The shirrings are tacked to a belt-stay arranged underneath, and the bottom of the blouse presents a puff effect. The blouse is encircled by a girdle, which is fitted by a seam at the center of the

front, where it widens from regulation belt depth to form decided points at its upper and lower edges, and the ends are closed at the left side. A lap that is pointed at its lower end is arranged upon the front edge of the right front and extends from the shoulder edge to the bust; a row of small velvet buttons is ornamentally placed at the center of the lap, and the edges are decorated with two rows of narrow velvet ribbon. The full shirt-sleeves are gathered at the top and bottom and are finished with deep cuffs, each of which is decorated in front of the seam with a row of buttons; and two rows of velvet ribbon are applied at the lower edge and continued along each side of the buttons. The girdle is trimmed along all its edges with two rows of ribbon, and at the neck is a high standing collar similarly decorated.

If a puff effect above the hips be undesirable, the skirt of the blouse may be allowed to hang its natural length below the girdle. Garments of this kind may be attractively developed in Dresden-blue, old-rose, tauréau-red, white or black India or China silk, Surah, faille or cashmere. Soutache braid in metallic colorings, grosgrain or velvet ribbon, feather-stitching, etc., will provide dainty decoration. A handsome blouse made up in this way, which may be appropriately worn with several skirts, is of dark-red Surah and black velvet, with a jabot of cream chiffon over the center.

We have pattern No. 4346 in thirteen sizes for ladies from twenty-eight to forty-six inches, bust measure. For a lady of medium size, the blouse needs five yards of goods twenty-two inches wide, or three yards and an-eighth thirty-six inches wide, or two yards and three-fourths forty-four inches wide. Price of pattern, 1s. 3d. or 30 cents.