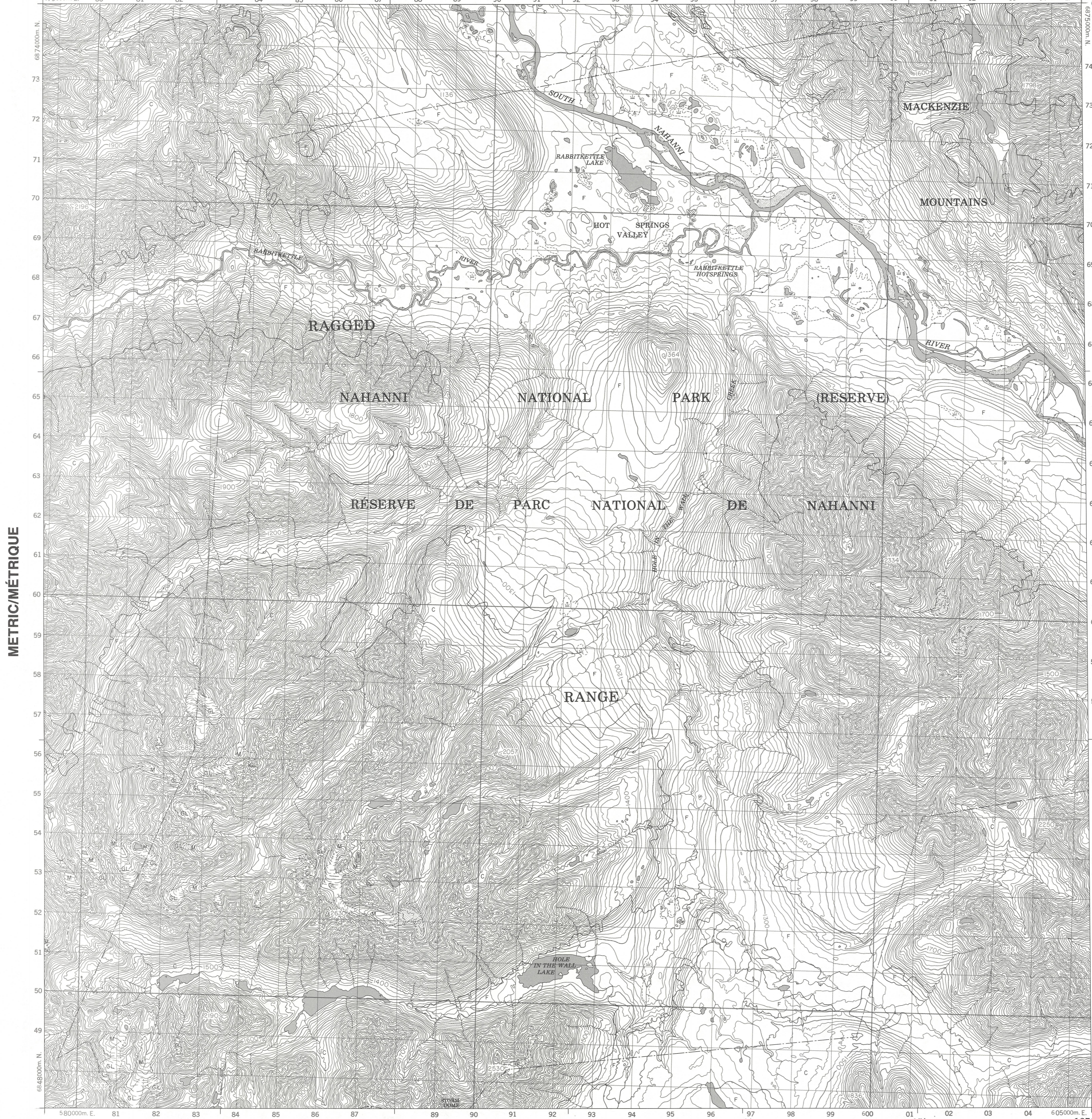


Military users, refer to this map as: MAP 95 E/14 CARTE 95 E/14 ÉDITION 1 MCE ÉDITION

HOLE IN THE WALL LAKE 95 E/14 ÉDITION 1 ÉDITION



LEGEND - LÉGENDE table with symbols and descriptions for various map features like roads, railways, and landmarks.

METRIC/MÉTRIQUE

METRIC/MÉTRIQUE

PHOTOGRAPHY PHOTOGRAPHIE, GRID ZONE DESIGNATION, and EXAMPLE OF METHOD USED sections.

Index to adjoining Maps of the National Topographic System table with grid coordinates.

PRODUCED BY THE SURVEYS AND MAPPING BRANCH, DEPARTMENT OF ENERGY, MINES AND RESOURCES. OTTAWA, PUBLISHED IN 1986.

HOLE IN THE WALL LAKE DISTRICT OF MACKENZIE, NORTHWEST TERRITORIES. Scale 1:50 000 Échelle.

ALTITUDES EN MÈTRES ÉQUIDISTANCE DE COURBES... 20 MÈTRES. ÉTABLI PAR LA DIRECTION DES LÈVES ET DE LA CARTOGRAPHIE.

CONVERSION SCALE FOR ELEVATIONS, HOLE IN THE WALL LAKE 95 E/14 ÉDITION 1 ÉDITION, Energy, Mines and Resources Canada logo.