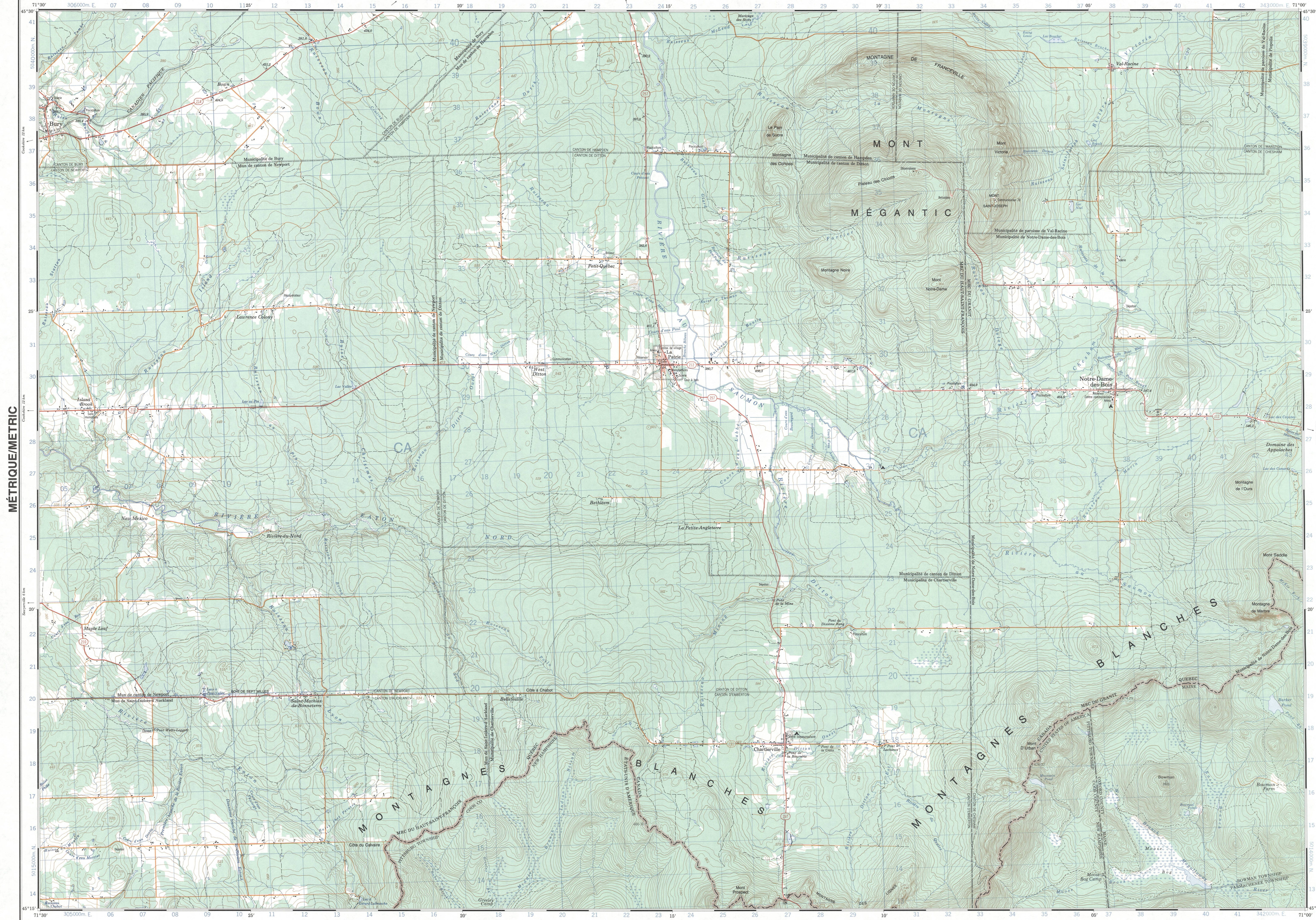


MÉTRIQUE/METRIC

MÉTRIQUE/METRIC



Reference of this map: Série A 761, Série pour usage militaire, Carte 21 E/6, MAP Military users, refer to this map as: ÉDITION 6 MCE, EDITION 6



Utilisez le diagramme ou pour obtenir les valeurs numériques DÉSIGNATION DE LA ZONE DU QUADRILLAGE APPROXIMATIVE DE 20 000 m DE CÔTÉ. IDENTIFICATION DU CADRE DE 100 000 m DE CÔTÉ. 19T CA

Use diagram only to obtain numerical values APPROXIMATELY FROM SECTION 199 FOR CENTRE OF MAP. IDENTIFICATION OF GRID ZONE DESIGNATION. 19T CA

QUADRILLAGE UNIVERSEL, TRANSVERSE DE MERCATOR DE MILLE MÈTRES ZONE 19 ONE THOUSAND METRE UNIVERSAL TRANSVERSE MERCATOR GRID

DESIGNATION DE LA ZONE DU QUADRILLAGE APPROXIMATIVE DE 20 000 m DE CÔTÉ. IDENTIFICATION DU CADRE DE 100 000 m DE CÔTÉ. 19T CA

Use diagram only to obtain numerical values APPROXIMATELY FROM SECTION 199 FOR CENTRE OF MAP. IDENTIFICATION OF GRID ZONE DESIGNATION. 19T CA

QUADRILLAGE UNIVERSEL, TRANSVERSE DE MERCATOR DE MILLE MÈTRES ZONE 19 ONE THOUSAND METRE UNIVERSAL TRANSVERSE MERCATOR GRID

DESIGNATION DE LA ZONE DU QUADRILLAGE APPROXIMATIVE DE 20 000 m DE CÔTÉ. IDENTIFICATION DU CADRE DE 100 000 m DE CÔTÉ. 19T CA

Use diagram only to obtain numerical values APPROXIMATELY FROM SECTION 199 FOR CENTRE OF MAP. IDENTIFICATION OF GRID ZONE DESIGNATION. 19T CA

QUADRILLAGE UNIVERSEL, TRANSVERSE DE MERCATOR DE MILLE MÈTRES ZONE 19 ONE THOUSAND METRE UNIVERSAL TRANSVERSE MERCATOR GRID

DESIGNATION DE LA ZONE DU QUADRILLAGE APPROXIMATIVE DE 20 000 m DE CÔTÉ. IDENTIFICATION DU CADRE DE 100 000 m DE CÔTÉ. 19T CA

Use diagram only to obtain numerical values APPROXIMATELY FROM SECTION 199 FOR CENTRE OF MAP. IDENTIFICATION OF GRID ZONE DESIGNATION. 19T CA

QUADRILLAGE UNIVERSEL, TRANSVERSE DE MERCATOR DE MILLE MÈTRES ZONE 19 ONE THOUSAND METRE UNIVERSAL TRANSVERSE MERCATOR GRID

DESIGNATION DE LA ZONE DU QUADRILLAGE APPROXIMATIVE DE 20 000 m DE CÔTÉ. IDENTIFICATION DU CADRE DE 100 000 m DE CÔTÉ. 19T CA

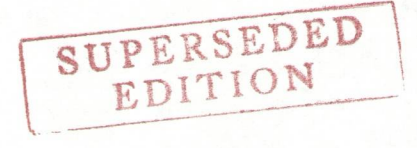
Use diagram only to obtain numerical values APPROXIMATELY FROM SECTION 199 FOR CENTRE OF MAP. IDENTIFICATION OF GRID ZONE DESIGNATION. 19T CA

QUADRILLAGE UNIVERSEL, TRANSVERSE DE MERCATOR DE MILLE MÈTRES ZONE 19 ONE THOUSAND METRE UNIVERSAL TRANSVERSE MERCATOR GRID

DESIGNATION DE LA ZONE DU QUADRILLAGE APPROXIMATIVE DE 20 000 m DE CÔTÉ. IDENTIFICATION DU CADRE DE 100 000 m DE CÔTÉ. 19T CA

Use diagram only to obtain numerical values APPROXIMATELY FROM SECTION 199 FOR CENTRE OF MAP. IDENTIFICATION OF GRID ZONE DESIGNATION. 19T CA

Map footer containing scale bars (1:50,000), coordinate systems (NAD 83, NAD 49), and publisher information (Canada Centre for Mapping, 1990).



MAP G34.01 C22.2 s50 C36 21 E/6 1990